

2021

FREE

GREAT OYSTER BAY Community News

06th July 2021

Issue 27.2021



“This support means we have been able to give grants to the Anglican Church, Orford and Triabunna schools, Ambulance Tasmania volunteers, fire brigades at Triabunna and Buckland and the Suicide Prevention Network and many more essential community groups.”

By Lana Best

FERGUSON AVOIDING IMPORTANT QUESTIONS ON COMPENSATION FOR EAST COAST RESIDENTS

The Gutwein Government is failing in its duty to provide compensation to East Coast residents affected by the Tasman Highway closure.

Labor Member for Lyons Jen Butler said while the government’s support for businesses affected by the road closure near Orford was welcomed, Infrastructure Minister Michael Ferguson was avoiding the important need for others to be compensated for the widespread inconvenience. “Michael Ferguson was asked a direct question in the State Parliament today on the important need for residents to be compensated and he point blank refused to answer,” Ms Butler said.

“Ordinary families and mums and dads have been badly affected by the necessity to make the Tasman Highway safe but they have been left high and dry by this government.

“But Michael Ferguson has no answers. “I urge Mr Ferguson to listen to those residents who have lost incomes by not being able to get to their jobs and listen to those residents whose lives have been interrupted.

“I urge him to tell them what compensation is available and how they can go about receiving it.”

*Jen Butler MP
Labor Member for Lyons*

GRANT POPS UP FOR DENTAL EQUIPMENT

We all know there’s power in the printed word, but how can books help Tasmanians with tooth troubles get the care they need? Books that find their way to Triabunna’s popular Pop Up Book Stall (PUBS) are not only satisfying avid readers, the money raised from their sale has resulted in a grant of \$6500 to the Royal Flying Doctor Service Tasmania’s mobile dental clinic at May Shaw Health Centre, Swansea.

RFDS Tasmania Mobile Dental Care Program manager Nicole Henty said that the funds will be used to purchase an endodontic motor and handpiece which will allow the speed and accuracy of root canal procedures to improve, and in turn more patients will be able to access the free dental service.

“It’s amazing how this generous donation from a committed community group like PUBS can make such a big difference in so many ways”, Nicole said.

“Not only is PUBS a mecca for book lovers, the money it has raised will help the RFDS significantly enhance the dental services that we provide to the Glamorgan-Spring Bay community.”

The RFDS also provides physical and mental health care programs in the municipality.

PUBS is run by a team of 22 volunteers out of the Old Council Chambers in Vicory St every Wednesday, Friday and Sunday 11am-2.30pm.

The popular stall is superbly organized and offers great variety with more than 4000 books for sale for as little as 50 cents. PUBS manager Judy Mollineaux said that the grant to RFDS was the biggest single contribution it had made so far and brings the total grants gifted to community groups to more than \$60,000.

She recalled the time when she and fellow book tragic Richard Wyllie and Jane Pollard came up with the concept in 2015 - they were thrilled to raise \$100 from their first stall.

“The book stall popped up in various locations until February last year when we secured the permanent location in the old hall attached to the former council chambers,” Judy said.

“This has made a huge difference and people are coming from as far away as Launceston and Huonville and word is really getting around.

OPENING TIMES**SWANSEA
ONLINE
ACCESS CENTRE Inc.
&
GREAT OYSTER BAY
COMMUNITY NEWS**

Franklin St. Swansea (at library)
Phone: 0424 425 908

OPEN 10–3pm MON–FRI
CLOSED WEEKENDS
+ PUBLIC HOLIDAYS
social distancing required.

**SWANSEA
LIBRARY**

Franklin St. Swansea
(at Primary School)
Phone: 6257 8607

OPEN TUESDAY & THURSDAY
9.30 am–12.30pm 1.15pm–4.15pm
CLOSED ALL OTHER DAYS
+ PUBLIC HOLIDAYS

**BICHENO
LIBRARY**

78 Burgess Street (at Town Hall)
Phone: 6387 5609

OPEN MON/WED/FRI 2pm–4pm
TUES/THURS 10am–2pm
SAT 10am–Noon
CLOSED ALL OTHER DAYS
PUBLIC HOLIDAYS

OPENING TIMES**GLAMORGAN -
SPRING BAY
COUNCIL**

9 Melbourne Street, Triabunna
operating normal hours of operation,
Monday to Friday
9.00am – 4.30pm

BUT with some changes, go to
<https://gsbc.tas.gov.au/services-facilities/public-notice/> for details

**WASTE MANAGEMENT
CENTRES (WMC)**

WINTER OPENING TIMES
May 2021 - end October 2021

BICHENO WMC – 2km south of the town, on the Tasman Hwy.

COLES BAY WMC – turn off Coles Bay Rd, about 5kms from the township.

ORFORD WMC – Tasman Hwy, just north of Raspins Beach.

SWANSEA WMC – top of Maria St.

All four WMCs are open from
Monday, Wednesday & Friday
2:30pm-4:30pm

Closed Saturdays

Sundays 10.00am-2.00pm
Open all Public Holidays except
Christmas Day & Good Friday
- normal times apply

OPENING TIMES**All Saints Op Shop**

Franklin St. Swansea
Trading hours:

Monday — Friday 10 am—2 pm
Saturday 10 am — 12 noon
(subject to staff availability)

Donations most welcome
Gloria Willis interim manager
All Saints Op Shop for Anglican
Parish of East Coast

Pop Up Book Stall

Open: Wednesday to Sunday
11am -2.30pm plus Public Holidays.
Community Hall (former Council Chambers Building) Vicary St. Triabunna.
All proceeds are donated to community organisations and activities.
Enquiries Judy 62571262/0438571262
Beth 0407571181
www.facebook.com/PopUpBookStall
email popupbookstall@hotmail.com

**SWANSEA
GENERAL PRACTICE**

May Shaw, Wellington St. Swansea
Open Monday—Friday
9.00am-1.00pm 2.00pm-5.00pm
For an appointment phone
6257 8205

East Coast Heritage Museum

22 Franklin Street, Swansea
Open Mon to Fri 10am–4pm
Closed Good Friday & Christmas Day
www.eastcoastheritage.org.au
(We are Covid Compliant,
be COVID-19 Safe)

GREAT OYSTER BAY COMMUNITY NEWS TEAM

The current Swansea Online Access Centre volunteers and our coordinator Bill Fry

Advertising, Stories & Copy Deadline: STRICTLY 12 NOON FRIDAY

The Great Oyster Bay Community News is printed on Tuesdays.

Please ensure your ads are in early to meet your advertising deadline dates.

Advertisements costing \$20 or less **MUST BE PAID IN CASH** at the Swansea Online Centre prior to publication

Please provide adverts in PDF, JPG or Word format. Articles, letters and photographs of events are most welcome!

Phone: 0424 425 908 Post: PO Box 308 Swansea 7190 Email: gobcnews@gmail.com

Website: www.gobcnews.weebly.com

Facebook: www.facebook.com/greatoysterbaycommunitynews

Printed at the Swansea Online Access Centre, Swansea, Tasmania

Opening Hours: Monday to Friday 10am–3pm (Unless otherwise noted)

Closed Sat & Sun + Public Holidays

Franklin Street, Swansea (next to the Library).

LETTERS to THE GOBCNews TEAM (editor)

Please address your letters to the editorial team and please keep it under 200 words, and email to gobcnews@gmail.com.

Letters to the editor must comply with our editorial policy, see disclaimer below. **Un-authored letters will not be published.**

THE GREAT OYSTER BAY COMMUNITY NEWS is a weekly newsletter containing articles of interest, community notices and advertising relevant to the Glamorgan Spring Bay Municipality. Advertising revenue is used to finance the printing of 600+ Newsletters, 50 weeks of the year. The Great Oyster Bay Community News is distributed to all major towns of the municipality weekly, free of charge for our readers.

The GOBCNews team

Disclaimer: The Great Oyster Bay Community News reserves the right to print any material which is designed to benefit or be of interest to the local community. Consequently, all views or opinions expressed in material published are solely those of the writer of that material and do not necessarily reflect the view or opinions of any persons associated with Great Oyster Bay. Community News, the Swansea Online Access Centre or Libraries Tasmania. The Great Oyster Bay Community News also reserves the right to edit or refuse to publish any material, that also may be deemed damaging, misleading or detrimental to our organisation or community or any person. Please refer to our Editorial and Advertising policies which are located on our website: www.gobcnews.weebly.com

OPENING TIMES**Swansea Community & Men's Shed**

Opening Hours:

Tuesday 10am to early afternoon
(men & women's group)Wednesday 10am to 1pm
(men's group)Wednesday afternoons
(school pupils)Thursday 10am to early afternoon
(men's group)Friday 10am to early afternoon
(women's group)

Contact Colin Stevenson 0400 030 746

Swansea Re-Use Shoppe

Opening hours:

Saturday - Sunday, Tuesday - Thursday
10am to 3pm**CLOSED MONDAY & FRIDAY**

Contact Tracey Kean 0407 639 022

Swansea Community Room

with kitchen facilities. Available for hire

Contact Heather Groombridge
0416 200 172**CHURCH NOTICES****St. Andrews****Uniting Church Swansea**will be holding services on the 1st &
3rd Sundays of each month at 10m.

Everyone is invited to attend.

All Welcome

Swansea House Church

Every Thursday

6.30pm—8.30pm

9 Bridge St.

Swansea



Lifts available

Enquiries

Steven & Linda

(Salvos)

0458 959 820

Laurie & Sherry

0467 972 578

East Coast
ANGLICAN
PARISH**East
Coast
Anglican**Please join us for church every
Sunday (usually 10am or 3pm).
See details on the website or call**Reverend Ben Allen**

0407 242 522

www.eastcoastanglican.church

10 Noyes Street, Swansea

&

1 Franklin Street, Triabunna

CLUBS & GROUPS**Swansea Branch CWA** meets2nd Wednesday of the month. New
members always welcome. Craft days
alternate months.

Contact 0402 043 621 for details

Spring Bay Walkers Every

Thursday morning, contact

Peter Hutememier 6257 7506.

See programme

[www.triabunnavillage.com.au/
springbay-walkers](http://www.triabunnavillage.com.au/springbay-walkers)**Swansea Exercise Group.**

held at Swansea Golf Club

Mondays 8:45 for 9 am. (currently full)

Followed by **Qigong** at 10 am

Enquiries:

0429 178 076 / 0448 649 765

(re Exercise Group) or

0448 649 765 (re Qigong)

Mahjong 1.30 pm Mondays

Swansea Golf Club.

Contact Lyn Lyne 0438 578 208

Cranbrook Craft Group Every

Wednesday 10.30 am at

Cranbrook Hall. Cranbrook.

Contact Edith 0409 216 793

Swansea Tennis Club is open to

all members and available for hire.

Ladies day Mondays, playing 11am.

Contact

Kathy Dance 0439 732 496.

All new members welcome.

Swansea Men's Probus Clubmeeting start 10am every 2nd Tuesday
of the month at Swansea Golf Club with
Social Distancing**Glamorgan Spring Bay
Historical Society Inc.**

Are you interested in local History?

Then consider joining the Historical

Society. Currently our office is open

Tuesdays 10am to 4pm

22 Franklin Street, Swansea

<https://glamorganhistory.org.au/>

Phone: 03 6256 5077

**East Coast
Community
Youth Choir**is open to boys and girls
aged 9-16. Meets in Orford.

For details contact

Gaye 0422 961 678**CLUBS & GROUPS****MEALS ON WHEELS
SWANSEA ROSTER**

Date	2021	Name
Wed	07 Jul	N Hickey
Thur	08 Jul	S Fletcher
Fri	09 Jul	D & C Busittil
Mon	12 Jul	T Gray
Tues	13 Jul	P & D Cardno

Tap Dancing Classes

Every second Saturday at the

Swansea Courthouse from 4pm.

Starting from Sat 10th July.

Cost \$3. Shoes and drink provided.

Janelle Hall

0437 264 332

**Swansea & District
Garden Club**Meetings held 2nd Thurs each month
2pm at All Saints Church Hall. New
members welcome.

Ph 0417 977 118 or 0402 043 621

SwanseaDistrictGardenClub

@gmail.com

**Dolphin Sands Ratepayers
Assoc. (DSRA)**Email: dsra.7190@gmail.comWebsite: dsra.org.au

Mail: PO Box 133, Swansea, 7190

Swansea Bowls Club

Introducing

Winter Indoor BowlsCommencing **Friday 16th July**

Roll up at 2.00 pm

All Welcome, come and join the fun.

Contact: **Mick 0417 064 571 or****Judi 0449 596 175** for details**GREAT OYSTER BAY NEWSLETTER ADVERT PRICES**

SIZE	1 Advert for 1 Issue	
	Clubs & Personal	Business
1 (6x3cm)	\$6	\$7.50
2 (6x6cm)	\$12	\$15
3 (6x9cm)	\$18	\$22
4 (6x12cm)	\$24	\$30
1/4 Page	\$36	\$45
1/3 Page	\$48	\$62
1/2 Page	\$66	\$86
Full Page	\$102	\$112

IMPORTANT

Please keep all your community notices up to date by contacting us on

Phone: 0424 425 908 or Email: gobcnews@gmail.com

MISCELLANEOUS

Rescue, rehabilitation and release of native wildlife. Also treating wombats with mange in our Municipality on behalf of Wombat Rescue.

Contact **Marcia 0448714419**

THE VILLAGE

20 Melbourne Street, Triabunna

Activities getting back to Covid normality. See web page and Facebook page for full list of activities.

<http://triabunnavillage.com.au/>
<https://www.facebook.com/VillageTriabunna/>

Military Compensation & Rehabilitation Advocacy Services

are now available at the Swansea RSL for ex-service, current serving and family members of the Australian Defence Forces. Contact **Steven Kenny 0438 060 047**

YOUR NOTICE HERE

COMMUNITY NOTICES**WANTED VOLUNTEERS**

The Swansea Online Access Centre requires a few more dedicated **volunteers** to help in the daily running of the Centre. Current shifts are 10am-1pm & 1pm-3pm Monday to Friday. Training will be provided. SOAC is an approved voluntary work organisation for Centrelink's mutual obligation requirements. SOAC also requires additional committed people to become **committee members** and help with the decision making of the centre. Meetings are quarterly.

For further details contact SOAC coordinator Bill Fry or the Secretary Rob Gaspari at the centre

Email address:

gobcnews@gmail.com

Phone number:

0424 425 908

COMMUNITY NOTICES**PFIZER COVID VACCINATIONS SWANSEA GENERAL PRACTICE**

PATIENTS OF THE SWANSEA GENERAL PRACTICE AGED BETWEEN 18 – 59 YEARS ARE NOW WELCOME TO CONTACT US

TO BOOK FOR A PFIZER VACCINATION.

THE CLINIC WILL BE ON:

SUNDAY THE 11TH JULY

PLEASE BOOK AS SOON AS POSSIBLE.

PH: 6257 8205

THE GREAT OYSTER BAY COMMUNITY NEWS ANNUAL GIVING PROGRAM IS OPEN FOR 2021.

The Great Oyster Bay Community News is a weekly newsletter which contains items of interest for the Glamorgan-Spring Bay Council area and uses its advertising revenues to finance the printing of the newsletter 50 weeks of the year.

The Great Oyster Bay Community News also uses these revenues to distribute small grants to needy organisations from the Glamorgan-Spring Bay municipality. These small grants are strictly for not-for-profit organisations and are designed to assist these organisations in the purchase of goods and/or services that will benefit the Glamorgan-Spring Bay community.

The grants are normally distributed once a year and applicants are voted for by the SOAC Committee via the application form which is available from the Swansea Online Access Centre or downloaded from the web site:

<https://gobcnews.weebly.com/annual-giving-program.html>

Applications close Friday 13th August 2021

Note conditions apply, see form for details.

Robert j Gaspari (Secretary)

COLOUR ISSUES 2021

Issue 01 January 04

Issue 14 April 06

Issue 27 July 06

Issue 40 October 05

Issue 50 December 14

IMPORTANT

Please keep all your community notices up to date by contacting us at

Phone: 0424 425 908 or

Email: gobcnews@gmail.com

COMMUNITY NOTICES**SWANSEA HERITAGE FESTIVAL 5th NOVEMBER 2021**

The Swansea Heritage Festival is now only 4 months away. Please consider your business or community organisation joining the festivities. Here are some suggestions: markets, busking, spit roast, BBQ, food and refreshment stalls, games for children, dress up in old time costumes, performance (play), musical entertainment etc.

Already organised are: Banners throughout the town, Indigenous exhibition, Amos family exhibition, launch of 2nd edition of Houses & Estates of Old Glamorgan and a recipe book (from Glamorgan's past), walking tours of Swansea, visit to historic houses.

The festival will be run in conjunction with the 'Amos Family Reunion' being held at Cranbrook.

Dearne Smith and Maureen Martin Ferris are happy to chat with you or visit your group to discuss your plans. Phone Maureen 6256 5066 or email Dearne at dearneys@msn.com.

LETTERS TO THE EDITORIAL TEAM

Dear Editor,

GSBC - THE RATES SAGA JUST GOT A WHOLE LOT WORSE!

I wrote last week concerning the announcements by GSBC regarding rates increases. Thank you for publishing my previous letter. Since then, I have had communications with the Mayor, and the General Manager, about the rates for our property in Swansea.

In response to my queries, I this morning received an e-mail from the General Manager, in which I was advised as follows:-

"Your property at XXXXXXXXXXXX has an adj CV of \$xxxxxx and an adj AAV of \$xxxxx. This means that the General Rates component for the next year will go to \$1,608, an increase of \$594."

That is an increase of \$594, an increase in that component of my rates of 58.5%. Never mind 15%, or 12 - 58.5%!!!!!!! I strongly urge other residents to check their rate notices very closely which should arrive in the next week or so. This is a LOT more than a Council on rate steroids. This Council is way, way out of control if it thinks it can just "willy nilly" apply rate increases like this!

I also urge other ratepayers to write to the Minister for Local Government protesting this outrageous increase.

Yours sincerely,

John Gault.



If you encounter potential hazards on these roads, please report them to the State Roads 24/7 hotline on 1300 139 933.



Tasman Highway closure near Orford

Latest update - Friday 2 July

Earthmoving crews will continue to work over the weekend with the goal of removing rock debris from the Tasman Highway at Paradise Gorge next week.

Work will then start to repair the Highway surface ahead of the planned re-opening to traffic in mid-July.

Good progress has been made in clearing about 2,000 tonnes of rocks and debris brought down from the rock face which posed a safety risk to road users.

Earth-moving crews have cleared the protective gravel cushion from about 70 me-

tres of the highway and are starting to remove the main pile of rocks dislodged from the rockface, as well as the remaining gravel.

In promising news, damage to the section of highway cleared so far appears to be limited to the surface of the road without affecting the road base. However, the full extent of repairs required will not be known until the road has been completely cleared of the heavier rocks, and a full assessment done.

Wielangta Road received a full grading this week and we will continue to monitor Wielangta Road and Lake Leake Road daily and make repairs as required.

Road users are reminded to drive to the conditions and comply with the speed limits for everyone's safety.

KINGS
FINE ART GALLERY & TEA ROOM

22 Cambria

CLOSED UNTIL SEPTEMBER

Drive
Dolphin Sands

0467 972 578

“
I'm getting the COVID vaccine because I want to keep myself, my family and my mob protected.”

WHY I'M GETTING THE COVID-19 VACCINE

JODIE
MOTHER AND GRANDMOTHER

www.coronavirus.tas.gov.au/vaccine



FREE-RANGE PORK
 PIG-IN-A-BOX BUTCHERED,
 PACKAGED, DELIVERED
25KG HALF PIG \$330

CALL 0459 080 201 OR
 VISIT LONGNAMEFARM.COM.AU

FOR SALE

1992 HOLDEN APOLLO AUTO.

*Has 3 months rego
 2 New tyres—good
 Runabout car for around town
 239,705 Kms
 \$1,000 or Best Offer*

**Call Chris
 0400 117 112**

GARAGE SALE

SATURDAY 10 JULY 9.30AM

Unit 11

13 Bridge Street, Swansea.
 (opposite caravan park)
 Garden pots, furniture,
 home décor

Come & find a treasure

Terri 0407 943 966

ARNOL PROJECTS

❖ CONTAINER CABINS - OUR
 DESIGN OR YOURS



Dale Arnol - 0417 332 988

arnolprojects@bigpond.com

Phone/fax: 6257 8288

41 Maria Street, Swansea.

- Mobile welding
- Aluminium-Stainless Steel
- Structural & General Engineering
- Stainless Wire Handrails
- Building Decks & Sheds
- Trailer, Machinery Repairs
- Wood Heater Repairs
- Steel Sold Cut to Length

Qualified Trade Persons

NO JOB TOO BIG OR TOO

SMALL

ABN 74 648 177 056



THE INCOMETAX PROFESSIONALS

ITP will be visiting Swansea
 at Dove Cottage
 Swansea Cottages,
 Franklin Street, Swansea on

Fri 23rd & Saturday 24th July

Phone **63 449 433**

for an appointment

JAWS MAINTENANCE & SERVICES

- Home and Property Maintenance
- Landscaping
- Gardening
- Lawn Mowing and Brush Cutting
- Rubbish Removal
- Property Hazard Reduction/
 clearing

No job too big or too small....

Contact us today
 to make your
 home JAWSome!!



**Joshua Wickham
 0438 866 735**

ABN: 20 506 110 168
 SWANSEA

jawsmands@gmail.com

Find us on Facebook:

@JAWSMandS

COMMUNITY SERVICE POSTER - PLEASE DO NOT REMOVE

WE CAN HELP. with Reading Writing & Maths

26TEN
 Get the tools for life

CONFIDENTIAL

Help a Family Member, New Australian or a Friend
 This is a free service, privacy is guaranteed
ONE ON ONE support - we want to help!



FREE 1 on 1 support

1300 00 2610

Supported by Swansea Online Access Centre 03 6257 8806

Tasman Highway - Road Closure

The Department of State Growth has closed the Tasman Highway at Paradise Gorge, west of Orford, until mid-July in the interests of public safety.

The road closure impacts traffic in both directions, about 1.5km before you reach Orford when travelling from Hobart. Once closed, the road will not reopen until the rock has been removed, which is expected to be in mid-July.

Traffic to and from the East Coast will need to detour via Lake Leake Road. Detour signage will be installed at key locations.

While Wielangta Road is open and can be used, it is a gravel road and is not suitable for large volumes of traffic. Road users should drive to the conditions.

If local businesses affected by the closure have any questions or would like further information they are encouraged to contact Business Tasmania on 1800 440 026 or ask@business.tas.gov.au

To report a hazard on the state road network, or for information about the closure, contact 1300 139 933.



Tasmanian
 Government

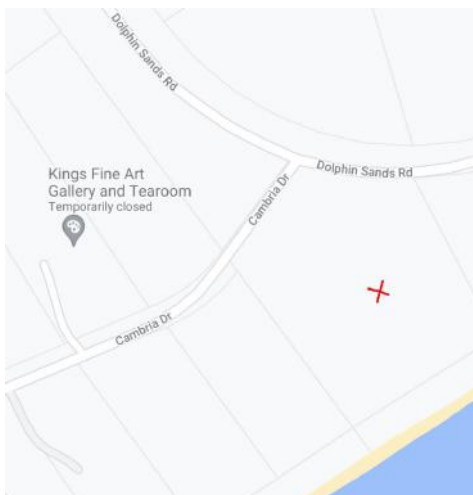
Department of State Growth



HEALTHY TASMANIA NEIGHBOUR DAY GRANT

Neighbour Day is Australia's annual celebration of community, encouraging people to connect with their neighbours. It is managed by Relationships Australia. The aim of Neighbour Day is to increase positive and sustainable social connections between people and communities throughout Australia. To celebrate Neighbour Day this year, the Dolphin Sands Ratepayers Association (DSRA) held a 'thank you' BBQ for our emergency service personnel. Melshell Oyster Shack generously hosted the event and Geoff and Marlene Jones made first-rate burgers.

Neighbour Day is supported by the Tasmanian Government's Department of Health. The DSRA were successful in applying for a grant from the Healthy Tasmania Fund for two picnic tables to assist community gatherings. After discussing possible locations with council, one picnic table has been installed near the Swan River boat ramp and the other next to the beach access track at the corner of Dolphin Sands Rd and Cambria Drive (see map). We hope community members enjoy using the picnic tables for get-togethers.



map showing the location of the picnic tables

By Robyn Moore DSRA

DOLPHIN SANDS PROTECTING OUR COMMUNITY FROM BUSHFIRE

The Commonwealth Government's Communities Environment Program supports small scale, community-led environment projects that address local environmental priorities. Thanks to a grant from this pro-

gram, through Brian Mitchell MP's office, the Dolphin Sands Ratepayers Association has been able to complete another round of coastal wattle removal.

Coastal wattle was aerial seeded on the peninsula in the last 1960s to stabilise the sand dunes when the area was subdivided (see dsra.org.au for more information). Runners of marram grass were also introduced at this time. In combination, these two species have created severe bushfire risk at Dolphin Sands.

We used our grant funds to employ contractors to mulch coastal wattle that community members had cleared from around their houses, beside their driveways and along roadside verges. Reducing coastal wattle helps make Dolphin Sands safer for our members, tourists and, most importantly, emergency service personnel.



By Robyn Moore DSRA



This is a SIZE 1 (6cm x 3cm)
costs \$6 (personal/club) or
\$7.50 (business) per issue

Discounts apply for
multiple issues

The Massage & Healing Clinic

Little Swanport
Rehabilitation-Relaxation-
Remedial Sports-
Musculoskeletal Therapy
Journey-Practitioner Trained

John Geeves ATMS Accred. Health rebates avail.

0428 831 359

www.remedialmassagehobart.com

THE RICHMOND ARMS HOTEL

C1827

BUDGET ACCOMMODATION

20 minutes from Hobart CBD
Hotel rooms from \$70 per night

Phone: (03) 6270 1444
info@richmondarms.com.au



SWANSEA COURTHOUSE REPAIRS & UPGRADE BACK ON TRACK

Swansea Courthouse repairs and modernization continues after a delay due to water pipe damage and non compliance overhead cabling was discovered. The extended delay in replacing the cabling was due to the fact that the Swansea RSL was also using the same power supply and all parties had to be informed and made aware of the situation.

The Courthouse upgrade includes refurbishment of the existing rooms and the old courtroom with the major work of being the conversion of the existing toilets to include disabled facilities.

The Courthouse renovation is to bring the historic building up to code and attract possible businesses to the site. The building has a number of rooms both large and small, and ideal for meetings, exhibitions, etc.

The Courthouse is the oldest in Tasmania built in 1860.

By Robert Gaspari

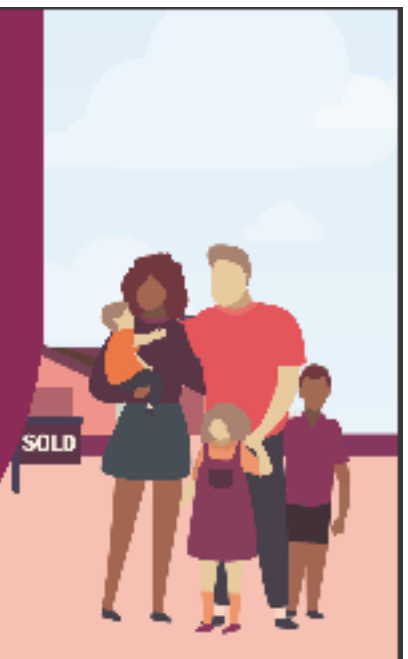
Not all banks offer 100% offset on their home loans.

We're not all banks.

Our Complete Home Loan offers 100% offset on fixed and variable home loans. Which means you could own your home sooner.

Find out more. Search Bendigo Bank home loans.

 Community Bank · Swansea 6257 8825 · Bicheno 6375 1772 ·
Triabunna 6256 4777



 **Bendigo Bank**

Terms and conditions, fees and charges apply. All information including interest rate is subject to change without notice. Full details available on application. Lending criteria apply. Bendigo and Adelaide Bank Limited ABN 11 068 049 178 Australian Credit License 237879. (1547274-1571316) COT_2177464 , 28/05/2021

DETAIL DENTURE CLINIC **Triabunna**

New & old patients welcome

- Implant dentures
- Full dentures
- Partial dentures
- Acrylic based
- Metal based
- Veteran Affairs provider
- Custom mouthguards
- Relines
- Same day repairs
- Health fund rebates



15 Vicary Street, Triabunna

Open every Friday by appointment **Phone 6234 4258**

Insects-R-Gon

PEST CONTROL

Safe and Effective Treatments for all of your Pest Problems

Chris Green & Craig Andrews



Licensed, Insured & Reliable
6243 9865, 0432 210 004
 www.insectsgon.com.au
 email: insectsgon1@gmail.com



May Shaw Health Centre Inc. Swansea Positions Vacant

May Shaw Health Centre Inc. are looking for the staff for the following roles,

EXTENDED CARE ASSISTANT for the HOME CARE PROGRAM (must have a Certificate III in individual Support or equivalent, reliable car and drivers licence).

HOTEL SERVICES (experience in the hospitality area desirable – cleaning, laundry and catering).

HOME CARE COORDINATOR (Must have background in nursing or aged cared with excellent knowledge of home care packages).

We encourage people living in the local area to apply.

Please email hr@mayshaw.com.au or call Jennifer on 0459 855 122 to obtain a copy of the position description and selection criteria.



LIBRARIES TASMANIA

*Cnr Vicary and Melbourne Streets
 Triabunna 7190 Phone: 0472 511 136
springbay.oac@education.tas.gov.au
 ABN 99 529 381 305*

Spring Bay OAC Inc.

VACANCY Assistant Coordinator

The Spring Bay Online Access Centre is looking for an Assistant Coordinator to work part-time commencing as soon as possible and finishing on 30 June 2022.

Hours of work a 4 hours per day for two days per week. Days and times worked are negotiable.

The Assistant Coordinator will be responsible for:

- Assisting clients using the Internet and accessing online services
 - Providing clients with basic computing support and training in standard office products (MS-Office)
 - Supporting clients with the use of mobile devices (phones, tablets etc)
 - Providing relief coverage for the Coordinator as required
- For further information and a copy of the Position Description and Selection Criteria Please contact Richard Wylie
 email springbay.oac@education.tas.gov.au ,
 on 0472 511 136, or call into the centre.

Applications must address the selection criteria & be submitted in writing by 15 July 2021.

DO YOU NEED TO DO PHOTOCOPYING

Large print runs at very reasonable prices. B&W or colour, A4/A3 size and in booklet form if required.



**SWANSEA
 ONLINE
 ACCESS
 CENTRE**

Franklin Street, Swansea. 7190
 Next to the Library
 Ph. 0424 425 908
 Email. gobcnews@gmail.com

4	8	7	6	1	5	2	3	9
9	3	5	2	7	4	6	8	1
2	1	6	3	8	9	4	5	7
6	5	2	4	3	7	9	1	8
3	4	8	1	9	2	7	6	5
7	9	1	8	5	6	3	2	4
8	6	9	5	4	3	1	7	2
5	7	3	9	2	1	8	4	6
1	2	4	7	6	8	5	9	3

Y		F	O	L	L	O	W	E	R	S	
A	A	A	P							O	
W	O	R	S	H	I	P		C	I	T	
L	E			C	R	O	O	N			
S	E	W		V	E	E	R	I	N	G	
	E		I		S	E	N	S	E		
W	A	L	L	O	W	S		C		M	
A	L		L				S	I	A	M	
H	A	S	H	I	S	H		D		A	
O				N			I	N	E	R	T
O	P	P	O	S	I	T	E	S		E	

This weeks puzzle page answers

No cheating now

FEBRUARY 6 2020 - 5:59PM

Labor Lyons MHR Brian Mitchell calls on Tasmanian government to upgrade East Coast tourist road

Local News

The Advocate

Emily Jarvie



Brian Mitchell MP

ON YOUR SIDE!

As your federal MP I am pleased to hear the State Government say it will finally seal Wielangta Road. This cannot happen fast enough.

I called for this to happen in February last year (see press clipping, above) but my plea was dismissed at the time by the Gutwein Government.

Over the past few weeks we have seen how important Wielangta Road is as an alternative east coast route, and how inadequate it is to service significant volumes of traffic, especially after poor weather.

The photo in this advertisement was taken near the bridge on Saturday June 12 after just a couple of days' rain, and it's not even the worst spot for potholes.

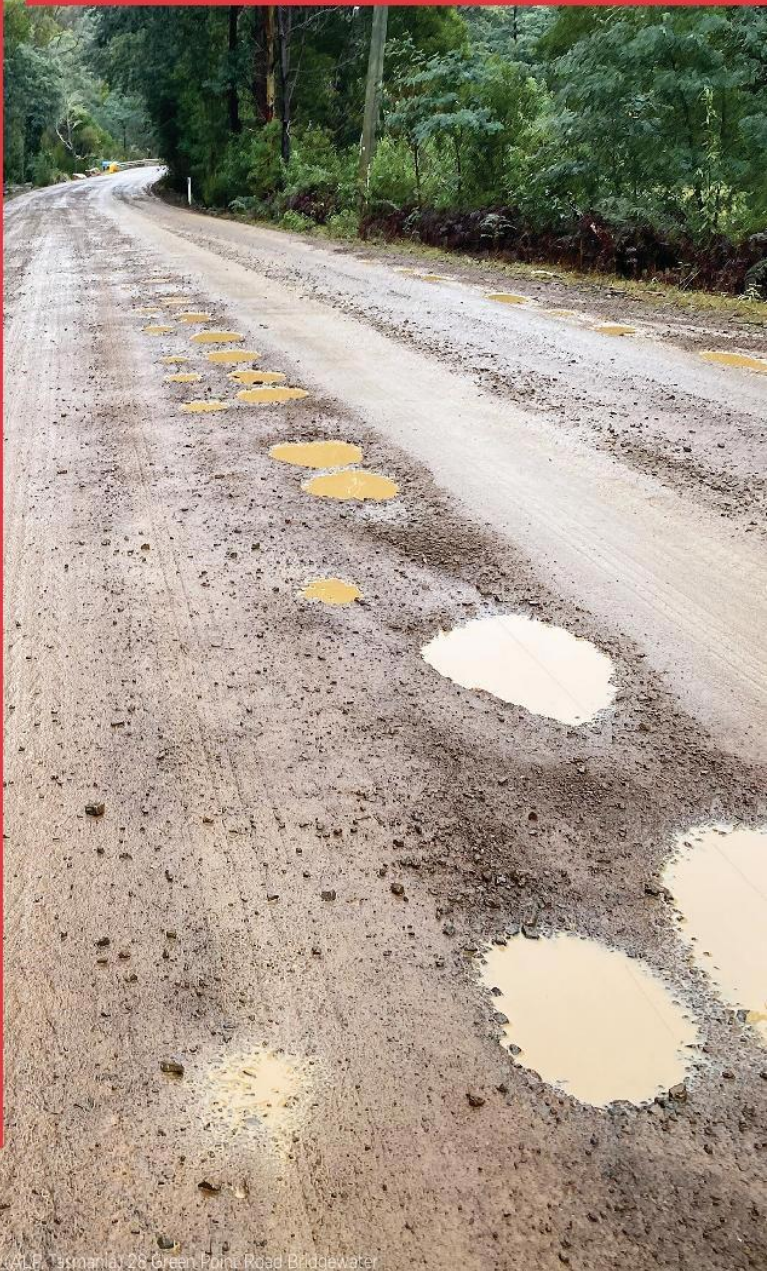
So I am pleased Wielangta Road will be upgraded, but now we are waiting on the Government to provide details.

Meanwhile, my thoughts continue to be with the people of the east coast who continue to suffer the economic pain caused by the closure of Tasman Highway at Orford.

In recent weeks I have visited a number of businesses and residents and it's clear the closure has had a major impact.

While I am pleased the Government listened to my pleas for a business support package to be established I am disappointed the support does not extend to employees, who have lost shifts and in some cases lost their jobs entirely. A short-term wage subsidy would have been most helpful, I think. It is a terrible oversight to ignore the pain being felt by east coast workers and their families.

Please feel free to contact me anytime regarding this or any other issue. You can get me at the office on (03) 6263 3721 or email Brian.Mitchell.MP@aph.gov.au


Authorised by Brian Mitchell MP, ALP, Tasmania, 26 Green Point Road Bridgewater

We would love you to advertise with us!

Please see our [website](http://www.gobcnews.weebly.com) for details.

www.gobcnews.weebly.com

Online in colour every week at www.gobcnews.weebly.com

Senator Claire
CHANDLER
Senator for Tasmania



Your
Liberal Senator
working for
LYONS

03 6290 2018
Senator.Chandler@aph.gov.au
SenatorChandler
senatorchandler.com.au

Authorised by Senator Claire Chandler, Liberal Party of Australia, 42 Bridge St, Richmond TAS 7005

DOWN AND BACK Deliveries



Delivering from
Hobart to Swansea
& everywhere inbetween

Call **Andrew Moore**
0457 711 108
or **Casey Pyke 0457 711 109**
downandbackdeliveries@yahoo.com.au

Timber Joinery
Windows • Doors • Gates •
Stairs • Machining & Moulding •
all profiles
Peter 0447 758 116



**JOBS, HEALTH,
COMMUNITY**



**Rebecca
White MP**
Labor Member
for Lyons

rebecca.white@parliament.tas.gov.au
6212 2225

Authorised by REBECCA WHITE,
33 COLE ST. SORELL

Tasmanian
Labor

Jen
Butler MP
Your Local Member for Lyons



Bridgewater - 62122150
Cove Hill Shopping Centre

Longford - 63242070
7A Wellington Street


jen.butler@parliament.tas.gov.au

ADVERTISEMENT

**Guy
Barnett**
Liberal Member for Lyons MP

Listening, Caring,
Delivering.

Parliamentary
Liberals



15 High Street, New Norfolk TAS 7140 (03) 67012170
GuyBarnettMP guybarnett@dpac.tas.gov.au
Authorised by Guy Barnett, 15 High Street, New Norfolk, TAS 7140.

SWANSEA RSL SUB-BRANCH INC.
KIDS EAT FREE

THESE SCHOOL HOLIDAYS
WEDNESDAY & THURSDAY



Fish Bites
Chicken Strips
Roast of the day
Calamari Rings

PLUS FROG IN A POND
FOR DESSERT

CHILDREN 12
& UNDER

BOOK NOW
6257 8188

TERMS & CONDITIONS APPLY

The Bark Mill

\$20 POT & PARMY

Wednesdays
from the
5th May



Options: ORIGINAL | HAWAIIAN | ITALIANO
MEXICAN | MEDITERRANEAN | SPANISH | IRISH

96 TASMAN HWY, SWANSEA, TAS
CALL US TO BOOK A TABLE ON (03) 6257 8094

Roberts and Partners Lawyers

**Wills & Conveyancing
Legal Advice Commercial
Litigation**
1 Stanton Place,
Cambridge

(03) 6248 4144

admin@robertsandpartnerslawyers.com.au

All Weed Solutions

ABN 605 6549 5606

*Chemical Spraying Specialists
Boom Spray • Spot Spray •
Cut & Paste*

*Certified, Licensed &
Experienced, Fully Insured*
ANY WEED, ANYWHERE!!!

for a free quote phone:

Maurice 0438 081 473

Email: allweedsolutions@bigpond.com

eyelines

OPTOMETRISTS

Your professional Eyelines
Optometrist is visiting

Swansea, Bicheno and
Triabunna very soon
please call us.

To make an appointment call the
Eyelines Team at Sorell
on **6265 3011**
we will tell you where to see us.

Swansea Fishing Charters Tasmania



M: 0427 306 264 | E: jack.kelly.swansea@gmail.com



Lake Leake Inn



Open 7 days
Ph: 0419 750 837

Accommodation Available

Lunch 11.30am-2pm Dinner 5.30-8pm

**Friday Night Jackpot Joker
Meat Tray**

Fishing Comp Saturday 7th August
Enquire at Lake Leake Inn

Come on in we're OPEN

**Knight
Frank**

Connecting people
and property, *perfectly.*

With this being an *exceptional* year in real estate
on the east coast, we look forward to again providing you
with *premium confidential customer service in 2021.*

Please call to discuss any property matters, whether you are buying
or selling, we are here to help to achieve your goals.

Leanne Dann **0417 128 048**
Jim Playsted **0437 222 600**

1A Arncliffe Street, Swansea
P: **03 6257 8694**
www.knightfrank.com

We would love you to advertise with us! Please see our [website](http://www.gobcnews.weebly.com) for details.

www.gobcnews.weebly.com



What is Diabetes?

Diabetes is a serious complex condition which can affect the entire body. Diabetes requires daily self care and if complications develop, diabetes can have a significant impact on quality of life and can reduce life expectancy. While there is currently no cure for diabetes, you can live a full life by learning about the condition and effectively managing it.

Three things you need to know about diabetes:

- It is not one condition- there are three main types of diabetes: type 1, type 2 and gestational diabetes
- All types of diabetes are complex and require daily care and management.
- Diabetes does not discriminate; anyone can develop diabetes.
- Total annual cost impact of diabetes in Australia estimated at \$14.6 billion.

Diabetes is the epidemic of the 21st century and the biggest challenge confronting Australia's health system.

Facts about diabetes

- 280 Australians are diagnosed with diabetes every day. That is one person every five minutes.
- Around 1.8 million Australians have diabetes. This includes all types of diagnosed diabetes (1.3 million known and registered) as well as silent, undiagnosed type 2 diabetes (up to 500,000 estimated)
- For every person diagnosed with diabetes there is usually a family member or carer who also 'lives with diabetes' every day in a support role. This means that an estimated 2.4 million Australians are affected by diabetes every day.

Type 2 - Are you at risk?

While there is no single cause of type 2 diabetes, there are well-established risk factors. Some risk factors can be controlled and others you are born with.

An estimated 2 million Australians are at high risk of developing type 2 diabetes and there are also large numbers of people with silent, undiagnosed type 2 diabetes which may be damaging their bodies.

Symptoms

In type 1 diabetes, symptoms are often sudden and can be life-threatening; therefore, it is usually diagnosed quite quickly. In type 2 diabetes, many people have no symptoms at all, while other signs can go unnoticed being seen as part of 'getting older'. Therefore, by the time symptoms are noticed, complications of diabetes may already be present. Common symptoms include:

- Being more thirsty than usual
- Passing more urine
- Feeling tired and lethargic
- Always feeling hungry
- Having cuts that heal slowly.
- Itching, skin infections
- Blurred vision
- Unexplained weight loss (type 1)
- Gradually putting on weight (type 2)
- Mood swings
- Headaches
- Feeling dizzy
- Leg cramps

TYPE 1 DIABETES
**IF NOT
DIAGNOSED
IN TIME
CAN BE DANGEROUS**

KNOW THE **4T** EARLY SIGNS



SEE THE SIGNS? **IT'S ABOUT TIME**
TO URGENTLY SEE YOUR DOCTOR



11 – 17 July 2021 is National Diabetes Week.

At the pharmacy we will be offering screening for your risk of type 2 diabetes.

Come in and be screened, to be prepared for your future.

Beauty the swansea pharmacy Health the swansea pharmacy Gifts



the swansea pharmacy phone 6257 8167



HUNGRIES

Penne Pasta with Funghi & Salsa di Pana

My recipe for penne pasta with mushrooms and bacon in a cream sauce. A quick delicious dish, ready in about 15 – 20minutes. Penne paste is a great alternative to spaghetti or fettuccini especially if the kids are not up on twisting the fork for long pasta. If you are not a mushroom fan, use cooked peas as an alternative. Works well with gluten free pasta also.

Ingredients:

Mushrooms 2-3 small to medium sized
 2 medium rashers of bacon or an equal amount of pancetta
 parmesan cheese (grated) 25gms
 Cream 250ml
 onion (small)
 garlic (clove)
 Penne pasta 200-250gms
 olive oil (2 tbs)
 salt & pepper to taste
 1/2 cup of dry white wine (optional)
 parsley finely chopped (optional)

Start: In a large pot, bring 3-4Lt of water with a tsp of added salt to the boil.



Filling: Prepare by finely chopping 1 small onion, crush a clove of garlic and chop the bacon or pancetta into small pieces. Chop mushrooms into thin slices.

Cooking: Add the pasta to the boiling water and cook as per time the instructions on the pack (usually between 8 and 12 minutes). Test when pasta is al dente by trying a piece. If ready drain into colander, set aside.

Begin cooking the filling, by sauteing the onion, garlic and bacon in the oil until the onion is soft. Add the mushrooms and cook for 2 minutes , add wine and stir. Add the cream and a 2 tbs of grated parmesan cheese, mix and bring to a gentle simmer, add cooked pasta and (parsley), toss until all the pasta is coated and heated through.

Plate-up and add more grated parmesan cheese and pepper and salt to taste.

Serves 2-3 people and is great with a chilled dry white wine and a smile. Enjoy.

By Robert Gaspari

EAST COAST HOME AND GARDEN MAINTENANCE



Servicing Swansea & Surrounding Areas

Call Steve on 0479 132 404

If you need assistance around your home, including:

- Lawn Mowing & Gardening
- General Home Repairs
- Window Cleaning
- Rubbish Removal
- Gutter Cleaning
- Interior Painting
- High Pressure Cleaning

Honest & Reliable Local Service
 ABN 30329890285

Painting, Gardening, Book

Experience with Heritage Buildings

- Small to medium jobs
 Inside painting
 General gardening
- Weeding
 - Pruning roses
 - Book keeping
- Reasonable rates

Ring/txt Jane:
 0417 540 873



SWANSEA PROPERTY MAINTENANCE



- Moving, gardening and landscape cleaning
- Shower screen maintenance
- Fencing repair and replacement
- Rubbish removal
- Glass, window, door repairs and repairs and replacement
- Plaster wall repair
- Gutter & roof cleaning
- Wood heater and flu cleaning
- Tile work repair
- High pressure cleaning
- Deck maintenance and repair
- General welding maintenance
- All terrain mower slasher and ride-on mowers
- 1.7ton mini excavator

CALL STUART FOX
 04435 99109

8 Wedge Street, Swansea TAS 7190 ABN 34161234295

GIVE AWAY (Swansea area)

Wood shavings (small chips) ideal for a small animal bedding.
 (chickens, rabbits, mice)

Clean, mainly pine wood chips

Ph. Rob 6257 8002 after 3.30pm please

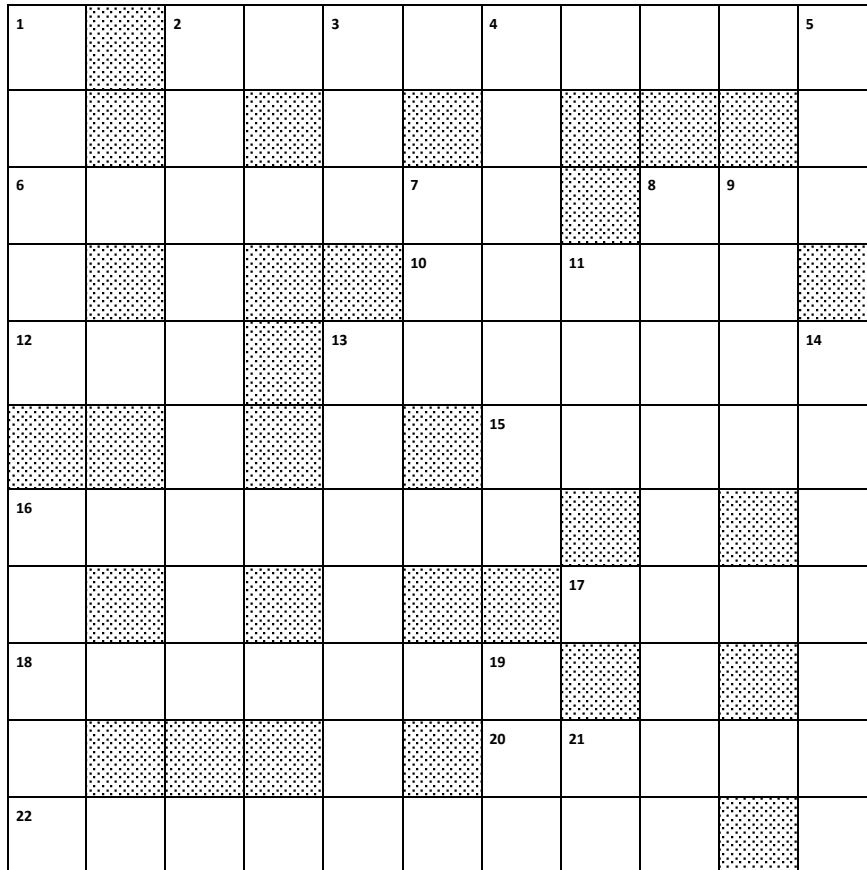
THE PUZZLE PAGE



THIS WEEK'S CROSSWORD

No. 27.2021

By Rob Gaspari



CLUES

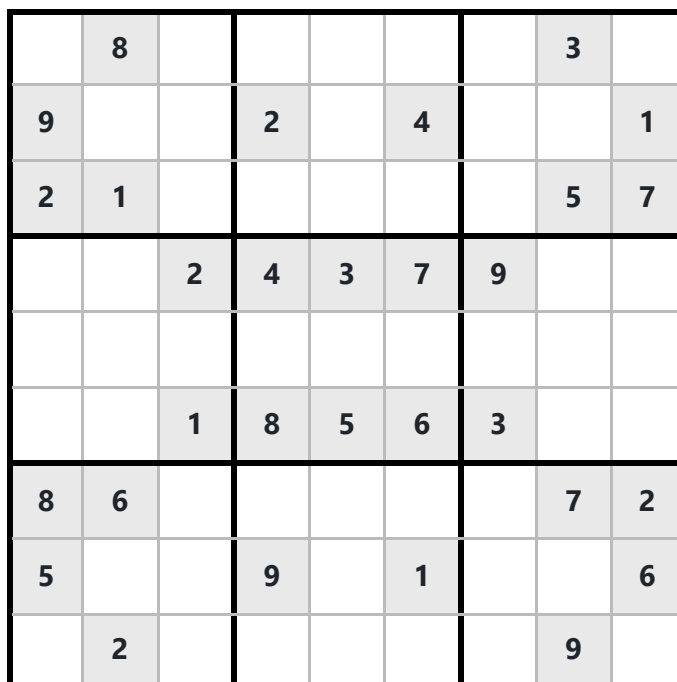
ACROSS

2. Disciples (9)
6. Deify (7)
8. Archaic form of citizen (3)
10. Sing in low undertones (5)
12. Stitch (3)
13. Slew (7)
15. Perceive, feel (5)
16. Welters (7)
17. Old Thailand (4)
18. Tender leaves of hemp (7)
20. Without inherent power of action, etc (5)
22. Converses (9)

DOWN

1. Sailing vessels (5)
2. Goodbyes (9)
3. Sixth scale note (3)
4. Tyrannize (7)
5. Confirmed drunkard (3)
7. Water below 0degrees (3)
8. Concurs (9)
9. Taverns (4)
11. Raw mineral (3)
13. Stringed instruments (7)
14. Having buds (7)
16. Large fish (5)
19. Strike (3)
21. Neon (2)

THIS WEEKS SUDOKU



**ALL ANSWERS
ON PAGE 9**



WHAT'S SO FUNNY?

- We all know about Murphy's Law: anything that can go wrong will go wrong. But have you heard of Cole's Law? It's thinly sliced cabbage.
- My friend gave birth in her car on the way to the hospital and her husband named the kid Carson.
- I begin to read a horror novel in Braille. Something bad is about to happen, I can feel it.
- I stayed up all night and tried to figure out where the sun was. Then it dawned on me.

LIFE'S LIKE THAT :-

Imagine a world without:- TELEVISION
(before online video games)

- What would parents use to keep the kids occupied?
- What would Bert Newton do?

RJG



SPORT & WEATHER

Swansea Golf Club

Result 3rd July 2021.

This week's competition played in perfect conditions was the July Monthly Medal generously sponsored by Fran and Trudi Dowling.

Medal Winner	Mitchel Baxter 51.
Div. 1	Winner Ricky Wright 63 c/b Runner Up Peter Lea 63.
Div. 2	Winner Darryl Down 60, Runner Up Max Hall 63.
Ladies	Winner Sally Siepen 69, Runner Up Alison Smith 70, 3 rd Val Kemp 72 c/b, 4 th Kathy Dance 72
Nearest the Pin.	2 nd /11 th Jim Miley, 8 th /17 th Darryl Down, 9 th /18 th Matt Gall.
Super Pin	4 th /13 th Keith Breheny, 7 th /16 th Mitchell Baxter.
Next Week	Viki Wright Memorial 4 Person Ambrose.

Wednesday 30th May 2021

Ladies Monthly Medal - Stroke

18-Holers	Winner Sally Siepen 63, Runner Up Alison Smith 66.
9-Holers	Winner Jenny Whittaker 31, Runner Up Helen Hall 37.
Nearest the Pin	3 rd Kathy Dance, 8 th Sally Siepen, 4 th Jenny Whittaker, 7 th Jane Cotton.
Birdies	Di Sinclair.
Gobblers	Di Sinclair, Alison Smith.

Chicken Run (Scores Only)

Wednesday,	Mike Woolveridge 30, Keith Breheny 30.5, Ian Johnson 30.1, Putts John Cotton 14.
Friday,	Mitch Baxter 31, Steve Mortimer 31.5, Peter Lea 31.5, Rob Curren 31.5, Putts Tim Bond 13, Mitchel Baxter 13.



Medal winner Mitchel Baxter with sponsor Fran Dowling.

An American tourist asks an Irishman: "Why do Scuba divers always fall backwards off their boats?" To which the Irishman replies: "If they fell forwards, they'd still be in the bloody boat."

Slaney phoned the maternity ward at the hospital. 'Quick!' he said. 'Send an ambulance, my wife is goin' to have a baby!' 'Tell me, is this her first baby?' the intern asked. 'No, this is her husband, Kevin, speakin'.'

Results & the jokes by Paul Nunn

Have you any stories or articles you want to share?
Please see our [website](http://www.gobcnews.weebly.com) for details. www.gobcnews.weebly.com

5-Day Glamorgan-Spring Bay Weather from Bureau of Meteorology

Bicheno

Tue. 6 Jul	Wed. 7 Jul	Thu. 8 Jul	Fri. 9 Jul	Sat. 10 Jul
Shower or two.	Partly cloudy.	Partly cloudy.	Shower or two.	Shower or two.
11 °C	12 °C	13 °C	15 °C	15 °C
7 °C	5 °C	6 °C	7 °C	9 °C

Orford/Triabunna

Tue. 6 Jul	Wed. 7 Jul	Thu. 8 Jul	Fri. 9 Jul	Sat. 10 Jul
Shower or two.	Partly cloudy.	Partly cloudy.	Partly cloudy.	Possible shower.
10 °C	11 °C	12 °C	13 °C	14 °C
5 °C	2 °C	3 °C	3 °C	6 °C

Coles Bay

Tue. 6 Jul	Wed. 7 Jul	Thu. 8 Jul	Fri. 9 Jul	Sat. 10 Jul
Shower or two.	Partly cloudy.	Partly cloudy.	Shower or two.	Shower or two.
11 °C	12 °C	13 °C	14 °C	14 °C
6 °C	3 °C	4 °C	6 °C	8 °C

Swansea

Tue. 6 Jul	Wed. 7 Jul	Thu. 8 Jul	Fri. 9 Jul	Sat. 10 Jul
Shower or two.	Partly cloudy.	Partly cloudy.	Possible shower.	Possible shower.
11 °C	12 °C	13 °C	13 °C	15 °C
5 °C	2 °C	3 °C	4 °C	7 °C