

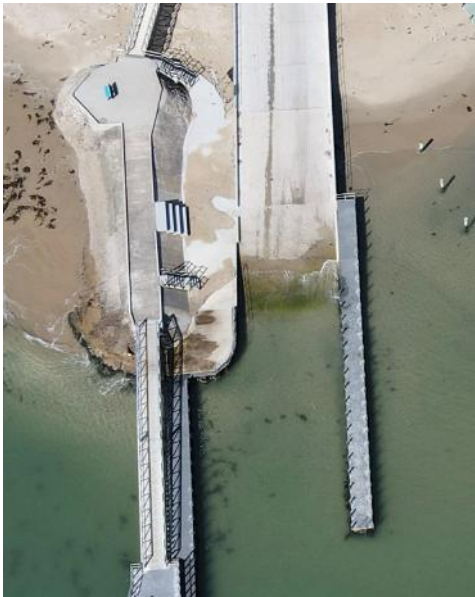
2023

FREE

# GREAT OYSTER BAY Community News

Tuesday 10<sup>th</sup> January 2023

Issue 01.2023



## SWANSEA BOATING – JUBILEE BEACH RAMP

Boaters using Jubilee Beach Boat Ramp are well aware of issues with the ramp. Hopefully the following tips will make the experience less challenging.

- South-easterly weather will bring sand on to the ramp. We've had a lot of that lately so the sand on the ramp is likely to be soft.
- Use the Willy Weather (free) App, or visit the BoM website, to check tide times and heights.
- Visit the ramp a number of times without the boat, at different stages of tide, to see what's happening. Compare what you see with Willy Weather.
- Get to know how high the tide needs to be to comfortably launch and recover your boat.
- Be aware that tidal predictions are based on atmospheric pressure of 1013 hPa. Every 1hPa above 1013 literally pushes the sea level down by approx. 1cm.

- A big fat High pressure system of 1033hPa will bring good weather but cause the tide to be 20cm lower than predicted.
- The rate of rise, or fall, of the tide is greatest between 2 and 4 hours after the tide turns.
- Rate of rise or fall is slowest in the one hour either side of the high or low water.
- Be aware of where the end of the concrete ramp is. Your trailer wheels will most likely go past the concrete but try, really hard, to keep the tow vehicle over the concrete to limit how far it might sink if you get bogged.
- The longer you spend on the ramp the deeper your trailer wheels will sink into the sand.
- Pulling off from the ramp after launching will usually present less risk of getting bogged because the trailer will be light.
- When recovering the boat you can try initially reversing just a little using the slope of the ramp to help loosen the trailer wheels in the sand rather than trying to break the suction on the wheels by starting off uphill, up the ramp.
- When pulling off the ramp steer the car initially toward the centre of the ramp - watching out for other ramp users. This will help break free the trailer wheels on one side at a time.
- If you do get bogged, help might be available from Swansea based, East Coast Towing M: 0418 561 297.
- There's not much can be done about swell. If you can see swells moving across the bay it's probably not safe to launch.
- Waves caused by the sea breeze coming in from

- Swanwick/Coles Bay will get larger as the afternoon progresses.
- If waves are breaking across the ramp it's probably not safe to launch or recover.
- The sea breeze will usually start to ease off around sunset. If you get caught with sea breeze or low water consider anchoring off Jubilee Beach and wait it out until conditions improve. Leave a boat driver on board in case the anchor drags.

If you get into trouble on the water, and have VHF radio on board try giving "Tas Maritime" Radio a call on VHF Ch16. There may be a boat nearby who can help. If no radio, and it's not a life-threatening situation call Tasmania Police Assistance on 131 444. Only call Triple Zero (000) if you are in grave and imminent danger.

Stay safe on the water and remember the most important safety equipment on you boat is YOU – and the decisions you make. That decision might be to go home to get out the mower and save boating for another day. The boat ramp of life is littered with flat seagulls who didn't make a good decision.

*Col Barney  
Freyrcinet Volunteer Marine Rescue*



**OPENING TIMES****SWANSEA ONLINE  
ACCESS CENTRE  
Inc.**

swansea.oac@education.tas.gov.au

**GREAT OYSTER BAY  
COMMUNITY NEWS**

gobcnews@gmail.com

Franklin St. Swansea (at library)

Phone: 0424 425 908

**OPEN 10–3pm MON-FRI**CLOSED WEEKENDS  
+ PUBLIC HOLIDAYS**SWANSEA  
LIBRARY**

Franklin St. Swansea

(at Primary School)

Phone: 6257 8607

**OPEN TUESDAY & THURSDAY  
9.30 am–12.30pm 1.15pm–4.15pm**CLOSED ALL OTHER DAYS  
+ PUBLIC HOLIDAYS**BICHENO  
LIBRARY**

78 Burgess Street (at Town Hall)

Phone: 6387 5609

**OPEN TUES + THURS 10am - 2pm****WED 10am - 4pm****SAT 10am - 12noon**

CLOSED

FRIDAY/SUNDAY/MONDAY  
+PUBLIC HOLIDAYS**OPENING TIMES****GLAMORGAN -  
SPRING BAY  
COUNCIL**

9 Melbourne Street,

Triabunna

operating normal hours of operation,

Monday to Friday

9.00am – 4.30pm

**BUT** with some changes, go to**[https://gsbc.tas.gov.au/services-facilities/  
public-notices/](https://gsbc.tas.gov.au/services-facilities/public-notices/)** for details**WASTE MANAGEMENT CENTRES  
(WMC)****BICHENO WMC** – 2km south of the  
town, on the Tasman Hwy.**COLES BAY WMC** – turn off Coles Bay  
Rd, about 5kms from the township.**ORFORD WMC** – Tasman Hwy, just  
north of Raspins Beach.**SWANSEA WMC** – top of Maria St.Check with GSBCouncil website  
for current opening times**SPRING BAY  
ONLINE  
ACCESS CENTRE  
Inc.**

Vicary &amp; Melbourne Street

Triabunna, Tasmania 7190

Phone: 0472 511 136

springbay.oac@education.tas.gov.au

**OPEN MON-FRI 10-2pm**

CLOSED WEEKENDS

+ PUBLIC HOLIDAYS

**OPENING TIMES****ORFORD  
LIBRARY**

30A Charles Street

Phone: 6123 4039

**OPEN****TUESDAY****10.00am-1.00pm 2.00pm-4.30pm****WEDNESDAY****10.00am-2.00pm****FRIDAY****10.00am-1.00pm 2.00pm-6.00pm**

CLOSED ALL OTHER DAYS

+ PUBLIC HOLIDAYS

**SWANSEA RE-USE SHOPPE**

4 Arnol Street

Opening hours:

Tuesday - Thursday &amp; Saturday

10am to 3pm

**CLOSED****MONDAY, FRIDAY & SUNDAY**

We do not accept mattresses

or donations of obsolete technology

EFTPOS available

**Contact Celia Ralston 0432 415 516****SWANSEA COMMUNITY  
& MEN'S SHED**

Opening Hours:

Tuesday 10am to early afternoon

(men &amp; women's group)

Wednesday 10am to 1pm (men's group)

Wednesday afternoons (school pupils)

Thursday 10am to early afternoon

(men's group)

Friday 10am to early afternoon

(women's group)

**Contact Colin Stevenson 0400 030 746****GREAT OYSTER BAY COMMUNITY NEWS TEAM**

The current Swansea Online Access Centre volunteers and our coordinator

**Advertising, Stories & Copy Deadline: STRICTLY 12 NOON FRIDAY****The Great Oyster Bay Community News is printed on Mondays/Tuesdays.****Please ensure your ads/stories, etc. are in early to meet your advertising deadline times.**Advertisements costing **\$20 or less MUST BE PAID IN CASH** at the Swansea Online Centre prior to publication

Please provide adverts in PDF, JPG or Word format. Articles, letters and photographs of events are most welcome!

**Phone: 0424 425 908 Post: PO Box 308 Swansea 7190 Email: gobcnews@gmail.com****Website: [www.gobcnews.weebly.com](http://www.gobcnews.weebly.com)****Facebook: [www.facebook.com/greatoysterbaycommunitynews](http://www.facebook.com/greatoysterbaycommunitynews)****Printed** at the Swansea Online Access Centre, Swansea, Tasmania**Opening Hours:** Monday to Friday 10am–3pm (Unless otherwise noted)

Closed Sat &amp; Sun + Public Holidays

Franklin Street, Swansea (next to the Library).

**LETTERS to THE GOBCNews TEAM (editor)**Please address your letters to the editorial team and please keep it under 200 words, and email to **gobcnews@gmail.com**.Letters to the editor must comply with our editorial policy, see disclaimer below. **Un-authored letters will not be published.****THE GREAT OYSTER BAY COMMUNITY NEWS** is a weekly newsletter containing articles of interest, community notices and advertising relevant to the Glamorgan Spring Bay Municipality. Advertising revenue is used to finance the printing of 600+ Newsletters, 50 weeks of the year. The Great Oyster Bay Community News is distributed to all major towns of the municipality weekly, free of charge to our readers.

The GOBCNews team

**Disclaimer:** The Great Oyster Bay Community News reserves the right to print any material which is designed to benefit or be of interest to the local community. Consequently, all views or opinions expressed in material published are solely those of the writer of that material and do not necessarily reflect the view or opinions of any persons associated with Great Oyster Bay. Community News, the Swansea Online Access Centre or Libraries Tasmania. The Great Oyster Bay Community News also reserves the right to edit or refuse to publish any material, that also may be deemed damaging, misleading or detrimental to our organisation or community or any person. Please refer to our Editorial and Advertising policies which are located on our website: **[www.gobcnews.weebly.com](http://www.gobcnews.weebly.com)**



## OPENING TIMES

### EAST COAST HERITAGE MUSEUM

22 Franklin Street, Swansea  
Open Mon to Fri 10am-4pm  
**Closed Good Friday & Christmas Day**  
[www.eastcoastheritage.org.au](http://www.eastcoastheritage.org.au)

### SWANSEA OP-SHOP

Franklin St. Swansea  
Trading hours:  
**Monday — Saturday**  
**10 am—2 pm**  
**Closed Sunday**  
Donations most welcome  
Gloria Willis manager  
All Saints Op Shop for Anglican  
Parish of East Coast

### SWANSEA POST OFFICE

Opening Hours  
MONDAY – FRIDAY 7:30AM – 6:00PM  
SATURDAY 7:30AM – 2:00PM  
Full newsagency & post office services  
available during opening hours  
including Saturday  
When the flags are out – we are open  
**Ph.03 6117 0000**

### POP UP BOOK STALL

**PUBS will open daily until  
further notice**

Opening hours: 10.30 – 3pm  
Venue - Community Hall (former Council  
Chambers Building) Vicary St. Triabunna.  
All proceeds are donated to community  
organisations and activities.

#### Enquiries

Judy 0438571262

Beth 0407571181

Margaret 0438606446

Caroline 0411895067

[www.facebook.com/](http://www.facebook.com/popupbookstall)

PopUpBookStall; email

[popupbookstall@hotmail.com](mailto:popupbookstall@hotmail.com)



### SWANSEA RSL SUB - BRANCH INC.

#### WINTER OPEN HOURS BAR

Monday & Tuesday.....2pm  
Wednesday & Thursday.....1pm  
Friday & Sunday.....12pm  
Saturday.....11am

#### BISTRO

Wednesday - Saturday  
5.30pm -8pm  
To make a booking please call  
**(03) 6257 8188**  
or pop into the RSL to reserve a table.

## OPENING TIMES

### SWANSEA GENERAL PRACTICE

May Shaw, Wellington St. Swansea  
**Open Monday—Friday**  
**9.00am-1.00pm 2.00pm-5.00pm**  
For an appointment phone  
**6257 8205**

## CLUBS & GROUPS

### DOLPHIN SANDS COMMUNITY ASSOC. (DSCA)

Email: [dsca.7190@gmail.com](mailto:dzca.7190@gmail.com)  
Website: [dscommunity.org.au](http://dscommunity.org.au)  
Mail: PO Box 133, Swansea, 7190

### SWANSEA BRANCH CWA

meets 2nd Wednesday of the month.  
New members always welcome.  
Craft days alternate months.  
Contact **0402 043 621** for details

### CRANBROOK CRAFT GROUP

Every Wednesday  
10.30 am at  
Cranbrook Hall. Cranbrook.  
Contact Edith **0409 216 793**



### SWANSEA EXERCISE GROUP

held at Swansea Golf Club  
Mondays 8:45 for 9 am. (currently full)  
Followed by **Qigong** at 10 am  
Enquiries:  
**0429 178 076 / 0448 649 765**  
(re Exercise Group) or  
**0448 649 765** (re Qigong)



### SWANSEA TENNIS CLUB

is open to all members  
Available for hire.  
Contact  
**Kathy Dance 0439 732 496.**  
All new members welcome.



### SWANSEA MODEL YACHT CLUB INC.

Sailing, weather permitting.  
**Monday 10.30 am**  
All interested  
w...  
**HELLO SAILORS. SAILING RESUMES**  
**MONDAY 16<sup>TH</sup> JANUARY 2023.**  
... Sw...  
...quiries to Cheryl  
on 0419393774

### ORFORD DF65 RADIO SAILING GROUP

The above group meets from time to time  
in the Orford area to sail popular DF65 and  
other radio-controlled model yachts. If you  
are interested in racing or just sailing  
around, contact -

**David on 0407518171**

## CLUBS & GROUPS

### SPRING BAY WALKERS

Every Thursday morning,  
contact **Peter Hutememier**  
**6257 7506.**

[www.triabunnavillage.com.au/  
springbay-walkers](http://www.triabunnavillage.com.au/springbay-walkers)

### GLAMORGAN SPRING BAY HISTORICAL SOCIETY INC.

Are you interested in local History? Then  
consider joining the Historical Society.  
Currently our office is open  
Tuesdays 10am to 4pm  
22 Franklin Street, Swansea  
<https://glamorganhistory.org.au/>  
Phone: **03 6256 5077**

### THE SWANSEA HOPE CLUB CUPPA & CHAT GROUP

1st & 3rd Monday of each month  
from 2pm onwards  
@ the Community Hub  
4 Arnol St Swansea  
Enquires contact Steve, Linda  
0458 959 820  
Look forward to seeing you there.

### LONELINESS GROUP

**LET'S GET TOGETHER  
& TALK ABOUT IT.**

Hi my name is Kath, and I am organising  
both a ladies group and also a gents group  
to talk about loneliness and isolation. If  
you are interested please text leaving your  
interest so I can organise a time & date  
within the next few weeks.

**KATH**

**0468 998 546 (TEXT ONLY)**

*These groups is not a replacement for your  
mental health worker or your GP.*

### SPRING BAY POTTERS

The Spring Bay Potters Group situated in  
specifically built facilities at The Village  
in Triabunna, the Group regularly meet for  
classes and potting on;

**Wednesdays & Fridays**  
**10.00am to 1.00pm.**

As well as tuition, clay,  
tools, glazes etc. are  
provided for a cost.



Peter Hüttemeier

### TAP DANCING CLASSES

Swansea Town Hall on Mondays  
at the new time of 4.30pm  
All enquiries phone  
**Janelle 0437 264 332**

### MAHJONG & SCRABBLE

1.30 pm every Monday  
at Swansea Golf Club.  
Contact **Lyn Lyne 0438 578 208**

## IMPORTANT

**DURING THE HOLIDAY PERIOD PLEASE CHECK BEFOREHAND  
THAT YOUR CLUB, GROUP OR VENUE IS OPEN**

## CLUBS & GROUPS



### THE ORFORD & DISTRICT RIDING CLUB INC.

The last weekend of every month between 10.00am & 3.00pm  
57 Inkerman Street Triabunna  
For info. Phone: 0427796096  
E-mail: [sandmraham@bigpond.com](mailto:sandmraham@bigpond.com)  
Facebook— Orford and District Riding Club Inc.

**NEW MEMBERS WELCOME**

### FREYCINET VOLUNTEER MARINE RESCUE

Meets 7pm, 3rd Tuesday each Month  
VMR Boatshed,  
76A Maria Street, Swansea  
Visitors and new members welcome  
**Enquiries: 0400 329 973**

### GKR KARATE

Karate classes starting on Thursday at the Triabunna District School.  
The class starts at 12 noon.  
**For further details contact Nathan Jacobs 0482 471 443**

### NATIVE ANIMAL RESCUE



Rescue, rehabilitation and release of native wildlife. Also treating wombats with mange in our Municipality.

Contact **Marcia 0448714419**

### DOLPHIN SANDS ART GROUP

King's Gallery  
22 Cambria  
Dolphin Sands



- Friday 11am to 1pm
- BYO everything
- \$5 for charity
- Some easels available
- Coffee from gallery

Contact Laurie  
**0499 193 821**

### SWANSEA MEN'S PROBUS CLUB

Meeting starts 10am,  
guest speaker 11am, usually followed by BBQ  
every 2nd Tuesday of the month at Swansea Golf Club

## CHURCH NOTICES



### EAST COAST ANGLICAN

Please join us for church every Sunday  
10am Swansea (10 Noyes St)  
4pm Triabunna (1 Franklin St)  
6257 3321

[www.eastcoastanglican.church](http://www.eastcoastanglican.church)

Swansea - 10 Noyes St  
Triabunna - 1 Franklin St  
Bicheno - Corner Burgess St & Morrison St  
Woodsdale - 2265 Woodsdale Rd

### ST. ANDREWS UNITING CHURCH SWANSEA

will be holding services on the 1st & 3rd Sundays of each month at 10am.

Everyone is invited to attend.

All Welcome

\*\*\*\*\*

Uniting Church Christmas Service will be held on  
Saturday, Christmas eve, 5pm  
at Gala Kirk, Cranbrook  
A warm welcome extended to all



## COMMUNITY NOTICES

### BARKING DOGS

*Dogs barking?  
Are they a problem?  
Any complaints  
Please contact*

*Glamorgan-Spring Bay Council*

### MILITARY COMPENSATION & REHABILITATION ADVOCACY SERVICES

are now available at the Swansea RSL for ex-service, current serving and family members of the ADF. Contact  
**Steven Kenny 0438 060 047**

## COMMUNITY NOTICES

### THE VILLAGE

**20 Melbourne Street, Triabunna**  
Community Market third Sunday of each Month 10.00am to 1.00pm. Large range of stalls and activities. Sell from your car boot, charge applies. Large range of community activities during the week,  
for details see:

<http://triabunnavillage.com.au/>

<https://www.facebook.com/VillageTriabunna/>

### COLOUR ISSUES for 2023

**ISSUE 01 JANUARY 10**

Issue 13 April 05

Issue 26 July 05

Issue 39 October 04

Issue 50 December 20

### SWANSEA COMMUNITY ROOM

with kitchen facilities. Available for hire  
**Contact Heather Groombridge 0416 200 172**



SWANSEA PRIMARY SCHOOL LAUNCHING INTO LEARNING INVITES YOU TO

## READ, SING, PLAY & CREATE!

WHERE?  
SWANSEA PRIMARY SCHOOL LIBRARY

WHEN?  
EVERY FRIDAY DURING SCHOOL TERMS  
9.30-10.30 AM

COST?  
FREE

WHO IS IT FOR?  
YOUNG CHILDREN (0-4) AND THEIR FAMILIES

WHAT TO EXPECT  
PARENTS, TEACHERS AND CHILDREN PLAYING ALONGSIDE EACH OTHER, HAVING FUN AND LEARNING TOGETHER.

FOR MORE INFORMATION, PLEASE CONTACT THE SCHOOL.

**Launching into Learning**

## MEALS ON WHEELS SWANSEA ROSTER

Date	2023	Name
Wed	11 Jan	D Anderson
Thu	12 Jan	N & P Green
Fri	13 Jan	D & C Busuttill
Mon	16 Jan	T Griggs
Tue	17 Jan	L Camus & C Andrews

## IMPORTANT

**PLEASE KEEP ALL YOUR COMMUNITY NOTICES UP TO DATE BY CONTACTING US ON  
PHONE: 0424 425 908 OR EMAIL: [GOBCNEWS@GMAIL.COM](mailto:GOBCNEWS@GMAIL.COM)**



# Merry Christmas

Wishing you all a very Merry Christmas  
and a Happy New Year!

Works Hard.  
Gets Results!

**Brian Mitchell MP**  
Your Federal Member for Lyons



## COMMUNITY NOTICES



**SWANSEA COMMUNITY CHRISTMAS** would like to Thank everyone who helped celebrate Swansea Community Christmas 2022. We hope you enjoyed the parade, festivities and decorations.

Huge Thankyou to our amazing organising team.

*Kelvin Jones*  
*Swansea Community Christmas committee*

## FIRE PERMITS

### WHAT'S IT ALL ABOUT ?

If you didn't realise all of our local Fire brigades are totally volunteer run . That means we don't get paid , we freely give up our time to protect our respective communities , we stop what we are doing to attend incidents whether it be work or family events .

So all we ask from you the community is HELP us to better manage/ lessen our callouts by following the steps below. We are currently in a Fire Permit period so please assist us to Help you better . Below is an extract from the Tasmania Fire Service regarding the Fire Permit system.

### DO I NEED A FIRE PERMIT?

You need a fire permit for the burning of vegetation at all times during a declared Fire Permit Period regardless of the weather conditions.

To get a permit you should simply contact your local Fire Permit Officer on 1800 000 699 (permits are free).

Barbecues, Campfires or Incinerators do not need a permit but must:

- Be at least three metres away from overhanging branches, stumps, logs and trees and other flammable material.
- Not be lit on peat soils or grassed sand dunes.
- Have someone stay with the fire until it is completely extinguished.
- Comply with local Council or Parks regulations or by-laws

### WHAT IS A FIRE PERMIT?

The Tasmania Fire Service may declare a Fire Permit Period for all or parts of the State when the danger of bushfire is considered high

Getting a permit is important because:

- It ensures you are complying to conditions to make sure your burn is safe.
- It provides certain protections for the person lighting the fire.

During the Fire Permit Period, fires are not banned. They are allowed where there are good opportunities to safely use fire for land management purposes.

### WHAT'S IN A FIRE PERMIT?

Your permit will contain conditions to increase the safety of the fire such as

- the specified weather conditions allowed.
- the requirement for certain equipment.
- who you need to notify before you light

### HOW DO I CONTACT MY LOCAL FIRE PERMIT OFFICER?

Call the Tasmania Fire Service on: 1800 000 699

### HOW DO I REGISTER MY BURN OR PERMIT?

If you have made the necessary preparations and are ready to register your burn or your permit

Call the Tasmania Fire Service on: 1800 000 699

### WHAT HAPPENS IF MY FIRE GETS OUT OF CONTROL?

Contact the Tasmania Fire Service by dialling triple zero (000) or if a TTY user call 106. This is the quickest way to get local assistance to bring your fire under control. As long as you have met all the conditions on your permit and have taken all reasonable steps to keep the fire on your property, you will not be liable if any damage is caused by the fire.

\*\* Provided by your Local Volunteer Fire Brigades ( Locals Helping Locals )



**ADVERTISING, STORIES & COPY DEADLINE:  
STRICTLY 12 NOON FRIDAY**



ADVERTISEMENT



**Guy Barnett**  
Liberal Member for Lyons MP

Listening, Caring,  
Delivering.

**Liberal**

15 High Street, New Norfolk TAS 7140 (03) 67012170  
GuyBarnetMP | guy.barnett@dpac.tas.gov.au  
Authorised by Guy Barnett, 15 High Street, New Norfolk, TAS 7140.

**JOBS, HEALTH,  
COMMUNITY**




**Rebecca White** MP  
Labor Member  
for Lyons

rebecca.white@parliament.tas.gov.au  
6212 2225

Authorised by REBECCA WHITE,  
33 COLE ST. SORELL



ADVERTISEMENT



**Jane Howlett**  
Liberal Member for Prosser MLC

Wishing everyone a  
*Merry Christmas*  
and a Happy  
New Year!

Shop 1/31 Cole Street, Sorell TAS 7172 (03) 6212 2101  
jane.howlett@dpac.tas.gov.au | JaneHowlettMLC  
Authorised by Jane Howlett, Shop 1/31  
Cole Street, Sorell TAS 7172.

**JAWS MAINTENANCE  
& SERVICES**

- Home and Property Maintenance
- Landscaping
- Gardening
- Lawn Mowing and Brush Cutting
- Rubbish Removal
- Property Hazard Reduction/clearing

No job too big or too small....



Contact us today  
to make your  
home JAWSome!!

**Joshua Wickham**  
0438 866 735  
ABN: 20 506 110 168  
SWANSEA

[jawsmands@gmail.com](mailto:jawsmands@gmail.com)  
Find us on Facebook:  
[@JAWSMandS](https://www.facebook.com/JAWSMandS)

**eyelines**  
OPTOMETRISTS

Your professional Eyelines  
Optometrist is visiting  
Swansea, Bicheno and  
Triabunna very soon  
please call us.

To make an appointment call the  
Eyelines Team at Sorell  
**on 6265 3011**  
we will tell you where to see us.

SENATOR  
**WENDY ASKEW**  
LIBERAL SENATOR FOR TASMANIA

*Please contact me  
if I can be of  
any assistance.*



46 Cameron Street (PO Box 97)  
Launceston TAS 7250  
6331 8501  
senator.askew@aph.gov.au  
SenatorAskew  
Authorised by W Askew, Liberal Party of Australia, 46 Cameron Street, Launceston TAS 7250.

**Jen Butler** MP  
Your Local Member for Lyons

**Labor**

Bridgewater - 62122150  
Cove Hill Shopping Centre

Longford - 63242070  
7A Wellington Street



[jen.butler@parliament.tas.gov.au](mailto:jen.butler@parliament.tas.gov.au)

**ROBERTS INSURANCE PROVIDERS**



Contact us today for a quote!  
Household - Farm & Rural - Business - Public Liability  
workers Compensation & More  
**Cambridge & Swansea**  
P: 0409 877 244  
admin@robertsinsurance.com.au  
www.robertsinsuranceproviders.com.au

Servicing Swansea 2nd & 4th Friday each month 11-2.00pm

No appointment required!

Roberts Insurance Providers Pty Ltd is a Corporate Authorised Representative of Resilium Insurance Broking Pty Ltd ABN 92169975973 AFSL No. 460382

**SWANSEA PROPERTY MAINTENANCE**



- Window & door repairs
- Gardening & pruning
- Flu & wood heater cleaning
- Property clean ups
- Window cleaning
- Small property slashing — All terrain ride on
- Gutter & roof cleaning
- Pressure washing
- Waste removal
- Mini Excavator work 1.7t
- Retaining walls
- Lawn & edging — ride on & mower
- Tree trimming
- Shower screen
- Handy man service for all types of repairs

**CALL STUART FOX 0409 435 991**  
8 Wedge Street, Swansea TAS 7190 ABN 34161234295

**HAVE YOU ANY STORIES OR ARTICLES YOU WANT TO SHARE?**  
PLEASE SEE OUR [WEBSITE FOR DETAILS. WWW.GOBCNEWS.WEBLY.COM](http://WWW.GOBCNEWS.WEBLY.COM)



**Delivering from Hobart to Swansea & everywhere inbetween**

Call Andrew Moore

**0457 711 108**

[downandbackdeliveries@yahoo.com.au](mailto:downandbackdeliveries@yahoo.com.au)

**GREAT OYSTER BAY COMMUNITY NEWS RATES**

SIZE	Price per single issue	
	NPClubs & Personal	Business
1 (6x3cm)	\$6	\$7.50
2 (6x6cm)	\$12	\$15
3 (6x9cm)	\$18	\$22
4 (6x12cm)	\$24	\$30
1/4 page	\$36	\$45
1/3 page	\$48	\$62
1/2 page	\$66	\$86
Full page	\$102	\$112

**Discounts apply on multiple issues**

**DETAIL DENTURE CLINIC Triabunna**

New & old patients welcome

- Implant dentures
- Full dentures
- Partial dentures
- Acrylic based
- Metal based
- Veteran Affairs provider
- Custom mouthguards
- Relines
- Same day repairs
- Health fund rebates



**15 Vicary Street, Triabunna**

Open every Friday by appointment **Phone 6234 4258**

**Roberts and Partners Lawyers**

**Wills & Conveyancing  
Legal Advice Commercial  
Litigation**  
1 Stanton Place,  
Cambridge

**(03) 6248 4144**

[admin@robertsandpartnerslawyers.com.au](mailto:admin@robertsandpartnerslawyers.com.au)

**Insects-R-Gon  
PEST CONTROL**

Safe and Effective Treatments  
for all of your Pest Problems

**Chris Green & Craig Andrews**



Licensed, Insured & Reliable  
**6243 9865, 0432 210 004**  
[www.insectsrگون.com.au](http://www.insectsrگون.com.au)  
email: [insectsrگون1@gmail.com](mailto:insectsrگون1@gmail.com)

**DO YOU NEED  
PHOTOCOPYING**

Large print runs at very reasonable prices. B&W or colour, A4/A3 size.

Standard or in booklet form.

We can also print/scan/email your important documents.

Discounts for SOAC members



**SWANSEA  
ONLINE  
ACCESS  
CENTRE  
INC.**

Franklin Street, Swansea, 7190.

Next to the Library

Phone: 0424 425 908

Email: [gobcnews@gmail.com](mailto:gobcnews@gmail.com)

M	A	T	H	E	M	A	T	I	C	S		
E	R	N	U	N	O	T	E					
T	H	I	E	F	C	C	I	R	C	A		
R	E	V	R	A	T	I	O	N	A	L		
O	X	I	D	A	T	I	O	N	T	A	P	
N	A	N	E	O	N	S	A	I	R			
O	I	L	C	N	I	R	A					
M	T	H	Y	A	S	I	A	T				
E	R	O	S	I	O	N	T	R	U	S	T	
T	A	S	K	W	E	A	S	E	L			
U	T	R	E	E	I	N	S	E				
T	I	E	S	T	R	I	P					
E	R	E	L	I	S	H	E					

3	1	8	5	6	7	2	4	9
9	2	5	4	1	3	6	8	7
7	6	4	8	2	9	1	5	3
4	3	1	7	8	6	5	9	2
8	9	6	2	3	5	7	1	4
2	5	7	1	9	4	8	3	6
6	4	2	3	5	1	9	7	8
5	8	3	9	7	2	4	6	1
1	7	9	6	4	8	3	2	5

R	P	S	Y	C	H	O	L	O	G	I	S	T	B
I	N	E	E	T	U	T	I	T	S	N	I	R	J
S	E	E	L	E	Y	B	O	N	E	S	E	N	E
A	N	I	N	O	H	O	D	G	I	N	S	O	F
N	I	T	A	S	E	R	E	Z	N	N	N	T	F
N	L	E	Y	F	S	N	B	A	F	N	O	G	E
H	M	M	O	B	C	E	N	N	B	B	G	N	R
O	N	P	R	O	N	A	D	A	I	L	O	I	S
E	A	E	A	N	T	H	M	G	E	N	M	H	O
T	N	R	S	H	N	N	B	I	K	N	R	S	N
N	G	A	S	Y	S	T	O	E	L	O	O	A	I
L	E	N	Z	A	C	K	O	T	E	L	G	W	A
E	L	C	C	O	C	N	T	S	H	R	E	O	N
I	A	E	T	I	N	M	H	S	W	E	E	T	S

**This weeks PUZZLE PAGE answers  
NO CHEATING NOW!**



## ARNOL PROJECTS

CONTAINER CABINS -  
OUR DESIGN OR YOURS



**Dale Arnol - 0417 332 988**

[arnolprojects@bigpond.com](mailto:arnolprojects@bigpond.com)

Phone/fax: 6257 8288

41 Maria Street, Swansea.

- Mobile welding
- Aluminium-stainless steel
- Structural & general engineering
- Stainless wire handrails
- Building decks & sheds
- Trailer, machinery repairs
- Wood heater repairs
- Steel sold, cut to length

Qualified trade persons

**NO JOB TOO BIG OR SMALL**

ABN 74 648 177 056

## SONGS FROM THE SIXTIES

(Pat Boone)

On a day like today

They pass the time away

Making Sand Castles

Out of Sand

How we laughed

The boaties cried

Each time they saw the tide

Turn those sand castles back into sand.



### COLES BAY FORESHORE PATHWAY SURVEY

Following a second round of public consultation on this project council has made modifications to the proposed plan and is putting forward the details of the project with a time frame for completion.

We encourage people to have a look at the plans and read the information. Then provide feedback through the survey which will close on January 13th, 2023.

The survey results will be taken to a council meeting in late January with a view to progressing the project in accord with the proposed timeline incorporating any consequential findings from the survey.

The proposed plans and survey are available to accessed on the Council website, or you can scan the below QR code.

Greg Ingham  
GENERAL MANAGER



## Now open in Sorell!



Dr Girish Sasidharan



Dr Sophie Lomas



Dr Sam Yeoh

Shop 6 / 35-37  
Gordon St  
**Sorell**



193-195  
Elizabeth St  
**Hobart**

### Contact us!

P 6231 2356

E [info@islanddentalhobart.com.au](mailto:info@islanddentalhobart.com.au)

Book online at [islanddentalhobart.com.au](http://islanddentalhobart.com.au)  
or scan this QR code:



**east coast tasmania**



**EAST COAST  
WINE TRAIL**



BREAK O'DAY REGIONAL ARTS PRESENTS

# Summer Celebration

KIDS ACTIVITIES · LIVE MUSIC · MARKET STALLS · FOOD

**Free Entry**

LIVE MUSIC  
THE RENNIES

January 20th 2023  
4-7pm

ST MARYS RECREATION GROUND  
BYO Chair/PICNIC MAT

Harefield Rd, St Marys  
bodregionalarts@gmail.com

# SWANSEA MARKET

This Saturday, 14th Jan  
early - 1pm  
at the Town Hall.



Local arts and crafts,  
morning tea.  
Sorry no vegies this month

Phone: 0438 74 8545

## POSITION VACANT

The Bark Mill Tavern and Bakery Café are currently seeking to employ positive, experienced and loyal staff in multiple positions for immediate start.

**Front Of House Bakery Café, Front of House Tavern, Maintenance, Qualified Chef**

*These are casual positions with possible part-time or full-time employment for the right candidate*

**What we can offer:**

- A fun high paced work environment
- Long term employment for the right person

**We want to hear from you if you possess the following requirements**

### FRONT OF HOUSE TAVERN:

- Current Tasmanian RSA or ability to obtain one
- Strong customer service and exceptional communication skills
- Can demonstrate they can work as part of a team as well as independently
- Must be able to work weekends and nights
- RSG and Special Employee Licence gaming would be advantageous.

### FRONT OF HOUSE BAKERY CAFÉ:

- Strong customer service and exceptional communication skills
- Can demonstrate they can work as part of a team as well as independently
- Current Tasmanian RSA or ability to obtain one
- Barista Training and/or equal experience

Must be able to work weekends and early mornings

### MAINTENANCE:

- Well organised and excellent time management skills
- Ability to operate general garden maintenance equipment
- Must be able to work independently

### QUALIFIED CHEF:

- Must have a Certificate IV in Commercial Cookery
- Have 1 years of experience working in a commercial setting
- Be able to provide current references
- Must be able to work nights and weekends

- Be able to work well in a team
  - Demonstrate sound understanding and knowledge of the workings of a fast-paced kitchen environment.
- Consideration will be given to an apprentice

Send your resume to  
[accounts@barkmilltavern.com.au](mailto:accounts@barkmilltavern.com.au)

## NOTICE

**SWANSEA ONLINE  
ACCESS CENTRE INC.**  
Yearly memberships \$5.00  
**NOW DUE  
FOR 2023**

Please present membership card  
to receive discount on printing, etc

Robert j Gaspari (sec)



**2023**

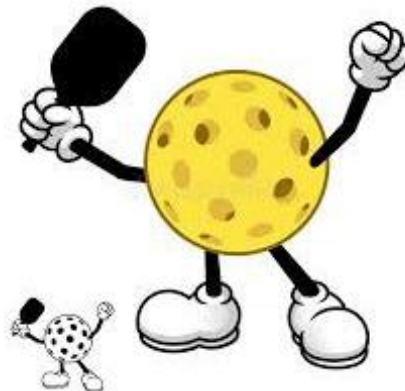
SWANSEA ONLINE ACCESS CENTRE INC.  
31 FRANKLIN ST. SWANSEA. TASMANIA. 7190  
PH. 0424 425 908  
EMAIL: SWANSEA.OAC@EDUCATION.TAS.GOV.AU

Members Name: .....

Members no: .....



**NEW TO PICKLEBALL  
OR JUST WANT A SOCIAL,  
NON COMPETITIVE  
GAME?  
TUESDAY'S AT 4PM  
SWANSEA SCHOOL HALL**



## TJ ACCOUNTING

– Phone for Appointment - 0410 051 082

*Business Clients – Initial First ½ Hr Free*

Tax Returns/ Bookkeeping/ BAS/ Audit / Finance

[tjaccounting13@bigpond.com](mailto:tjaccounting13@bigpond.com)

[www.tjaccounting.com.au](http://www.tjaccounting.com.au)

Where: 20 Tasman Hwy, Bicheno TAS. 7215



Tax agent  
24740881

21 Years' Experience  
in Accounting & Tax





**FREE-RANGE PORK**  
 PIG-IN-A-BOX BUTCHERED,  
 PACKAGED, DELIVERED  
**25KG HALF PIG \$345**  
 CALL 0459 080 201 OR  
 VISIT [LONGNAMEFARM.COM.AU](http://LONGNAMEFARM.COM.AU)

**Timber Joinery**  
 WINDOWS • DOORS • GATES •  
 STAIRS • MACHINING & MOULDING •  
 ALL PROFILES  
 **Peter 0447 758 116**

**DOLPHIN SANDS**  
**REIKI**  
 ACCESS BARS  
 BY APPOINTMENT  
 0448975096  
 SIMONE MEIERL

WHAT'S ON  
 AT  
*The Bark Mill*  
*Wednesdays*  
**\$20 POT & PARMY**  
 EVERY WEDNESDAY  
 LUNCH 12-2PM  
 DINNER 5-8:30PM

*Fridays*  
**6:30PM**  
**MEAT TRAY RAFFLE**

OPEN FOR BREAKFAST,  
 LUNCH & DINNER DAILY

96 TASMAN HWY, SWANSEA  
 PH: 03 6257 8094 | [WWW.BARKMILLTAVERN.COM.AU](http://WWW.BARKMILLTAVERN.COM.AU)



**SUMMER BLUES** AT  **BUCKLAND CHURCH**

WITH HOBART BLUES BAND  
**TERRAPLANE AND THE HUDSON HORNS**

Bring a chair or picnic blanket and enjoy a lazy Sunday afternoon in the churchyard to the sounds of blues, funk, swing, jazz and ballads

Indulge yourself!  
 Robbie's Wood Fired Pizzas  
 Gert and Ted's Food Truck  
 Beer by Ye Olde Buckland Inn  
 Wine by Twamley Farm  
 BBQ by TAS Volunteer Fire Brigade  
 Valhalla Ice Cream Van

**2pm-6pm on 22 January**

Children under 5 FREE  
 Family ticket \$50  
 Single ticket \$20

To book tickets, go to our website [fobc-tas.org](http://fobc-tas.org) or our Facebook page




**EASTCOAST TREE SURGEON**

**ALL ASPECTS OF TREE WORK**  
**32 YEARS OF EXPERIENCE**  
**COUNCIL APPROVED CONTRACTOR**  
**LIVING & SERVING THE WHOLE OF THE EAST COAST**  
**BASED IN SWANSEA**

**CALL: HUGH WILSON 0431 755 300**

COMMUNITY SERVICE POSTER - PLEASE DO NOT REMOVE

**WE CAN HELP.** with **Reading Writing & Maths**


**26TEN**  
 Get the tools for life

**CONFIDENTIAL**

Help a Family Member, New Australian or a Friend  
 This is a free service, privacy is guaranteed  
**ONE ON ONE support - we want to help!**

**FREE 1 on 1 support**  
**1300 00 2610**

Supported by Swansea Online Access Centre 03 6257 8806





# ROADWORKS REPORT

## FRIDAY, 06<sup>TH</sup> TO 20<sup>TH</sup> JAN 2023

### TRIABUNNA

between Vicary's Rivulet and Hermitage Road, Triabunna. Resurfacing of road. Reduced speed limit with frequent lane closures during working hours Monday, 9 January 2023, to Friday, 13 January 2023 7:00am to 5:00pm

### CRANBROOK - MYRTLE BANK

We will be repairing the Tasman Highway between Glen Gala Road, Cranbrook and Myrtle Bank Road, Myrtle Bank, until Tuesday, 31 January 2023. There will be a reduced speed limit and frequent lane closures during our working hours, 7:30 am - 5:30 pm.

### ELEPHANT PASS ROAD - ELEPHANT PASS GRAY UPDATED

Elephant Pass has been closed from Tuesday, 3 January 2023 so we can safely and quickly finish the repairs following damage from the flooding event in October 2022. Local access to properties on Elephant Pass Road will be available, however all access from the Tasman Highway to St Marys will be via St Marys Pass/Esk Main Road. We expect to be finished by early February 2023.

### ST MARYS PASS (ESK MAIN ROAD) GRAY NEW

We will be repairing a section of St Marys Pass (Esk Main Road), Gray, on Tuesday, 10 January and Wednesday, 11 January 2023.

There will be a reduced speed limit and frequent lane closures during our working hours, 7:30 am - 3:00 pm.

**Please allow up to 15 minutes extra travel time if you are passing through.** If we are unable to complete the work on these days due to bad weather or other conditions, we may also need to work on Thursday, 12 and/or Friday, 13 January 2023.

### LAKE LEAKE HIGHWAY - LAKE LEAKE

between Yalleena Nature Retreat and Flat Rock Lookout, Lake Leake. Drainage works. Reduced speed limit with frequent lane closures during working hours Monday, 9 January 2023 Tuesday, 31 January 2023 7:30 am to 5:30 pm

### ARTHUR HIGHWAY - SORELL

between Nash Street and Rosendale Road, Sorell Bridge maintenance. Reduced speed limit with occasional lane closures during working hours Monday, 9 January 2023 Friday, 20 January 2023 7:00am to 6:00pm

**TASMAN HIGHWAY** between Alma Road and Orford Golf Course, Orford. Drainage works Reduced speed limit with frequent lane closures

during working hours Friday, 14 October 2022 Tuesday, 31 January 2023 7.00 am to 5.00 pm

### TASMAN HIGHWAY - SWANSEA

Meredith River Bridge, Swansea. Bridge maintenance Reduced speed limit with frequent lane closures during working hours Friday, 7 October 2022 Tuesday, 31 January 2023 7.00 am to 5.00 pm

### TASMAN HIGHWAY - KELVEDON BEACH

Tree works Reduced speed limit with frequent lane closures during working hours Friday, 30 December 2022 Tuesday, 31 January 2023 7.00 am to 5.00 pm



Visit the [Transport website](#) for a detour map and more information.



# The 6-Day Glamorgan-Spring Bay Weather Forecast

from Bureau of Meteorology

## Bicheno

## Orford/Triabunna

Tue. 10 Jan	Wed. 11 Jan	Thu. 12 Jan	Fri. 13 Jan	Sat. 14 Jan	Sun. 15 Jan
Cloudy.	Partly cloudy.	Partly cloudy.	Mostly sunny.	Cloudy.	Partly cloudy.
19 °C	20 °C	22 °C	23 °C	23 °C	24 °C
14 °C	12 °C	13 °C	14 °C	16 °C	17 °C

Tue. 10 Jan	Wed. 11 Jan	Thu. 12 Jan	Fri. 13 Jan	Sat. 14 Jan	Sun. 15 Jan
Cloudy.	Partly cloudy.	Mostly sunny.	Mostly sunny.	Mostly sunny.	Partly cloudy.
19 °C	21 °C	23 °C	24 °C	26 °C	24 °C
13 °C	11 °C	12 °C	13 °C	15 °C	16 °C

## Coles Bay

## Swansea

Tue. 10 Jan	Wed. 11 Jan	Thu. 12 Jan	Fri. 13 Jan	Sat. 14 Jan	Sun. 15 Jan
Cloudy.	Partly cloudy.	Mostly sunny.	Sunny.	Partly cloudy.	Partly cloudy.
20 °C	21 °C	23 °C	24 °C	25 °C	24 °C
14 °C	12 °C	13 °C	15 °C	16 °C	16 °C

Tue. 10 Jan	Wed. 11 Jan	Thu. 12 Jan	Fri. 13 Jan	Sat. 14 Jan	Sun. 15 Jan
Cloudy.	Partly cloudy.	Sunny.	Mostly sunny.	Partly cloudy.	Partly cloudy.
19 °C	21 °C	24 °C	25 °C	26 °C	25 °C
13 °C	11 °C	12 °C	13 °C	15 °C	16 °C



east coast tasmania



EAST COAST WINE TRAIL

## Swansea Pharmacy

We hope that 2023 is a safe, happy & healthy year for you & your family. We look forward to another year of assisting with & providing solutions for your health care needs.

### Pharmaceutical Benefit Scheme (PBS) 2023

The Pharmaceutical Benefits Scheme (PBS) is an Australian Government program that benefits you and all Australians by subsidising medicines to make them more affordable.

2023 will see the maximum general co-payment drop from \$42.50 to \$30. Concessional prescriptions are \$7.30 Safety Net Thresholds from 1 January 2023.

General - \$1,563.50. Concessional - \$262.80

Visit [pbs.gov.au](https://pbs.gov.au) for more information



**Sunburn treatment includes**, Drinking plenty of [water](#), because spending time in the sun can lead to dehydration as well as sunburn. Hydralyte is recommended by our pharmacist. Gently apply cool or cold compresses, bandages, or bathe the area in cool water. Avoid using soap as this may irritate your skin. Burn gels & sprays, aloe vera or after sun products help soothe sunburn. Don't pop [blisters](#). Consider covering itchy blisters with a wound dressing to reduce the risk of infection. Take over-the-counter pain-relieving medication, if necessary. Keep out of the sun until your skin has completely heal

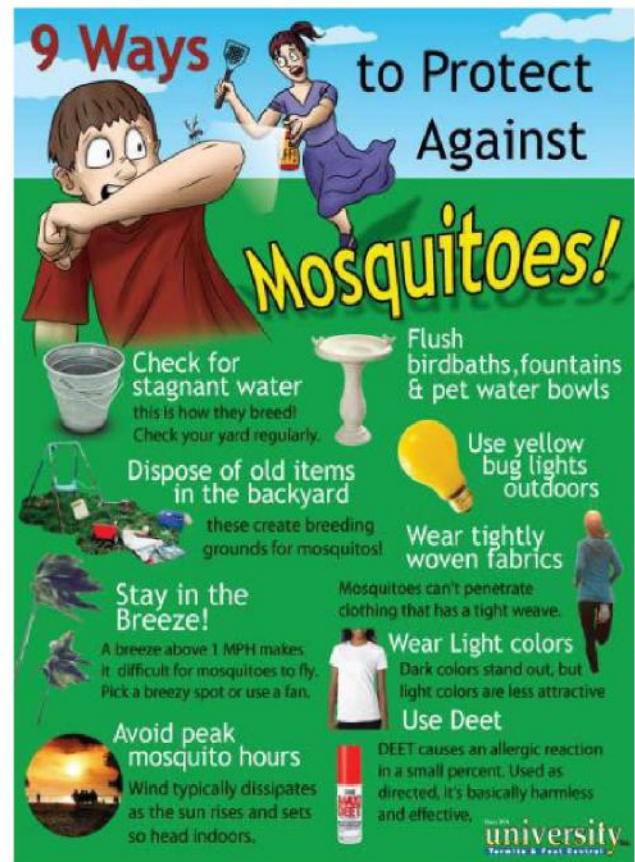


[https://stjohn.org.au/assets/uploads/fact%20sheets/english/Fact%20sheets\\_snake%20bite.pdf](https://stjohn.org.au/assets/uploads/fact%20sheets/english/Fact%20sheets_snake%20bite.pdf)

St. John's link to their snake bite fact & treatment sheet.

**Tinea** is a fungal infection found in moist, warm parts of the body. Types of Tinea includes athlete's foot, ringworm, and jock itch. Symptoms of tinea include a red flaky rash that can crack, split, and peel, plus blistering and itching. Our staff can help you choose the correct product to treat your fungal problems and help with lifestyle advice

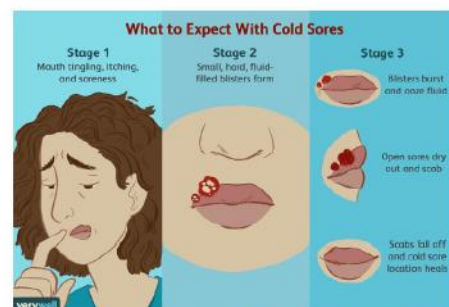
**Sunburn, dehydration, mosquitos, bites, stings, ticks & snake bites.** Prevention is the key to avoid these situations but here is some tips & first aid advice to help you through this summer.



- If bitten, wash the area with soap and water.
- Apply an ice pack for 10 minutes to reduce swelling and itching. Reapply ice pack as needed.
- Use an over-the-counter anti-itch or antihistamine cream to help relieve itching

**Bushman's, Moo Goo & Moov bite preventions stocked**

**Tick removal products stocked**



Do you suffer with cold sores? Our pharmacist & staff can assist you with treatment & prevention options.



**THE SWANSEA PHARMACY** phone 6257 8167



# THE PUZZLE PAGE

THIS WEEK'S CROSSWORD No 01.23 By Rob Gaspari

**ALL ANSWERS ON PAGE 7**



1		2		3		4		5	6	7		
								8			9	
10	11							12				
13				14	15		16					
17										18		19
				20							21	
22												23
			24		25		26		27	28		
29		30						31			32	
			33					34				
35		36						37			38	
39								40				
			41									

## CLUES

### ACROSS

- 1. The science of space and numbers. (11)
- 8. A short message (4)
- 10. One who steals (4)
- 12. About (5)
- 13. To change, especially to increase the speed of (3)
- 14. Sane (8)
- 17. The process of rusting (9)
- 18. Forcett (3)
- 20. Type of lights normally used for signage. (5)
- 21. We breathe it. (3)
- 22. Lubricate (3)
- 23. Egyptian god (2)
- 24. Belonging to thee (3)
- 26. Oriental continent (4)
- 29. The process of the wearing away of rock, soil etc by wind, rain etc. (7)
- 31. Property held for another (5)
- 33. Job; undertaking (4)
- 34. Ferret type creature (6)
- 36. Large woody plant (4)
- 37. Inner, inside (2)
- 38. To view a thing; observe (3)
- 39. Fasten (3)
- 40. To lay bare, take the covering off (5)
- 41. Taste or flavour; a liking (6)

### DOWN

- 1. Weighted pendulum used to keep time in music. (9)
- 2. Commonplace, trifling (7)
- 3. To give the right of voting for members of parliament (11)
- 4. To sell by highest bidder (7)
- 5. Without uniformity (12)
- 6. Currency made of metal. (4)
- 7. Layers (6)
- 9. Long cream filled pastry bun with chocolate topping (6)
- 11. To bewitch (3)
- 15. Consumed food (3)
- 16. Electrically charged atom (3)
- 19. Useless and unnecessary talk (7)
- 24. Russian king (4)

- 25. Yellow part of the egg (4)
- 27. Irish extremist group (3)
- 28. An Australian (coll) (6)
- 30. Aquatic river mammal (5)
- 32. To ooze, percolate (4)
- 34. To have a desire (4)
- 35. Half car/half truck (3)

## THIS WEEKS SUDOKU

		8		6				9
	2							
7				2				5
			7					9
	9	6				7	1	
	5				4			
	4			5				8
							6	
1				4		3		

## WORD SEARCH

### Bones

R	P	S	Y	C	H	O	L	O	G	I	S	T	B
I	N	E	E	T	U	T	I	T	S	N	I	R	J
S	E	E	L	E	Y	B	O	N	E	S	E	N	E
A	N	I	N	O	H	O	D	G	I	N	S	O	F
N	I	T	A	S	E	R	E	Z	N	N	N	T	F
N	L	E	Y	F	S	N	B	A	F	N	O	G	E
H	M	M	O	B	C	E	N	N	B	B	G	N	R
O	N	P	R	O	N	A	D	A	I	L	O	I	S
E	A	E	A	N	T	H	M	G	E	N	M	H	O
T	N	R	S	H	N	N	B	I	K	N	R	S	N
N	G	A	S	Y	S	T	O	E	L	O	O	A	I
L	E	N	Z	A	C	K	O	T	E	L	G	W	A
E	L	C	C	O	C	N	T	S	H	R	E	O	N
I	A	E	T	I	N	M	H	S	W	E	E	T	S

- SAROYAN
- SWEETS
- BOOTH
- WASHINGTON
- SEELEY
- HODGINS
- BRENNAN
- INSTITUTE
- GORMOGON
- BONES
- ANGELA
- PSYCHOLOGIST
- JEFFERSONIAN
- ZACK
- CAMILLE
- FBI
- TEMPERANCE

Play this puzzle online at : <https://thewordsearch.com/puzzle/131/>

# LOCAL SPORTS



## SWANSEA GOLF CLUB RESULTS

### 7TH JANUARY 2023 MONTHLY MEDAL EVENT - STROKE

Winner: G. Todd - 55  
 Runner-up: S. Dart - 60  
 Third: M. Skelly - 63 C/b  
 Nearest the Pins: 2nd/ 11th - S. Moore  
 4th / 13th - M. Clark  
 Super Pins: 7th /16th - R. Dance

### NEXT WEEK IS A CANADIAN FOURSOME EVENT

### WOMEN'S MID-WEEK - WEDNESDAY 4TH JANUARY 2023 JANUARY MONTHLY MEDAL - STROKE

9 Hole Competition - no competition due to insufficient players  
 18 Hole Winner: J. Darke - 61  
 Runner-up: A. Smith - 68  
 Nearest the Pins: J. Robinson - 5th /14th  
 A. Smith - 8 th /17th

### NEXT WEEK'S EVENT IS STABELFORD - ECLECTIC

### CHICKEN RUNS WEDNESDAY 4TH JANUARY 2023

Winners: P. Barker - 27 S. Kenny - 30 P. Morris - 31 T. Bond - 31 G. Todd - 31  
 Putts: J. Kennedy - 12

### FRIDAY 6 TH JANUARY 2023

Winners: K. Breheny - 29 C. Ring - 30.5  
 R. Dance - 33  
 Putts: S. Dart - 13

Results supplied by Kathy Dance

## LOOKING FOR THE COMMUNITY NEWS???

The distribution points for The Great Oyster Bay Community News

- In Swansea:**
    - IGA Morris' Store
    - IGA The Corner Store
    - Post Office
  - In Triabunna:**
    - IGA Supermarket
  - In Orford:**
    - IGA Supermarket
    - Post Office/Newsagency
  - In Coles Bay:**
    - General Store
  - In Bicheno:**
    - Post Office
  - In Buckland:**
    - Buckland Roadhouse
- or read it in full colour online at [www.gbcnews.weebly.com](http://www.gbcnews.weebly.com)

## OAKLANDS DISTRICT CRICKET ASSOC.

### THIS WEEKS SATURDAY, 17<sup>TH</sup> DECEMBER ROUND 2 T20 COMP

#### @ORFORD

9AM - ORFORD VS LEVENDALE  
 12PM - ORFORD VS MT. PLEASANT  
 3PM - MT. PLEASANT VS LEVENDALE

#### @RUNNYMEDE

9AM - RUNNYMEDE VS TRIABUNNA  
 12PM - TRIABUNNA VS DODGES FERRY  
 3PM - RUNNYMEDE VS DODGES FERRY

#### @BUCKLAND

9AM - BUCKLAND VS SWANSEA  
 12PM - SWANSEA VS NUGENT  
 3PM - BUCKLAND VS NUGENT

### NO RESULTS AVAILABLE

Go online for results

<https://www.playhq.com/cricket-australia/org/oatlands-district-cricket-association/bennetts-petroleum-odca-50-over-summer-202223/odca/af5f6b23/R2>



Note  
 Round 4 has been swapped with round 2

### NEXT WEEKS SATURDAY, 14<sup>TH</sup> JANUARY ROUND 4 T20 COMP

#### @LEVENDALE

9AM - LEVENDALE VS RUNNYMEDE  
 12PM - LEVENDALE VS NUGENT  
 3PM - NUGENT VS RUNNYMEDE

#### @MT. PLEASANT

9AM - MT. PLEASANT VS BUCKLAND  
 12PM - BUCKLAND VS DODGES FERRY  
 3PM - MT. PLEASANT VS DODGES FERRY

#### @TRIABUNNA

9AM - TRIABUNNA VS SWANSEA  
 12PM - ORFORD VS SWANSEA  
 3PM - TRIABUNNA VS ORFORD



## SWANSEA BOWLS CLUB Results



### Mid-Week Pennant Results Round 4 – Tue, 13<sup>th</sup> Dec 2022 v Scamander

Swansea def Scamander 51-33  
 Points: Swansea – 8 Scamander – 2  
 Vicki Whatley lt Rex Whittaker 21-22  
 Leigh Mayne def Vern Hodgetts 30-11

### Ladder

Team	Played	Won	Lost	Drawn	Points
Bicheno	4	3	0	1	35
St Marys	4	2	1	1	31
Swansea	4	1	2	1	20
Scamander	4	0	3	1	14

### Next Match

Swansea v St Marys – Tue, 10<sup>th</sup> Jan 2023 @ Swansea



Bowls?