

2022

FREE

GREAT OYSTER BAY Community News

Tuesday 04th Oct. 2022

Issue 39.2022



AFTER 154 YEARS MORRIS' GENERAL STORE AT SWANSEA IS CLOSING.

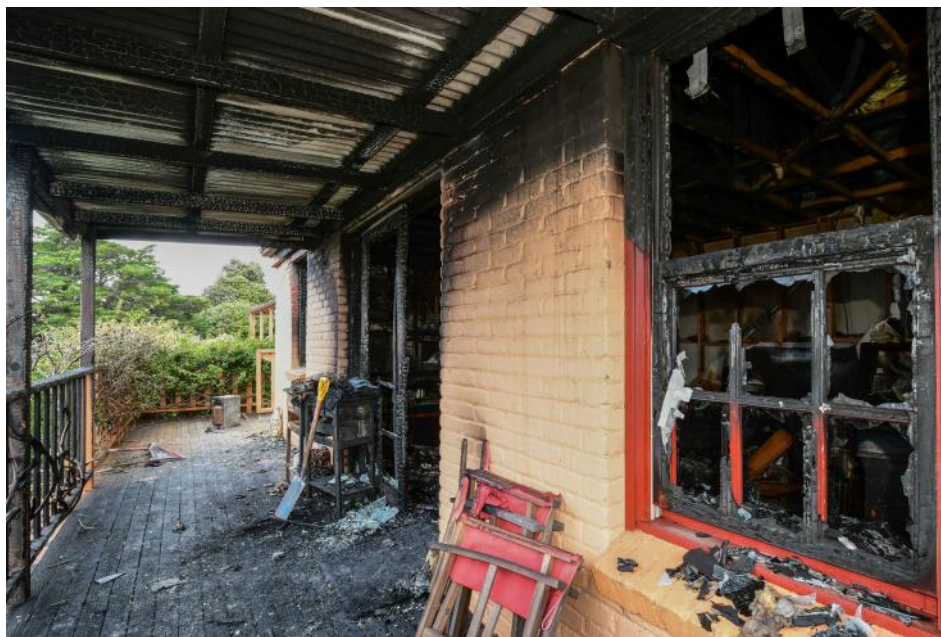
DETAILS & OFFICAL NOTICE ON PAGE 6

I probably did not notice everyone, we particularly WANT TO THANK Kelvin Jones, Bob Moore, Konrad Melling, all the Swansea volunteer firefighters, the Cranbrook Fire Brigade Boys, Gary Stoward and the SES Crew, Rick Jason , and all the others, The Triabunna Fire Brigade Volunteers, Policeman Craig, Suzanne, Nona and Emily for bringing food to the volunteers, Bianca Melling for chasing down a missing guest and the photography, just so many of you, and subsequently we have been overwhelmed by the many kind offers of accommodation, the amazing gifts and offers of help from Lisa and Peter from Swansea Beach Chalets, Suzanne Hickey and the Pharmacy staff, Kathy Dance for Pie and wine, Margaret Galbraith for the amazing shortbread, and many, many, many others.

We count ourselves as fortunate to live in such a caring community and fortunate that we have our Mews units to live in, we have saved clothes and many things. There have been losses but they are only things and whether they are irreplaceable or antiques or personal mementos they are still only things. People are irreplaceable, and no one neither guests, ourselves or the many volunteers were burnt, injured or harmed , the dogs are a tad confused as are we and we all smell a bit smoky ,and we are insured and the long recovery and rebuilding process has begun, on a positive note we hope to fix some of the issues we inherited with the property and come out the end with a better safer building, when we reopen.

Personally I see two lessons from the experience and that is turn off rotary dial microwaves at the power point and we have 4 unburnt ones going to the tip with their burnt out mate and even if you live in town have a fire safe or box or suitcase ready to go with the vital and important documents, etc, the advertising is directed to bush fires, in reality it should apply to all houses in the town or the bush. Stay Fire Safe, thank goodness we had both done fire training at Cambridge and had a fire plan and listen to the advice of our experienced Volunteers they care for all of us and we should be forever grateful that they do.

*Noel Stanley & Neal McDermott –
Meredith House*



MEREDITH HOUSE FIRE

On Friday the 23rd a fire broke out in our Flat at the rear of Meredith House caused by a microwave that was plugged in and the switch left on, the fire quickly took hold, destroying the upstairs floor of the owners flat and causing some considerable damage to the Main Kitchen and Laundry of the main house.

Thankfully no one was injured or hurt and the main heritage building is undamaged

except for smoke and water.

This outcome is due very much to our amazing Volunteer Fire Brigades and SES without them the outcome could have been very different. We especially and I think the whole community should be incredibly grateful for having such dedicated and well trained people in our community. The Tasmanian Fire Service Investigator confirmed what we already knew, that all the volunteers did a truly amazing, competent and professional job in stopping the fire and minimising the effect of the fire. They all did an incredible job and we truly would love to list them all but in the drama

OPENING TIMES**SWANSEA ONLINE
ACCESS CENTRE
Inc.**

swansea.oac@education.tas.gov.au

**GREAT OYSTER BAY
COMMUNITY NEWS**

gobcnews@gmail.com

Franklin St. Swansea (at library)

Phone: 0424 425 908

OPEN 10-3pm MON-FRICLOSED WEEKENDS
+ PUBLIC HOLIDAYS**SWANSEA
LIBRARY**

Franklin St. Swansea

(at Primary School)

Phone: 6257 8607

**OPEN TUESDAY & THURSDAY
9.30 am-12.30pm 1.15pm-4.15pm**CLOSED ALL OTHER DAYS
+ PUBLIC HOLIDAYS**BICHENO
LIBRARY**

78 Burgess Street (at Town Hall)

Phone: 6387 5609

OPEN TUES + THURS 10am - 2pm**WED 10am - 4pm****SAT 10am - 12noon**

CLOSED

FRIDAY/SUNDAY/MONDAY
+PUBLIC HOLIDAYS**OPENING TIMES****GLAMORGAN -
SPRING BAY
COUNCIL**9 Melbourne Street,
Triabunnaoperating normal hours of operation,
Monday to Friday
9.00am - 4.30pm**BUT with some changes, go to
[https://gsbc.tas.gov.au/services-facilities/
public-notice/](https://gsbc.tas.gov.au/services-facilities/public-notice/) for details****WASTE MANAGEMENT CENTRES
(WMC)****BICHENO WMC** - 2km south of the
town, on the Tasman Hwy.**COLES BAY WMC** - turn off Coles Bay
Rd, about 5kms from the township.**ORFORD WMC** - Tasman Hwy, just
north of Raspins Beach.**SWANSEA WMC** - top of Maria St.**All four WMCs are open from****SUMMER HOURS:****MON - FRI 2:30 - 4:30PM****CLOSED: SATURDAY****SUNDAY: 10AM - 2PM****WINTER HOURS:****From the 2 May 2022****MON, WED, FRI 2:30 - 4:30PM****CLOSED: TUESDAY, THURSDAY &
SATURDAY****SUNDAY: 10AM - 2PM****CLOSED: GOOD FRIDAY AND
CHRISTMAS DAY.****OPENING TIMES****SPRING BAY
ONLINE
ACCESS CENTRE
Inc.**Vicary & Melbourne Street
Triabunna, Tasmania 7190

Phone: 0472 511 136

springbay.oac@education.tas.gov.au

OPEN MON-FRI 10-2pm

CLOSED WEEKENDS

+ PUBLIC HOLIDAYS

**ORFORD
LIBRARY**

30A Charles Street

Phone: 6123 4039

OPEN**TUESDAY****10.00am-1.00pm 2.00pm-4.30pm****WEDNESDAY****10.00am-2.00pm****FRIDAY****10.00am-1.00pm 2.00pm-6.00pm**

CLOSED ALL OTHER DAYS

+ PUBLIC HOLIDAYS

SWANSEA RE-USE SHOPPE

4 Arnol Street

Opening hours:

Saturday - Sunday,

Tuesday - Thursday 10am to 3pm

CLOSED**MONDAY & FRIDAY**

We do not accept mattresses

or donations of obsolete technology

EFTPOS available

Contact Tracey Kean 0407 639 022**GREAT OYSTER BAY COMMUNITY NEWS TEAM**

The current Swansea Online Access Centre volunteers and our coordinator

Advertising, Stories & Copy Deadline: STRICTLY 12 NOON FRIDAY

The Great Oyster Bay Community News is printed on Mondays/Tuesdays.

Please ensure your ads/stories, etc. are in early to meet your advertising deadline times.

Advertisements costing **\$20 or less MUST BE PAID IN CASH** at the Swansea Online Centre prior to publication

Please provide adverts in PDF, JPG or Word format. Articles, letters and photographs of events are most welcome!

Phone: 0424 425 908 Post: PO Box 308 Swansea 7190 Email: gobcnews@gmail.com**Website: www.gobcnews.weebly.com****Facebook: www.facebook.com/greatoysterbaycommunitynews****Printed at the Swansea Online Access Centre, Swansea, Tasmania****Opening Hours: Monday to Friday 10am-3pm (Unless otherwise noted)**

Closed Sat & Sun + Public Holidays

Franklin Street, Swansea (next to the Library).

LETTERS to THE GOBCNews TEAM (editor)Please address your letters to the editorial team and please keep it under 200 words, and email to gobcnews@gmail.com.Letters to the editor must comply with our editorial policy, see disclaimer below. **Un-authored letters will not be published.****THE GREAT OYSTER BAY COMMUNITY NEWS** is a weekly newsletter containing articles of interest, community notices and advertising relevant to the Glamorgan Spring Bay Municipality. Advertising revenue is used to finance the printing of 600+ Newsletters, 50 weeks of the year. The Great Oyster Bay Community News is distributed to all major towns of the municipality weekly, free of charge to our readers.

The GOBCNews team

Disclaimer: The Great Oyster Bay Community News reserves the right to print any material which is designed to benefit or be of interest to the local community. Consequently, all views or opinions expressed in material published are solely those of the writer of that material and do not necessarily reflect the view or opinions of any persons associated with Great Oyster Bay. Community News, the Swansea Online Access Centre or Libraries Tasmania. The Great Oyster Bay Community News also reserves the right to edit or refuse to publish any material, that also may be deemed damaging, misleading or detrimental to our organisation or community or any person. Please refer to our Editorial and Advertising policies which are located on our website: www.gobcnews.weebly.com

OPENING TIMES

SWANSEA GENERAL PRACTICE

May Shaw, Wellington St. Swansea
Open Monday—Friday
9.00am-1.00pm 2.00pm-5.00pm
 For an appointment phone
6257 8205

SWANSEA COMMUNITY & MEN'S SHED

Opening Hours:
 Tuesday 10am to early afternoon
 (men & women's group)
 Wednesday 10am to 1pm (men's group)
 Wednesday afternoons (school pupils)
 Thursday 10am to early afternoon
 (men's group)
 Friday 10am to early afternoon
 (women's group)
Contact Colin Stevenson 0400 030 746

EAST COAST HERITAGE MUSEUM

22 Franklin Street, Swansea
 Open Mon to Fri 10am–4pm
Closed Good Friday & Christmas Day
www.eastcoastheritage.org.au

SWANSEA OP-SHOP

Franklin St. Swansea
 Trading hours:
Monday — Saturday 10 am—2 pm
Closed Sunday
 Donations most welcome
 Gloria Willis manager
 All Saints Op Shop for Anglican
 Parish of East Coast

SWANSEA POST OFFICE

Opening Hours
 MONDAY – FRIDAY 7:30AM – 6:00PM
 SATURDAY 7:30AM – 2:00PM
 Full newsagency & post office services
 available during opening hours
 including Saturday
 When the flags are out – we are open
PH.03 6117 0000

POP UP BOOK STALL

Opening hours: 10.30 – 3pm
 Days: Wednesday - Sunday
 plus Public Holidays
 Venue - Community Hall (former Council
 Chambers Building) Vicary St. Triabunna.
 All proceeds are donated to community
 organisations and activities.

Enquiries

Judy 0438571262;
Beth 0407571181;
Margaret 0438606446;
Caroline 0411895067
[www.facebook.com/](http://www.facebook.com/PopUpBookStall)
PopUpBookStall;
 email popupbookstall@hotmail.com



OPENING TIMES



SWANSEA RSL SUB - BRANCH INC.

WINTER OPEN HOURS BAR

Monday & Tuesday.....3pm
 Wednesday & Thursday.....2pm
 Friday & Sunday.....12pm
 Saturday.....11am

BISTRO

Wednesday - Saturday
 5.30pm -8pm
 To make a booking please call
(03) 6257 8188
 or pop into the RSL to reserve a table.

CLUBS & GROUPS

DOLPHIN SANDS COMMUNITY ASSOC. (DSCA)

Email: dscsca.7190@gmail.com
 Website: dscommunity.org.au
 Mail: PO Box 133, Swansea, 7190

SWANSEA BRANCH CWA

meets 2nd Wednesday of the month.
 New members always welcome.
 Craft days alternate months.
 Contact **0402 043 621** for details

CRANBROOK CRAFT GROUP

Every Wednesday
 10.30 am at
 Cranbrook Hall. Cranbrook.
 Contact **Edith 0409 216 793**



SWANSEA EXERCISE GROUP

held at Swansea Golf Club
 Mondays 8:45 for 9 am.
 (currently full)
 Followed by **Qigong** at 10 am
 Enquiries:
0429 178 076 / 0448 649 765
(re Exercise Group) or
0448 649 765 (re Qigong)



SWANSEA TENNIS CLUB

is open to all members
 Available for hire.
 Contact
Kathy Dance 0439 732 496.
 All new members welcome.



SWANSEA MODEL YACHT CLUB INC.

Sailing, **weather permitting**, every
 Monday 10.30 am until 2.30 pm.
 All interested parties and spectators
 welcome. Sailing is at the Kelvedon
 Dam south of Swansea.
 Inquiries to Cheryl
 on 0419393774

CLUBS & GROUPS

SPRING BAY WALKERS

Every Thursday morning,
 contact **Peter Hutememier**
6257 7506.

www.triabunnavillage.com.au/springbay-walkers

GLAMORGAN SPRING BAY HISTORICAL SOCIETY INC.

Are you interested in local History? Then
 consider joining the Historical Society.
 Currently our office is open
 Tuesdays 10am to 4pm
 22 Franklin Street, Swansea
<https://glamorganhistory.org.au/>
Phone: 03 6256 5077

GLAMORGAN SUICIDE AWARENESS NETWORK

Contact us on Facebook or Email

- www.facebook.com/glamorganSAN
- glamorganspn@gmail.com
- Crisis Life Line 24/7: 131114
- Support Life Line Tas: 1800 984 434

Everyone needs someone to talk to

THE SWANSEA HOPE CLUB CUPPA & CHAT GROUP

1st & 3rd Monday of each month
 from 2pm onwards
 @ the Community Hub
 4 Arnol St Swansea
 Enquires contact Steve, Linda
 0458 959 820

Look forward to seeing you there.

LONELINESS GROUP LET'S GET TOGETHER & TALK ABOUT IT.

Hi my name is Kath, and I am organising
 both a ladies group and also a gents group
 to talk about loneliness and isolation. If
 you are interested please text leaving your
 interest so I can organise a time & date
 within the next few weeks.

KATH

0468 998 546 (TEXT ONLY)

*These groups is not a replacement for your
 mental health worker or your GP.*

SPRING BAY POTTERS

The Spring Bay Potters Group
 situated in specifically built
 facilities at The Village in
 Triabunna, the Group regularly meet for
 classes and potting on;



Wednesdays & Fridays
10.00am to 1.00pm.

As well as tuition, clay, tools, glazes etc.
 are provided for a cost.

Peter Hüttemeier

IMPORTANT

Please keep all your community notices up to date by contacting us on
Phone: 0424 425 908 or Email: gobcnews@gmail.com

CLUBS & GROUPS

TAP DANCING CLASSES

Swansea Town Hall on Mondays
at the new time of 4.30pm
All enquiries phone
Janelle 0437 264 332

SWANSEA & DISTRICT GARDEN CLUB

Meetings held 2nd Thursday of each month
2pm at Swansea Golf Club

**ON HIATUS UNTIL
FURTHER NOTICE**

swanseadistrictgardenclub
@gmail.com



THE ORFORD & DISTRICT RIDING CLUB INC.

The last weekend of every
month between 10.00am & 3.00pm
57 Inkerman Street Triabunna
For info. Phone: 0427796096
E-mail: sandmgraham@bigpond.com
Facebook— Orford and District
Riding Club Inc.

NEW MEMBERS WELCOME


FREYCINET VOLUNTEER MARINE RESCUE

Meets 7pm, 3rd Tuesday each Month
VMR Boatshed,
76A Maria Street, Swansea
Visitors and new members welcome
Enquiries: 0400 329 973

GKR KARATE

Karate classes starting on Thursday
at the Triabunna District School.
The class starts at 12 noon.
For further details contact
Nathan Jacobs 0482 471 443

NATIVE ANIMAL RESCUE

 Rescue, rehabilitation and
release of native wildlife.
Also treating wombats
with mange in our Municipality on behalf
of Wombat Rescue.
Contact Marcia 0448714419

CLUBS & GROUPS

SWANSEA MEN'S PROBUS CLUB

Meeting starts 10am,
guest speaker 11am, usually
followed by BBQ
every 2nd Tuesday of the month
at Swansea Golf Club

DOLPHIN SANDS ART GROUP

King's Gallery
22 Cambridge
Delaware

Friday
 10.00am
 1.00pm
 Free from gallery

**CLOSED
FOR WINTER**

Contact Laurie
0499 193 821

MAHJONG & SCRABBLE

1.30 pm every Monday
at Swansea Golf Club.
Contact Lyn Lyne 0438 578 208

CHURCH NOTICES



East Coast
ANGLICAN
PARISH

EAST COAST ANGLICAN

Please join us for church
every Sunday
10am Swansea (10 Noyes St)
3pm Triabunna (1 Franklin St)
6257 3321
www.eastcoastanglican.church
Swansea - 10 Noyes St
Triabunna - 1 Franklin St
Bicheno - Corner Burgess St &
Morrison St
Woodsdale - 2265 Woodsdale Rd

ST. ANDREWS UNITING CHURCH SWANSEA

will be holding services on
the 1st & 3rd Sundays of
each month at 10am.
Everyone is invited to attend.
All Welcome

COMMUNITY NOTICES

SWANSEA COMMUNITY ROOM

with kitchen facilities. Available for hire
Contact Heather Groombridge
0416 200 172

MILITARY COMPENSATION & REHABILITATION ADVOCACY SERVICES

are now available at the Swansea RSL
for ex-service, current serving and family
members of the ADF. Contact
Steven Kenny 0438 060 047

THE VILLAGE

20 Melbourne Street, Triabunna
Community Market third Sunday of each
Month 10.00am to 1.00pm. Large range
of stalls and activities. Sell from your car
boot, charge applies. Large range of com-
munity activities during the week,
for details see:
<http://triabunnavillage.com.au/>
[https://www.facebook.com/
VillageTriabunna/](https://www.facebook.com/VillageTriabunna/)

COLOUR ISSUES for 2022

Issue 01 January 11
ISSUE 13 APRIL 05
Issue 26 July 05

NEXT

ISSUE 39 OCTOBER 04
ISSUE 50 DECEMBER 20

DOGS

*Dogs barking?
Are they a problem?
All complaints
Please contact
Glamorgan-Spring Bay Council*

FOUND (SWANSEA)

Ring found in
Wellington Street, Swansea
Early August
Phone
0408369213

MEALS ON WHEELS SWANSEA ROSTER

Date	2022	Name
Wed	05 Oct	N Hickey
Thu	06 Oct	A Simson
Fri	07 Oct	A & R Smith
Mon	10 Oct	T Gray
Tues	11 Oct	P & D Cardno



READ, SING, PLAY & CREATE!

WHERE?
SWANSEA PRIMARY
SCHOOL LIBRARY
WHEN?
EVERY FRIDAY
DURING SCHOOL TERMS
9.30-10.30 AM
COST?
FREE
WHO IS IT FOR?
YOUNG CHILDREN (0-4)
AND THEIR FAMILIES
WHAT TO EXPECT
PARENTS, TEACHERS
AND CHILDREN PLAYING
ALONGSIDE EACH OTHER, HAVING FUN AND LEARNING
TOGETHER.



FOR MORE INFORMATION, PLEASE CONTACT THE SCHOOL.

ADVERTISEMENT



Brian Mitchell MP

Your Federal Member for Lyons

Need help with Medicare, Pensions, NDIS or other federal matters? Please feel free to contact me at my Northern Midlands office on (03) 6398 1115 or email me at Brian.Mitchell.MP@aph.gov.au



Authorised by Brian Mitchell MP (ALP, Tasmania)
53B Main Road Perth, Tasmania 7300

Are you a member of a non-profit organisation? My office can help provide information about grants and other funding opportunities.

COMMUNITY NOTICES

TASMANIAN/AUSTRALIAN NATIONAL CLASSIC SCOOTER RALLY 2022

A group of approximately 50 scooter riders will arrive in Swansea on **Saturday 29th October**, for a two-night stopover. On Saturday night there will be a private function at the Swansea Town Hall, 5.30pm to 11.30pm.

SUNDAY 30TH OCTOBER

During the day, some members of the group will go for a short ride to Bicheno/ Coles Bay.

On Sunday afternoon from **12noon to 3.30pm**, there will be a **Show and Shine** display of the classic scooters to be held at the Swansea Recreational Oval. There will be live entertainment, along with food stalls and market stalls.

On Sunday night there will be a private function at the Swansea Town Hall, 5pm to 10.30pm.

MONDAY 31ST OCTOBER

There will be a send off from the Swansea Recreational Oval at approximately **9.30am**.

*Market stall holders required.
Please contact Jo on 0419 949 371 to book a stall.*

GARDEN CLUB MEETING

Garden Club will hold an informal meeting on the 20th October at 2.00pm
21 Shaw st. Swansea
Enquiries 0417012054
Susanne Ellingswalsh

LETTERS TO THE EDITORIAL TEAM

Dear team

Don't you just love it when local council elections come around and you see words like GOOD GOVERNANCE, INTEGRITY AND COMMUNITY CONSULTATION, banded about by candidates vying for your vote and you sit back and chuckle to yourself because you are aware that the behaviours and actions of these people do not reflect these ideals.

For clarification: -
GOOD GOVERNANCE -this is a difficult one to define but put simply means that processes and institutions produce results that meet the needs of society while making the best use of resources at their disposal. It also covers the sustainable use of natural resources and the protection of the environment. Principles of good governance include independence, openness and transparency, accountability, integrity and clarity of purpose.

INTEGRITY – the quality of being honest and having strong moral principles.

COMMUNITY CONSULTATION -again a difficult one to define but it is a participatory process that underpins genuine community development. It enables communities to articulate their own concerns, and identify the appropriate responses and solutions to problems that affect them.

If I can find a candidate that genuinely holds true to these principles then I will happily vote for them.

Janet Beswick, Dolphin Sands

LETTERS TO THE EDITORIAL TEAM

Dear team

RE. Pension Remission on rates payable to GSBC.

I acknowledge that the State Government sets the amount of Pension Remission via the State Revenue Office.

Having said I believe that it is, first and foremost, the responsibility of councillors to act in the best interests of the ratepayers.

Even a cursory scan of the average pensioner's rates payable over the last two years clearly shows that the "Pension Remission amount" has not fairly reflected the huge increases in the overall rates for GSBC ratepayers.

The problem seems to stem from the fact that the State Government sets The Pension Remission as a "FIXED AMOUNT" so in reality no matter how much your rates increase by your Pension Remission does not increase relative to the overall increase !!!!!

So my question to GSBC, and potential new councillors, are you prepared to act in the interests of a significant number of your ratepayers and request that the State Government increase the Pension Remission amount for GSBC Pensioners.

A simple case to argue would be for the Pension Remission to be based on a "Percentage" of the total rate payable, (starting with taking into account the last two years rate increases)!!!!

Now that would be looking after the interests of your constituents and their ability to pay their rates.

Continued on page 9

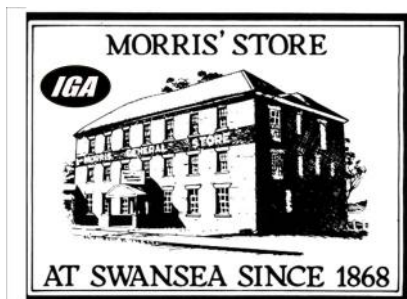


east coast tasmania



EAST COAST WINE TRAIL

Advertising, Stories & Copy Deadline:
STRICTLY 12 NOON FRIDAY



MORRIS' STORE

13-15 Franklin Street
SWANSEA TAS 7190
ABN 25 593 913 089

e-mail morris-store@bigpond.c
www.morris-swanssea.com.au



30th. September 2022

IMPORTANT MESSAGE TO SWANSEA RESIDENTS

It is now expected that the business operated by the Morris family since 1868

WILL CLOSE : PERMANENTLY

On Friday 28th October 2022

We request that all Morris' Local Shoppers points be redeemed before 28-10-22

We would like to thank the community for their support over the years, through highs and lows and hope that in turn we have provided some service to the community.

A new company (East Coast Supermarkets Pty Ltd) has signed a contract to purchase all the stock, plant and equipment from the Morris family and, subject to meeting all the terms of the contract and settlement in accordance with the contract, will take possession on 1st. November 2022.

It is expected that East Coast Supermarkets will announce a date to re-open in due course.

East Coast Supermarkets will also be determining their own trading terms and conditions for future operations.

All of the loyal staff who have supported the Morris family over the years have been offered ongoing employment with the new company on at least comparable terms and conditions.

We sincerely thank all these staff both past and present for the dedication, support and service and wish them all the best for the future.

Why are we closing.

Well, we are old and tired.

We could talk about the difficulties of operating an old fashioned business in the modern world,

We could talk about the seemingly never ending increase in pointless and duplicating "Red Tape"

We could talk about the discrimination against small business, particularly small family business by all four levels of governance.

We could talk about the difficulties of getting the stock we need, at a price which is fair.

We could talk about how, for all practical purposes, two multinational companies have been allowed to dictate to Australians, not only what they are allowed to buy but also how much they have to pay for it.

We could talk about

Never Mind

When its all said, we are old and tired, physically and mentally we can no longer provide the standard of service which we believe is necessary.

NO CONDOLENCES BY REQUEST.

A.J. & P. J. Morris.



Delivering from Hobart to Swansea & everywhere inbetween

Call Andrew Moore

0457 711 108

downandbackdeliveries@yahoo.com.au

GREAT OYSTER BAY COMMUNITY NEWS RATES

SIZE	Price per single issue	
	NPClubs & Personal	Business
1 (6x3cm)	\$6	\$7.50
2 (6x6cm)	\$12	\$15
3 (6x9cm)	\$18	\$22
4 (6x12cm)	\$24	\$30
1/4 page	\$36	\$45
1/3 page	\$48	\$62
1/2 page	\$66	\$86
Full page	\$102	\$112

Discounts apply on multiple issues

DETAIL DENTURE CLINIC Triabunna

New & old patients welcome

- Implant dentures
- Full dentures
- Partial dentures
- Acrylic based
- Metal based
- Veteran Affairs provider
- Custom mouthguards
- Relines
- Same day repairs
- Health fund rebates



15 Vicary Street, Triabunna

Open every Friday by appointment **Phone 6234 4258**

Roberts and Partners Lawyers

**Wills & Conveyancing
Legal Advice Commercial
Litigation**
1 Stanton Place,
Cambridge

(03) 6248 4144

admin@robertsandpartnerslawyers.com.au

**Insects-R-Gon
PEST CONTROL**

Safe and Effective Treatments
for all of your Pest Problems

Chris Green & Craig Andrews



Licensed, Insured & Reliable

6243 9865, 0432 210 004

www.insectsrگون.com.au

email: insectsrگون1@gmail.com

**DO YOU NEED
PHOTOCOPYING**

Large print runs at very reasonable prices. B&W or colour, A4/A3 size.

Standard or in booklet form.

We can also print/scan/email your important documents.

Discounts for SOAC members



**SWANSEA
ONLINE
ACCESS
CENTRE
INC.**

Franklin Street, Swansea, 7190.

Next to the Library

Phone: 0424 425 908

Email: gobcnews@gmail.com

B	O	U	R	G	E	O	I	S	P	U	P
A	A	A	S	P	A	A	A	A	A	A	A
S	O	T	T	I	S	H	E	S	T	E	R
E	V	I	L	E	S	A	L	T	A	A	A
B	A	L	I	N	U	T	R	I	E	N	T
A	T	E	N	T	A	M	R	A	A	A	A
L	I	E	N	I	G	M	A	N	X	X	X
L	O	O	A	I	T	P	I	A	A	A	A
N	A	T	A	L	N	O	R	D	I	C	A
B	T	A	A	A	A	R	T	A	A	A	A
E	T	H	A	N	O	L	E	D	O	A	A
L	I	L	E	U	A	M	E	N	D	S	A
T	E	M	P	E	R	A	T	U	R	E	P

9	6	3	1	4	2	5	7	8
1	8	5	7	9	3	6	4	2
2	4	7	8	5	6	3	9	1
4	9	2	3	6	7	8	1	5
5	7	8	9	2	1	4	3	6
3	1	6	5	8	4	7	2	9
8	5	4	2	7	9	1	6	3
6	3	9	4	1	5	2	8	7
7	2	1	6	3	8	9	5	4

C	N	A	R	E	W	O	L	F	I	L	U	A	C
A	H	C	T	S	W	P	A	A	I	A	A	L	R
B	A	A	U	W	U	U	P	U	B	G	T	I	E
B	R	S	R	E	G	M	P	I	C	A	R	Z	U
A	U	S	N	D	P	P	K	G	E	B	E	U	C
G	G	A	I	E	A	K	T	N	L	A	G	C	I
E	U	V	P	R	R	I	C	T	E	T	N	C	H
U	L	A	E	R	S	N	A	E	R	U	I	H	S
A	A	P	T	L	N	G	R	E	Y	R	G	I	I
C	A	S	A	E	I	U	R	B	D	H	L	N	D
A	O	U	K	E	P	B	O	G	A	E	T	I	A
E	A	P	C	K	P	O	T	A	T	O	E	N	R
P	R	I	L	O	C	C	O	R	B	E	E	S	K
N	O	R	T	W	R	S	P	I	N	A	C	H	A

This weeks PUZZLE PAGE answers
NO CHEATING NOW!

SPRING FLOWER FESTIVAL AVOCA MEMORIAL HALL

The Avoca Memorial Hall was the venue for the Avoca Spring Festival on Saturday 1st October.

The first since the Covid epidemic started, it is a fundraising event to assist in the maintenance and running costs of the historic Hall.

The Hall was filled with a variety of market stalls with many hand-made items including beeswax candles, soaps, jewellery, potted plants, artwork and hand sewn goods.

The cooks in the Kitchen, Leesa, Vicki, Helen and Louise baked and prepared Devonshire Teas all morning.

Outside the BBQ cooks supplied hot food, all the while entertained by musicians Doug Loane and Lance Petri.

The special event on the day was the Flower Show also Art and Photography exhibits and Children's craft corner. Congratulations to all who participated and displayed their lovely flowers, potted plants, works of art and photography for everyone to see. Shirley Freeman was very successful, winning first prize for her floral arrangement, single flower and photograph.

A delightful morning and always a great social happening for a small town. It is hoped the success of the day will lead to more events like this in the future for the Memorial Hall.

*Story & photos by Deb Blundell
our roving reporter*



Trish Beadel from Avoca, earrings & jewellery



Meg Barber from Campbell Town, Barber's Bees and Berries.



Heather Lewis, Campbell Town, potted cottage plants.



Jill selling her grand daughter Olivia's hand painted cards.



Young Isaiah selling his Pop Murray's wooden crafts .



Vicki and Angie enjoying Devonshire tea and admiring the Artwork exhibits.



Sylvia Winton from Perth, maker of hand-bags, aprons and quilts.



Dearne Smith from Swansea, paintings & cards.



Shirley Freeman and her first prize flower arrangement.



BBQ cooks Jay and Michelle

Photos continued next page



Scone baking for Devonshire Teas in the kitchen.



LETTERS TO THE EDITORIAL TEAM

Continued from page 5

For your information I have provided detailed information, of my rate increases and Pension Remission amounts from the last two years, to politicians Messrs. Jane Howlett and Brian Mitchell they seemed to have listened carefully but as yet no reply.

Like our erstwhile mayor and deputy mayor we have been ratepayers in GSBC for over forty six years and payment of our rates has never such an onerous financial task until the last couple of years.

Len Evans
Swansea

Dear team

In comparison to State or Federal elections the current leadup to our Council elections cannot be quieter. Is it because most of the candidates just want to slip in quietly? The few pamphlets I have received always tend to amplify the candidate's honesty and love of the East Coast. That is not good enough for someone who wants to lead and govern within the mandated boundaries of Council. Yes, we all are honest and love the East Coast but lets us get down to brass tacks. I challenge all incumbent candidates to publish on this paper how he/she voted on a list of all major issues directly affecting all citizens of this Shire and any reason for such a vote. For candidates that are not incumbent councillors how would you have voted on these major issues. Can I suggest only some of the issues I have in mind, rates increase, Tassal water and Cambria. I sincerely hope to see some honest replies to my challenge.

Pedro Camus
Swansea

Due to the Electoral police some of your "Letters to the Editorial Team" may fail to be published, we apologies if this occurs.

Rob Gaspari Desktop publisher



FOR GOOD GOVERNANCE, INTEGRITY AND COMMUNITY CONSULTATION
RE-ELECT CHERYL ARNOL
AS A GLAMORGAN SPRING BAY COUNCILLOR

VOTE 1
CHERYL ARNOL FOR COUNCILLOR

VOTE 1
CHERYL ARNOL FOR MAYOR

Written and authorized by Cheryl Arnol
10 Aubin Court Orford

**JOBS, HEALTH,
COMMUNITY**



Rebecca White MP
Labor Member for Lyons

rebecca.white@parliament.tas.gov.au
6212 2225

Authorised by REBECCA WHITE,
33 COLE ST. SORELL



ADVERTISEMENT

Guy Barnett
Liberal Member for Lyons MP

Listening, Caring,
Delivering.

Liberal Party of Australia

15 High Street, New Norfolk TAS 7140 (03) 67012170
GuyBarnettMP | guybarnett@dpac.tas.gov.au
Authorised by Guy Barnett, 15 High Street, New Norfolk, TAS 7140.

2022 LOCAL ELECTIONS

Elections, conducted by postal ballot, will be held to fill councillor, mayor and deputy mayor positions for all 29 local councils state wide. Each council has between 7 and 12 councillors (including a mayor and deputy) who will be elected for a four-year term of office.

Recent amendments to the *Local Government Act 1993* mean that voting in local government elections is now compulsory for all electors on the State roll.



Consultation is important to our residents and ratepayers. Council has listened at Community Connects but have they really heard what our communities are saying? It is past time for Council to hear what our communities are saying about our performance, the impact of rate rises and the myriad of other matters that affect our people.

In terms of shared values on community consultation, Cheryl Arrol and Michael Symons are on the same page! A strong Mayor and Deputy Mayor team will be paramount in achieving change so after your preferred vote for Councillor please then

VOTE 1 – ARNOL (MAYOR)/ SYMONS (DEPUTY MAYOR)

GETTING GSBC BACK TO BUSINESS!

Written and authorised by Cheryl Arrol 10 Aubin Court Orford

ARNOL PROJECTS

CONTAINER CABINS -
OUR DESIGN OR YOURS



Dale Arrol - 0417 332 988

arnolprojects@bigpond.com

Phone/fax: 6257 8288

41 Maria Street, Swansea.

- Mobile welding
- Aluminium-stainless steel
- Structural & general engineering
- Stainless wire handrails
- Building decks & sheds
- Trailer, machinery repairs
- Wood heater repairs
- Steel sold, cut to length

Qualified trade persons

NO JOB TOO BIG OR SMALL

ABN 74 648 177 056

Carole McQueeney FOR COUNCILLOR VOTE 1

A new voice on Council Supporting stronger Health Services

I am an Orford resident. I love the east coast and the community within it. I have spent 35 years in the healthcare and education areas, some 25 years of which has been managing healthcare and services, including in rural areas. I am:

- a registered nurse, most recently managing COVID response planning
- experienced in the design, funding, accreditation and regulation of health services
- a registered teacher, having worked in years 7-12 and VET areas
- a lifelong volunteer, from Scouts to Adult Literacy
- a qualified company director with the Australian Institute of Company Directors
- on the Board of both *Disability Voices Tasmania* and *Tasmania's Postgraduate Medical Education Council*
- Postgraduate qualifications in public administration, vocational training, information systems and health economics
- Hard working and committed

Please contact me: Email: Carole.McQueeney@hotmail.com • Mobile: 0404 488 203

Authorised by Jo Nichols, 48 East Shelley Road, Orford 7190



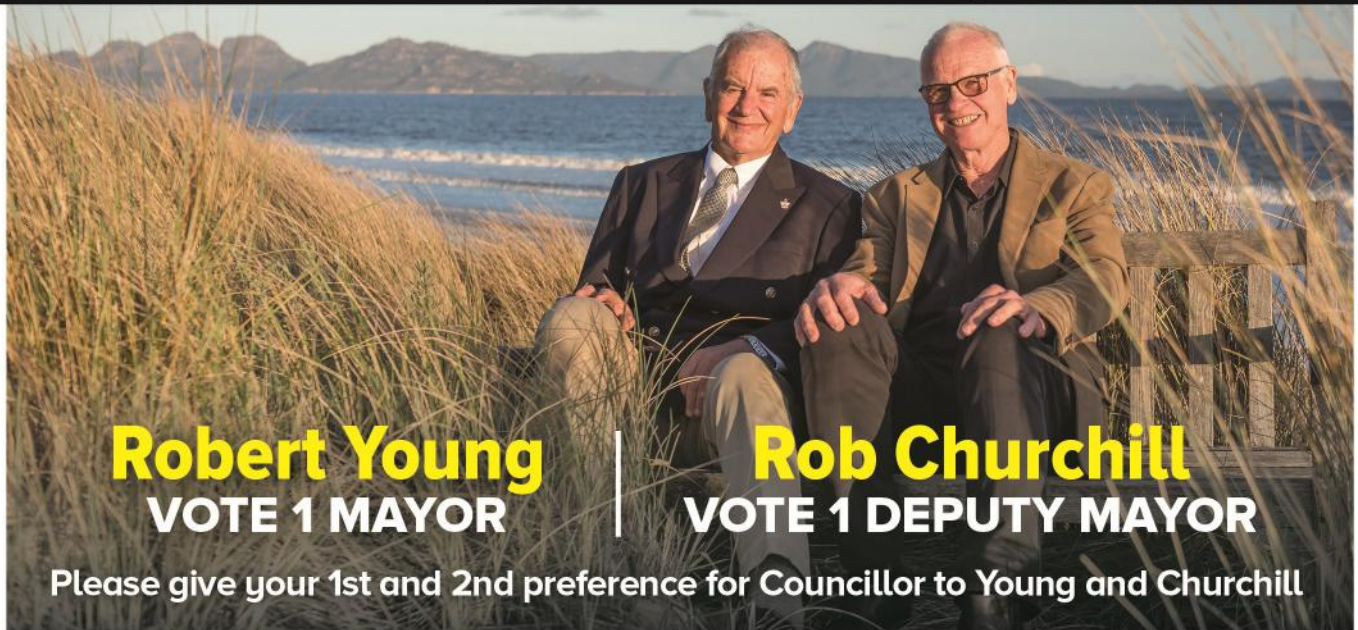
MY FOCUS ON COUNCIL

Integrity and enthusiasm
East coast health services
Responsible development
and growth
Understanding community
concerns
Good governance
Core services delivery

HAVE YOU ANY STORIES OR ARTICLES YOU WANT TO SHARE?
PLEASE SEE OUR [WEBSITE](http://WWW.GOBCNEWS.WEBLY.COM) FOR DETAILS. WWW.GOBCNEWS.WEBLY.COM

Online in colour every week at www.gobcnews.weebly.com

Experienced leadership team for Glamorgan Spring Bay Council



Robert Young
VOTE 1 MAYOR

Rob Churchill
VOTE 1 DEPUTY MAYOR

Please give your 1st and 2nd preference for Councillor to Young and Churchill

Robert Young and Rob Churchill are standing for re-election to Glamorgan Spring Bay Council

Why re-elect us to Council?

Your Council is performing well. Hard decisions have been made. Council now complies with the Local Government Act, is financially stable, and administered by outstanding staff – but there is still work to do. We want to continue serving our community.

What we care about:

- Delivering effective local government that enables the entire community to thrive
- Listening, consulting and communicating
- Delivering core services
- Ensuring finances are well-managed and advocating for fair distribution of government grants
- Advocating for appropriate, sensible development informed by open, public scrutiny
- Protecting and celebrating GSBC as a special place in which to live, work and visit.

Robert Young

As your Mayor the past 2 years, I have focused on leading an open and consultative Council that puts the well-being of the community first. A Tasmanian lawyer for 45 years and a company director, I've brought to the role of Councillor and Mayor expertise relevant to effective local government: business, finance, legal compliance, planning and good governance. I would like the opportunity to continue serving my community as your Mayor.

Rob Churchill

A rural veterinarian of 40 years and Councillor the past 4, I have applied my knowledge of business, finance, management and government advisory roles during a critical period of change for GSBC. I have served on Council's Audit Panel; East Coast Tourism Board; Tasmanian Animal Welfare Advisory Committee. As Councillor and Deputy Mayor I will work to ensure the East Coast is protected and developed with sensitivity while providing for the needs of its people.



FREE-RANGE PORK
 PIG-IN-A-BOX BUTCHERED,
 PACKAGED, DELIVERED
25KG HALF PIG \$345
 CALL 0459 080 201 OR
 VISIT LONGNAMEFARM.COM.AU

Timber Joinery
 WINDOWS • DOORS • GATES •
 STAIRS • MACHINING & MOULDING •
 ALL PROFILES
 **Peter 0447 758 116**

SWANSEA MARKET
 This Saturday, 8th Oct
 early - 1pm
 at the Town Hall.



Come, browse, and enjoy a morning tea with your friends.
Phone: 0438 74 8545



KINGS
 FINE ART GALLERY
 & TEA ROOM
 22 Cambria Drive
 Dolphin C/-
CLOSED
 UNTIL 3RD NOV. 2022
 10am-5pm
Tuesday to Monday

IT WILL SOON BE TIME TO PLANT OUT YOUR SUMMER GARDEN (if it ever stops raining!)



Next Swansea Market October 8th

SALE SUMMER VEGGIE SEEDLINGS

TOMATOES HERITAGE VARIETIES

- CAPSICUMS
- EGG PLANT
- BASIL
- CUCUMBERS
- STRAWBERRIES

All tested to grow well in Swansea conditions.



Pray for Ukraine!

eyelines
 OPTOMETRISTS
 Your professional Eyelines Optometrist is visiting Swansea, Bicheno and Triabunna very soon please call us.
 To make an appointment call the Eyelines Team at Sorell on **6265 3011** we will tell you where to see us.

SKU
 podiatry

Swansea & Bicheno
 visiting every week

Do your kids complain of
 Sore feet or Leg Pain?
We Can Help!

No Referral Necessary
 Accepting Private Residents, DVA Card Holders and Medicare Referrals
(03) 6732 7838

Now open in Sorell!



Island Dental




Dr Girish Sasidharan



Dr Sophie Lomas



Dr Sam Yeoh

Shop 6 / 35-37
 Gordon St
Sorell

&

193-195
 Elizabeth St
Hobart

Contact us!

P 6231 2356
 E info@islanddentalhobart.com.au
 Book online at islanddentalhobart.com.au or scan this QR code:





SWANSEA PROPERTY MAINTENANCE

- Lawn & edging — ride on & mower
- Gardening & pruning
- Small property slashing — All terrain ride on
- Property clean ups
- Window cleaning
- Flu & wood heater cleaning
- Gutter & roof cleaning
- Pressure washing
- Waste removal
- Mini Excavator work 1.7t
- Retaining walls
- Tree trimming
- Window & door repairs
- Shower screen
- Handy man service for all types of repairs

CALL STUART FOX
0409 435 991

8 Wedge Street, Swansea TAS 7190 ABN 34161234295

JAWS MAINTENANCE & SERVICES

- Home and Property Maintenance
- Landscaping
- Gardening
- Lawn Mowing and Brush Cutting
- Rubbish Removal
- Property Hazard Reduction/clearing

No job too big or too small....



Contact us today to make your home JAWSome!!

Joshua Wickham
0438 866 735
ABN: 20 506 110 168
SWANSEA

jawsmands@gmail.com
Find us on Facebook:
@JAWSMandS

- GLASS REPAIRS
- WINDOW, DOOR REPAIRS
- SECURITY DOOR, SCREENS
- SHOWER SCREENS
- FLY SCREENS
- GLASS BALUSTRADES
- SPLASH BACKS & MORE

SERVICING THE EAST COAST

GLAMORGAN GLASS & GLAZING

NATHAN
0400516069
PONTYPOOL
7190
nathan.ede2@bigpond.com

TAX RETURNS



East Coast Tax Accounting

SUZANNE WHYTCROSS

0400041710

suzanne@ectax.com.au

COMMUNITY SERVICE POSTER - PLEASE DO NOT REMOVE

WE CAN HELP. with Reading Writing & Maths

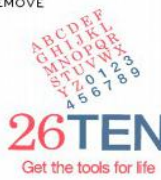
CONFIDENTIAL

Help a Family Member, New Australian or a Friend
This is a free service, privacy is guaranteed
ONE ON ONE support - we want to help!

FREE 1 on 1 support

1300 00 2610

Supported by Swansea Online Access Centre 03 6257 8806



Get the tools for life



EASTCOAST TREE SURGEON

ALL ASPECTS OF TREE WORK

32 YEARS OF EXPERIENCE

COUNCIL APPROVED CONTRACTOR

**LIVING & SERVING THE WHOLE OF
THE EAST COAST**

BASED IN SWANSEA

CALL: HUGH WILSON 0431 755 300

Tim & Lorraine Vincent
Earthmoving & Landscaping

SWANSEA BOBCAT

swanseabobcat89@gmail.com
0427 794 248

89 Gordon St
Swansea 7190

FOR HIRE

- Skid steer bobcat—4 ton
- Excavator & Tipper
- Slashing/clearing/
driveways
- House sites/landscaping
- Laser levelling
- Plumbing/electrical/
drainage
- Post holes

FREE QUOTES

ROBERTS INSURANCE PROVIDERS



Contact us today for a quote!

Household - Farm & Rural - Business - Public Liability
workers Compensation & More

Cambridge & Swansea

P: 0409 877 244

admin@robertsinsurance.com.au

www.robertsinsuranceproviders.com.au

Roberts Insurance Providers Pty Ltd is a Corporate Authorised Representative of Resilium Insurance Broking Pty Ltd ABN 9216997573 AFSL No. 460382

Servicing
Swansea
2nd & 4th
Friday
each month
11-2.00pm

No
appointment
required!

TASMANIAN SYMPHONY ORCHESTRA

FRIDAY 7 OCTOBER

DOORS 5PM
SUPPORT 6PM
TSO 7PM

SPRING BAY MILL, TRIABUNNA

12-PIECE STRING ORCHESTRA
+ SOLO CLARINET

FOOD + DRINK ON SITE

TICKETS \$40

TSO.COM.AU | 1800 001 190

TSO LIVE SESSIONS

WHAT'S ON
AT
The Bark Mill

Wednesdays

\$20 POT & PARMY
EVERY WEDNESDAY

LUNCH 12-2PM
DINNER 5-8:30PM

Fridays

6:30PM
MEAT TRAY RAFFLE

OPEN FOR BREAKFAST,
LUNCH & DINNER DAILY

96 TASMAN HWY, SWANSEA
PH: 03 6257 8094 | WWW.BARKMILLTAVERN.COM.AU

east coast tasmania
tourism update

REGISTER YOUR BUSINESS ON ATDW

East Coast Tasmania Tourism would like to assist your business with signing up to the Australian Tourism Data Warehouse (ATDW). It is FREE to sign up and should take around 30 minutes.

Once complete, your listing with ATDW could get your business in front of millions of people globally through a range of travel and tourism websites including East Coast Tasmania, Discover Tasmania and Tourism Australia.

As well as the above, your business will also appear for no cost on the East Coast Tasmania App and the new State App, to be launched later this year.

Other distributors pull data from ATDW to use in their advertising - two of the larger businesses are Qantas and Big4. Inclusion in ATDW also ensures consideration of your business in any future Tasmanian marketing campaigns. The data is also converted into 10 languages for overseas use. Remember there is no cost for ATDW listings.

If you are already listed on ATDW, we can show you how small improvements can be made so your listing is visible to many other distributors and websites.

We would like to make an appointment to guide you through this process at a time convenient to you. It can be in person, over the phone or via zoom. To make an appointment, see contact details below:

Melissa Denkinger - 0402 827 998 or info@eastcoasttasmania.com.au
Karen Skews - 0428 661 319 or skewskaren@gmail.com

For more information, please visit www.eastcoasttourism.com.au

This project received grant funding from the Australian Government under the Recovery for Regional Tourism program administered by Austrade.

THE PUZZLE PAGE

THIS WEEK'S CROSSWORD No 39.22 By Rob Gaspari

ALL ANSWERS ON PAGE 7



1			2		3			4		5		6
7	8	9						10	11			
12								13				
14					15							
16									17			
18			19									
20		21							22		23	
	24							25		26		
27									28			
29	30		31	32	33			34				35
36			37					38				
39												

CLUES

ACROSS

- 1. Dominated or characterized by a concern for property values or by materialistic pursuits (9)
- 5. Young dog. (3)
- 7. Stupefied, as with drink (7)
- 10. Compound formed by the reaction between an acid and an alcohol with the elimination of a molecule of water. (5)
- 12. Wicked; violating or inconsistent with the moral law. (4)
- 13. Sodium Chloride. (4)
- 14. Indonesian holiday island destination (4)
- 15. Nourishing food. (8)
- 16. Egyptian sun god (4)
- 17. Mister (2)
- 18. Lithium (2)
- 19. Somebody or something puzzling or inexplicable (6)
- 20. Toilet (3)
- 23. The ratio of the circumference to the diameter of a circle. (2)
- 24. Part of a helmet, protecting the nose and adjacent parts of the face. (5)
- 25. Race of people exemplified by the Scandinavians. (6)
- 28. Production or expression of what is beautiful, appealing, or of more than ordinary significance. (3)
- 29. Ethyl alcohol (7)
- 34. Old capital of Japan (3)
- 36. See 18.
- 37. Monetary unit of Rumania (3)
- 38. Reparation or compensation for a loss, damage etc (6)
- 39. The measurement of the degree of hot or cold of a body or substance. (11)

DOWN

- 1. Popular USA ball and bat game (8)
- 2. Any of the small ropes or lines which traverse the shrouds horizontally, serving as steps for going aloft on sailing ships. (7)
- 3. Must have; required; needed. (9)
- 4. Long throwing stick with pointed tip. (5)
- 5. Decorative design. (7)
- 6. Ill adjusted: lacking harmony (9)
- 8. Enthusiastic public reception of a person;

- enthusiastic applause (6)
- 9. Flat ceramic piece, glazed or unglazed, used for wall decoration or as a weather proofing cover for roofs. (4)
- 11. Thin of body (4)
- 13. Power to endure disease, fatigue, privation etc (7)
- 21. Promise (4)
- 22. Buyer and seller of goods, etc (6)
- 23. Hole in the ground; mine (3)
- 26. Male bee (5)
- 27. Bacon, egg, lettuce and tomato roll. (4)
- 30. Bind or fasten with a cord, string, or the like. (3)
- 31. Mountain (3)
- 32. Born with the maiden name of (3)
- 33. Possessive form of we and us (3)
- 34. Large Aussie flightless bird (3)
- 35. Poisonous Egyptian snake (3)
- 38. Ampere turn (2)

THIS WEEKS SUDOKU

			1		2			
	8	5					6	4
2	4						9	1
			2	3		7	8	
				9		1		
			6	5		4	7	
8	5							6 3
	3	9					2	8
			6		8			

WORD SEARCH

Types of Vegetables

C	N	A	R	E	W	O	L	F	I	L	U	A	C
A	H	C	T	S	W	P	A	A	I	A	A	L	R
B	A	A	U	W	U	U	P	U	B	G	T	I	E
B	R	S	R	E	G	M	P	I	C	A	R	Z	U
A	U	S	N	D	P	P	K	G	E	B	E	U	C
G	G	A	I	E	A	K	T	N	L	A	G	C	I
E	U	V	P	R	R	I	C	T	E	T	N	C	H
U	L	A	E	R	S	N	A	E	R	U	I	H	S
A	A	P	T	L	N	G	R	E	Y	R	G	I	I
C	A	S	A	E	I	U	R	B	D	H	L	N	D
A	O	U	K	E	P	B	O	G	A	E	T	I	A
E	A	P	C	K	P	O	T	A	T	O	E	N	R
P	R	I	L	O	C	C	O	R	B	E	E	S	K
N	O	R	T	W	R	S	P	I	N	A	C	H	A

- CELERY
- PUMPKIN
- LEEK
- SPINACH
- PARSNIP
- CARROT
- BEEF
- ZUCCHINI
- ARUGULA
- PEA
- POTATO
- BROCCOLI
- RADISH
- RUTABAGA
- CAULIFLOWER
- SWEDE
- TURNIP
- GINGER
- CABBAGE
- CASSAVA

Play this puzzle online at : <https://thewordsearch.com/puzzle/16/>

SPORT, ROAD & WEATHER

SWANSEA GOLF CLUB

*NO RESULTS SUPPLIED for
SATURDAY 01ST OCTOBER at time
of publishing*

Jen Butler MP
Your Local Member for Lyons

Bridgewater - 62122150
Cove Hill Shopping Centre

Longford - 63242070
7A Wellington Street

jen.butler@parliament.tas.gov.au



TJ ACCOUNTING

– Phone for Appointment - 0410 051 082

Business Clients – Initial First ½ Hr Free

Tax Returns/ Bookkeeping/ BAS/ Audit / Finance

tjaccounting13@bigpond.com

www.tjaccounting.com.au

Where: 20 Tasman Hwy, Bicheno TAS. 7215



Tax agent
24740881

21 Years' Experience
in Accounting & Tax

ROADWORKS REPORT

FRIDAY, 30TH SEPT 2022

LAKE LEAKE ROAD

Swansea

We are repairing the road surface on Lake Leake Road between Pinnacle Creek and Bluemans Bridge, near Swansea, until Friday, 28 October. Reduced speed limit with frequent lane closures between 7:30 am - 3:30 pm.

Swansea NEW

We are maintaining the Meredith River Bridge on the Tasman Highway in Swansea from Fri-

day, 7 October - Friday, 28 October 2022.

There will be a reduced speed limit and frequent lane closures during our working hours, 7:00 am - 5:00 pm.

TASMAN HIGHWAY

Acton - Hobart Airport

Constructing a new Hobart Airport Interchange between the Acton Interchange and Hobart Airport roundabout until late 2022. Reduced speed limit with frequent lane closures between 7:00 am - 6.00 pm. Please continue to allow extra travel time and follow the directions of signs and traffic controllers.

MIDLAND HIGHWAY

Campbell Town UPDATED

We are doing construction work on the Midland Highway at High Street between Glenelg and Bridge Street, Campbell Town, until mid-October. Reduced speed limit with frequent lane closures between 7:00 am - 6:00 pm. Both lanes of traffic on High Street at the Bridge Street intersection have been directed onto a temporary widened section of High Street. **There is no direct access to Bridge Street from High Street. You will be able to use Church Street as an alternate detour.**

Visit the [Transport website](#) for a detour map and more information.

The 6-Day Glamorgan-Spring Bay Weather Forecast

from Bureau of Meteorology

Bicheno

Tue. 4 Oct	Wed. 5 Oct	Thu. 6 Oct	Fri. 7 Oct	Sat. 8 Oct	Sun. 9 Oct
Possible shower.	Cloudy.	Showers.	Showers.	Partly cloudy.	Possible shower.
13 °C	13 °C	16 °C	20 °C	16 °C	15 °C
8 °C	8 °C	10 °C	12 °C	8 °C	6 °C

Orford/Triabunna

Tue. 4 Oct	Wed. 5 Oct	Thu. 6 Oct	Fri. 7 Oct	Sat. 8 Oct	Sun. 9 Oct
Possible shower.	Cloudy.	Showers.	Showers.	Shower or two.	Possible shower.
13 °C	14 °C	16 °C	19 °C	16 °C	15 °C
5 °C	6 °C	8 °C	11 °C	6 °C	5 °C

Coles Bay

Tue. 4 Oct	Wed. 5 Oct	Thu. 6 Oct	Fri. 7 Oct	Sat. 8 Oct	Sun. 9 Oct
Cloudy.	Cloudy.	Showers.	Showers.	Possible shower.	Possible shower.
13 °C	14 °C	17 °C	20 °C	17 °C	15 °C
7 °C	8 °C	10 °C	11 °C	8 °C	7 °C

Swansea

Tue. 4 Oct	Wed. 5 Oct	Thu. 6 Oct	Fri. 7 Oct	Sat. 8 Oct	Sun. 9 Oct
Cloudy.	Cloudy.	Showers.	Showers easing.	Possible shower.	Possible shower.
12 °C	13 °C	16 °C	20 °C	16 °C	15 °C
6 °C	7 °C	9 °C	11 °C	7 °C	5 °C