

2022

FREE

GREAT OYSTER BAY Community News

Tuesday 21st June 2022

Issue 24.2022



HER EXCELLENCY VISITS SPRING BAY MILL

On Tuesday the 14th of June Her Excellency the Honourable Barbara Baker AC, Governor of Tasmania and Emeritus Professor Don Chalmers AO visited Spring Bay Mill to host a civic reception with the local community.

The site — which was once the world's largest wood chip mill and has been through several years restoration and reimagining before being reborn in 2019 as a sustainable events venue — was at last officially opened by Her Excellency.

Spring Bay Mill has won multiple awards at the past two Australian Institute of Architecture Awards, and Her Excellency cut a ribbon with gold scissors outside their award-winning Banksia Room to mark the occasion.

The afternoon began with a Welcome to Country from Auntie Brenda and speeches from Jen Fry and Mayor Robert Young. Her Excellency then shared her experiences of coming to Spring Bay Mill and her love for and connection to the East Coast of Tasmania.

Garden-to-plate canapés, sparkling wine and mingling followed in the award-winning Banksia Room, before Her Excellency enjoyed a private tour of Spring Bay

Mill with Founder Graeme Wood, General Manager Joe Pickett and Lead Horticulturist, Mark Fitzgerald, learning about the story and vision of the state-of-the-art events venue along the way.

General Manager Joseph Pickett: *"It's been a big project here on the East Coast, employing a lot of locals and transitioning the site from its industrial past to being a*

regenerative tourism asset where we are able to really showcase the beauty of this region.

Her Excellency, Barbara Baker: *"I understand that one of the Glamorgan Spring Bay Council's goals is to encourage meaningful year-round employment within the municipality, so it is wonderful to see Spring Bay Mill working with the community to assist with this goal. This is an amazing facility and I'm looking forward to seeing the rest of it, but with magnificent views, I'm sure it will attract numerous business events and weddings to this beautiful place."*

Since the closure of the Triabunna Wood Chip Mill and birth of Spring Bay Mill, the site has been significantly regenerated, with tens of thousands of native plants planted by the horticulture team, expansive organic veggie gardens and wildlife welcomed back after decades of industrial use. It is now a hub for business, weddings, school groups and sustain able events.

Spring Bay Mill is a significant part of the ongoing revitalisation of the East Coast of Tasmania as a hub for business, sustainability, and events.

Contact:
Marketing Manager
Sophie Murfitton so-phie@springbaymill.com or 0448336458

Media release



OPENING TIMES**SWANSEA ONLINE
ACCESS CENTRE
Inc.**

swansea.oac@education.tas.gov.au

**&
GREAT OYSTER BAY
COMMUNITY NEWS**
gobcnews@gmail.com

Franklin St. Swansea (at library)

Phone: 0424 425 908

OPEN 10-3pm MON-FRI
CLOSED WEEKENDS
+ PUBLIC HOLIDAYS**SWANSEA
LIBRARY**Franklin St. Swansea
(at Primary School)
Phone: 6257 8607**OPEN TUESDAY & THURSDAY**
9.30 am-12.30pm 1.15pm-4.15pm
CLOSED ALL OTHER DAYS
+ PUBLIC HOLIDAYS**BICHENO
LIBRARY**78 Burgess Street (at Town
Hall)

Phone: 6387 5609

OPEN TUES + THURS 10am - 2pm
WED 10am - 4pm
SAT 10am - 12noon
CLOSED
FRIDAY/SUNDAY/MONDAY
+PUBLIC HOLIDAYS**OPENING TIMES****GLAMORGAN -
SPRING BAY
COUNCIL**9 Melbourne Street,
Triabunnaoperating normal hours of operation,
Monday to Friday
9.00am – 4.30pm**BUT with some changes, go to**
**[https://gsbc.tas.gov.au/services-facilities/
public-notice/](https://gsbc.tas.gov.au/services-facilities/public-notice/) for details****WASTE MANAGEMENT CENTRES
(WMC)****BICHENO WMC** – 2km south of the
town, on the Tasman Hwy.**COLES BAY WMC** – turn off Coles Bay
Rd, about 5kms from the township.**ORFORD WMC** – Tasman Hwy, just
north of Raspins Beach.**SWANSEA WMC** – top of Maria St.**All four WMCs are open from****SUMMER HOURS:****MON – FRI 2:30 – 4:30PM****CLOSED: SATURDAY****SUNDAY: 10AM – 2PM****WINTER HOURS:****From the 2 May 2022****MON, WED, FRI 2:30 – 4:30PM****CLOSED: TUESDAY, THURSDAY &
SATURDAY****SUNDAY: 10AM – 2PM****CLOSED: GOOD FRIDAY AND
CHRISTMAS DAY.****OPENING TIMES****SPRING BAY
ONLINE
ACCESS CENTRE
Inc.**Vicary & Melbourne Street
Triabunna, Tasmania 7190
Phone: 0472 511 136
springbay.oac@education.tas.gov.au**OPEN MON-FRI 10-2pm**
CLOSED WEEKENDS
+ PUBLIC HOLIDAYS**ORFORD
LIBRARY**30A Charles Street
Phone: 6123 4039**OPEN**
TUESDAY
10.00am-1.00pm 2.00pm-4.30pm
WEDNESDAY
10.00am-2.00pm
FRIDAY
10.00am-1.00pm 2.00pm-6.00pm
CLOSED ALL OTHER DAYS
+ PUBLIC HOLIDAYS**SWANSEA OP-SHOP**

Franklin St. Swansea

Trading hours:

Monday — Saturday 10 am—2 pm**Closed Sunday**

Donations most welcome

Gloria Willis manager

All Saints Op Shop for Anglican
Parish of East Coast**GREAT OYSTER BAY COMMUNITY NEWS TEAM**

The current Swansea Online Access Centre volunteers and our coordinator

Advertising, Stories & Copy Deadline: STRICTLY 12 NOON FRIDAY**The Great Oyster Bay Community News is printed on Mondays/Tuesdays.****Please ensure your ads are in early to meet your advertising deadline dates.**Advertisements costing **\$20 or less MUST BE PAID IN CASH** at the Swansea Online Centre prior to publication
Please provide adverts in PDF, JPG or Word format. Articles, letters and photographs of events are most welcome!**Phone: 0424 425 908 Post: PO Box 308 Swansea 7190 Email: gobcnews@gmail.com****Website: www.gobcnews.weebly.com****Facebook: www.facebook.com/greatoysterbaycommunitynews****Printed at the Swansea Online Access Centre, Swansea, Tasmania****Opening Hours: Monday to Friday 10am-3pm (Unless otherwise noted)**

Closed Sat & Sun + Public Holidays

Franklin Street, Swansea (next to the Library).

LETTERS to THE GOBCNews TEAM (editor)Please address your letters to the editorial team and please keep it under 200 words, and email to gobcnews@gmail.com.Letters to the editor must comply with our editorial policy, see disclaimer below. **Un-authored letters will not be published.****THE GREAT OYSTER BAY COMMUNITY NEWS** is a weekly newsletter containing articles of interest, community notices and advertising relevant to the Glamorgan Spring Bay Municipality. Advertising revenue is used to finance the printing of 600+ Newsletters, 50 weeks of the year. The Great Oyster Bay Community News is distributed to all major towns of the municipality weekly, free of charge to our readers.

The GOBCNews team

Disclaimer: The Great Oyster Bay Community News reserves the right to print any material which is designed to benefit or be of interest to the local community. Consequently, all views or opinions expressed in material published are solely those of the writer of that material and do not necessarily reflect the view or opinions of any persons associated with Great Oyster Bay. Community News, the Swansea Online Access Centre or Libraries Tasmania. The Great Oyster Bay Community News also reserves the right to edit or refuse to publish any material, that also may be deemed damaging, misleading or detrimental to our organisation or community or any person. Please refer to our Editorial and Advertising policies which are located on our website: www.gobcnews.weebly.com

OPENING TIMES**SWANSEA GENERAL PRACTICE**

May Shaw, Wellington St. Swansea
Open Monday—Friday
9.00am-1.00pm 2.00pm-5.00pm
 For an appointment phone
6257 8205

SWANSEA COMMUNITY & MEN'S SHED

Opening Hours:
 Tuesday 10am to early afternoon
 (men & women's group)
 Wednesday 10am to 1pm (men's group)
 Wednesday afternoons (school pupils)
 Thursday 10am to early afternoon
 (men's group)
 Friday 10am to early afternoon
 (women's group)
Contact Colin Stevenson 0400 030 746

SWANSEA RE-USE SHOPPE

Opening hours:
 Saturday - Sunday, Tuesday - Thursday
 10am to 3pm
CLOSED MONDAY & FRIDAY
Contact Tracey Kean 0407 639 022

EAST COAST HERITAGE MUSEUM

22 Franklin Street, Swansea
 Open Mon to Fri 10am-4pm
Closed Good Friday & Christmas Day
www.eastcoastheritage.org.au

SWANSEA POST OFFICE

Opening Hours
 MONDAY – FRIDAY 7:30AM – 6:00PM
 SATURDAY 7:30AM – 2:00PM
 Full newsagency & post office services
 available during opening hours
 including Saturday
 When the flags are out – we are open
PH.03 6117 0000

POP UP BOOK STALL

Opening hours: 10.30 – 3pm
 Days: Wednesday - Sunday
 plus Public Holidays
 Venue - Community Hall (former Council
 Chambers Building) Vicary St. Triabunna.
 All proceeds are donated to community
 organisations and activities.

Enquiries

Judy 0438571262;
Beth 0407571181;
Margaret 0438606446;
Caroline 0411895067
www.facebook.com/

PopUpBookStall;
email popupbookstall@hotmail.com

**OPENING TIMES****SWANSEA RSL SUB - BRANCH INC.**

OPEN HOURS
BAR
 Monday & Tuesday.....3pm
 Wednesday & Thursday.....2pm
 Friday & Sunday.....12am
 Saturday.....11pm
BISTRO

Wednesday - Saturday
 5.30pm - late
 Dinner only
**Our bistro will be closed for renovations
 as of the June 25th 2022 after the Hangi.
 We are hoping to be back up an running
 end of July 2022.**

CLUBS & GROUPS**DOLPHIN SANDS COMMUNITY ASSOC. (DSCA)**

Email: dscsca.7190@gmail.com
 Website: dsccommunity.org.au
 Mail: PO Box 133, Swansea, 7190

SWANSEA BRANCH CWA meets

2nd Wednesday of the month.
 New members always welcome.
 Craft days alternate months.
 Contact **0402 043 621** for details

CRANBROOK CRAFT GROUP

Every Wednesday
 10.30 am at
 Cranbrook Hall. Cranbrook.
 Contact **Edith 0409 216 793**

**SWANSEA EXERCISE GROUP**

held at Swansea Golf Club
 Mondays 8:45 for 9 am. (currently full)
 Followed by **Qigong** at 10 am
 Enquiries:
0429 178 076 / 0448 649 765
 (re Exercise Group) or
0448 649 765 (re Qigong)

**SWANSEA TENNIS CLUB**

is open to all members
 Available for hire.
 Contact
Kathy Dance 0439 732 496.
 All new members welcome.

**SWANSEA MODEL YACHT CLUB INC.**

Sailing, ~~weather per~~ y
 Monday
 ON HIATUS UNTIL
Monday 5th September '22
 at the Kelvedon
 south of Swansea.
 Inquiries to Cheryl on 0419393774

CLUBS & GROUPS**SPRING BAY WALKERS**

Every Thursday morning, contact
Peter Hutememier 6257 7506.
 See programme
www.triabunnavillage.com.au/springbay-walkers

GLAMORGAN SPRING BAY HISTORICAL SOCIETY INC.

Are you interested in local History? Then
 consider joining the Historical Society.
 Currently our office is open
 Tuesdays 10am to 4pm
 22 Franklin Street, Swansea
<https://glamorganhistory.org.au/>
 Phone: 03 6256 5077

GLAMORGAN SUICIDE AWARENESS NETWORK

Contact us on Facebook or Email

- www.facebook.com/glamorganSAN
- glamorganspn@gmail.com
- Crisis Life Line 24/7: 131114
- Support Life Line Tas: 1800 984 434

Everyone needs someone to talk to

THE SWANSEA HOPE CLUB CUPPA & CHAT GROUP

1st & 3rd Monday of each month
 from 2pm onwards
 @ the Community Hub
 4 Arnol St Swansea
 Enquires contact Steve, Linda
 0458 959 820
 Look forward to seeing you there.

SPRING BAY POTTERS

The Spring Bay Potters Group situated in
 specifically built facilities at The Village
 in Triabunna, the Group regularly meet for
 classes and potting on;

Wednesdays & Fridays
10.00am to 1.00pm.

As well as tuition, clay, tools,
 glazes etc. are provided for a cost.

Peter Hüttemeier

**DOLPHIN SANDS ART GROUP**

King's Gallery
22 Cambria
Dolphin Sands

- Friday 11am to 1pm
- BYO everything
- \$5 for charity
- Some easels available
- Coffee from gallery

Contact Laurie
0499 193 821

**IMPORTANT**

Please keep all your community notices up to date by contacting us on
Phone: 0424 425 908 or Email: gobcnews@gmail.com

Online in colour every week at www.gobcnews.weebly.com

CLUBS & GROUPS

TAP DANCING CLASSES

Swansea Town Hall on Mondays
at the new time of 4.30pm
All enquiries phone
Janelle 0437 264 332

SWANSEA & DISTRICT GARDEN CLUB

Meetings held 2nd Thurs each month
2pm at Swansea Community Hub.
New members welcome.
Ph 0417 977 118 or 0402 043 621
Swansedistrictgardenclub@gmail.com



THE ORFORD & DISTRICT RIDING CLUB INC.

The last weekend of every
month between 10.00am & 3.00pm
57 Inkerman Street Triabunna
For info. Phone: 0427796096
E-mail: sandmgraham@bigpond.com
Facebook— Orford and District
Riding Club Inc.

NEW MEMBERS WELCOME

GKR KARATE

Karate classes starting on Thursday
at the Triabunna District School.
The class starts at 12 noon.
For further details contact
Nathan Jacobs 0482 471 443

MAHJONG & SCRABBLE

1.30 pm every Monday
at Swansea Golf Club.
Contact Lyn Lyne 0438 578 208



Rescue, rehabilitation and
release of native wildlife.
Also treating wombats
with mange in our Municipality
on behalf of Wombat Rescue.

Contact Marcia 0448714419

SWANSEA MEN'S PROBUS CLUB

Meeting starts 10am,
guest speaker 11am, usually
followed by BBQ
every 2nd Tuesday of the month
at Swansea Golf Club

Swansea Bowls Club

Winter Indoor Bowls

On Fridays

Roll up at 2.00 pm

All Welcome,

come and join the fun.

Contact: Mick 0417 064 571 or
Judi 0449 596 175 for details

CHURCH NOTICES



EAST COAST ANGLICAN

Please join us for church
every Sunday
10am Swansea (10 Noyes St)
3pm Triabunna (1 Franklin St)
6257 3321
www.eastcoastanglican.church
Swansea - 10 Noyes St
Triabunna - 1 Franklin St
Bicheno - Corner Burgess St &
Morrison St
Woodsdale - 2265 Woodsdale Rd

ST. ANDREWS UNITING CHURCH SWANSEA

will be holding services on
the 1st & 3rd Sundays of
each month at 10am.
Everyone is invited to attend.
All Welcome

COMMUNITY NOTICES

MILITARY COMPENSATION & REHABILITATION ADVOCACY SERVICES

are now available at the Swansea RSL
for ex-service, current serving and family
members of the Australian Defence
Forces. Contact
Steven Kenny 0438 060 047

THE VILLAGE

20 Melbourne Street, Triabunna
Community Market third Sunday of each
Month 10.00am to 1.00pm. Large range
of stalls and activities. Sell from your car
boot, charge applies. Large range of com-
munity activities during the week,
for details see:

<http://triabunnavillage.com.au/>
<https://www.facebook.com/VillageTriabunna/>

SWANSEA PRIMARY SCHOOL LAUNCHING INTO LEARNING
INVITES YOU TO

READ, SING, PLAY & CREATE!

WHERE?
SWANSEA PRIMARY
SCHOOL LIBRARY
WHEN?
EVERY FRIDAY
DURING SCHOOL TERMS
9.30-10.30 AM
COST?
FREE
WHO IS IT FOR?
YOUNG CHILDREN (0-4)
AND THEIR FAMILIES
WHAT TO EXPECT
PARENTS, TEACHERS
AND CHILDREN PLAYING
ALONGSIDE EACH OTHER, HAVING FUN AND LEARNING
TOGETHER.

FOR MORE INFORMATION, PLEASE CONTACT THE SCHOOL.

COMMUNITY NOTICES

SWANSEA COMMUNITY ROOM

with kitchen facilities.

Available for hire

Contact Heather Groombridge
0416 200 172

COLOUR ISSUES for 2022

Issue 01 January 11

ISSUE 13 APRIL 05

NEXT

ISSUE 26 JULY 05

ISSUE 39 OCTOBER 04

ISSUE 50 DECEMBER 20



SWANSEA COMMUNITY CHRISTMAS MEETING

Wednesday 29th June
@ 7pm Swansea RSL

Come and help make this year's Swansea
Community Christmas even better .
Your ideas count *Kelvin Jones*

Emergency Services

VOLUNTEERS NEEDED !
Contact us !
swanseaes@gmail.com
freycinetvmr@fastmail.com.au
Our talk to one of our great volunteers

Find us on facebook.

MEALS ON WHEELS SWANSEA ROSTER

Date	2022	Name
Wed	22 Jun	G Bryan & J Amos
Thu	23 Jun	K Dance
Fri	24 Jun	H Ford
Mon	27 Jun	L Dann
Tues	28 Jun	A Quinn & L Tucker

Advertising, Stories & Copy Deadline:
STRICTLY 12 NOON FRIDAY

THANK YOU

SWANSEA GOLF CLUB

WISHES TO THANK, the many valuable businesses who very generously sponsored our June Long Weekend Tournament. To all the visitors and members who braved the very cold icy and windy conditions to challenge the game on our beautiful golf course, we appreciate your support and friendship, thank you! Thank you to so many who contributed to ensuring our weekend was enjoyed by all, a great team effort!

Sponsors:

Sharp Airlines, Cape Wickham Links Golf, Country Club Casino, Bryce Gorham Golf Centre, Piermont Retreat, Pennicott Wilderness Journeys, Drummonds Golf Cambridge, Swansea Motor Inn, Waterloo Point, Melshell Oysters, Spring Vale, Milton, Boomer Creek, and The Bend Vineyards, Clennett's Mitre 10 and Saltshaker Restaurant.

Raffle Winners:

1st Prize - Anita Smith - Sharp Airlines & Cape Wickham Links
2nd Prize - Linda Noonan - Piermont Retreat Premium Spa Suite
3rd Prize - Julie Gregson - 6 Mixed Milton Vineyard Wines



THANK YOU

“The Lewis family would like to express their sincere appreciation for the love and care given to Barb during her time at the May Shaw Health Centre. Barb and her family have appreciated the wonderful doctors and all the staff who have provided care and gone out of their way to make Barb’s time there so special.

It has been a great comfort for Barb’s children (Libby, Peter, & John to know she has been so well looked after.

Thank you all very, very much!

Barb is now settling into Fairway Rise Nursing Home Lindisfarne. “

ARTICLES of INTEREST



MENTAL HEALTH FIRST AID AWARENESS IN SWANSEA

Recently 20 eager East Coasters completed a two-day training course in the provision of Mental Health First Aid. The program aims to extend the concept of medical first aid training to include mental health problems. Participants are empowered to provide initial support to someone who is developing a mental health problem or experiencing a mental health crisis.



Our trainer, Darren Clark may be remembered as a former resident of Cambria Drive, and the former proprietor of the Horney Cray milk bar. He is now the director of his own business “Workplace Alive and Well Training” based at Bagdad.

The venue was the Emergency Services complex in Maria Street. A diverse assemblage of participants, mostly well known Swansea identities, but some from Bicheno and Triabunna attended. Right from the start we were impressed by the professionalism, preparation and organisation. Training consisted of visual presentation, discussions, exercises and role plays.

Mr Clark is a consummate and polished presenter; his approach was friendly and



informative. The content was not confronting. All agreed afterwards that this skill set is a valuable asset to the town.

Appreciation must be given to GSAN (Glamorgan Suicide Awareness Network) for their incredible effort to gain the necessary funding. The fully funded and catered course was made possible by the generosity of Glamorgan Spring Bay Council and Wesley Life Force. Scrumptious morning teas and lunches were provided by Sherry King of King's Gallery, Di Rigby, and by our wonderful Salvo's, Linda and Steve Miller.

If you are interested in another MHFA course next year please let the committee know by emailing glamorganspn@gmail.com.

Brenton Wheare.

ROBERTS INSURANCE PROVIDERS

Contact us today for a quote!

Household - Farm & Rural - Business - Public Liability
workers Compensation & More

Cambridge & Swansea

P: 0409 877 244

admin@robertsinsurance.com.au

www.robertsinsuranceproviders.com.au

Roberts Insurance Providers Pty Ltd is a Corporate Authorised Representative of Restium Insurance Broking Pty Ltd ABN 92169975973 AFSJ No. 460382

Servicing
Swansea
2nd & 4th
Friday
each month
11-2.00pm

No
appointment
required!

FOR SALE

8 ft stainless steel shaft paddles \$50
Mitchell s/w surf/spinning wheel
RHW No 487 \$50

phone
0457 578 661



SUPPORT AVAILABLE FOR TASMANIANS ON ELECTRICITY PRICES

THE Independent Tasmanian Economic Regulator has today announced that prices will increase for both Aurora Energy residential and small business customers for 2022-23.

The increase of 11.88 per cent has been primarily driven by high wholesale energy costs, with a range of recent national and global events placing significant upwards pressure on the wholesale energy market.

These increases will not be unique to Tasmania, and energy customers around the country will likely face similar.

Last year Tasmanian standing offer power prices decreased by 7.11 per cent for residential and 11 per cent for small business customers, meaning prices have been among the cheapest in the country.

Aurora's retail costs account for just 12 per cent of total electricity prices. More than 70 per cent of a customer's final bill is made up of wholesale energy (generation) and network (transmission) costs. As part of the Regulator's recent Price Determination, Aurora Energy's allowances it can recover will decrease in real terms over the next three years.

Aurora Energy Chief Operating Officer, Kane Ingham, acknowledged the difficulty already being felt by Tasmanians, and wanted to reassure customers they are here to help.

"We know today's news is going to make it very tough on some individuals and families who are already struggling to make ends meet," Mr Ingham said.

"But as Tasmania's 100 per cent owned and operated energy retailer, we genuinely care about our customers – we're customers too – and we're committed to doing what we can to help during this challenging period because it's our community and we're invested in it.

"Supporting each other is an integral part of what it is to be Tasmanian and it's why we are so proud to be a part of the Tasmanian community.

"We encourage any customer who may be

struggling to keep on top of their energy bill and are in need of support to get in contact; we have the support, services and strategies available to drive customers' energy bills down."

The Regulator also announced the Feed-in Tariff rate for customers with solar installations will be increased to 8.883c/kWh due to the increase in the wholesale electricity price for 2022-23.

Any customers that need an extra hand are encouraged to contact Aurora's YES Team (Monday to Friday from 9am-4.30pm) on 1300 10 2010 or visit auroraenergy.com.au Aurora Energy's three point plan for high energy bills:

1. Support:
 - a. Extended payment options, relief via Aurora Energy's nation-leading YES (financial hardship) program, including an extension of the incentive program, and an enhanced Customer Support Fund to support anyone experiencing financial vulnerability;
 - b. The Tasmanian Government has announced an increased rate for concessions customers, as well as a \$119 Energy Bill Supplement, to be provided from 1 August 2022.
2. Services:
 - a. aurora+ available with no product service fee from 1 July 2022, enabling more customers to gain greater control over their energy usage and ultimately reduce their electricity costs;
3. Strategies:
 - a. More energy efficiency tips across digital platforms, advertising channels and through Aurora Energy's community networks as low energy efficiency in Tasmanian homes remains a big driver of high bills, especially in winter.

For further information contact Jordan Abell, Senior Corporate Affairs & Stakeholder Engagement Advisor on 6237 3341



AURORA PROVIDES FINANCIAL SUPPORT TO ENERGY HARDSHIP FUND

AURORA Energy will provide \$200,000 to top up the Tasmanian Government's energy hardship fund to directly support their customers who need an extra hand to pay their energy bill.

The fund, administered by The Salvation Army, is close to being exhausted, with emergency relief providers around the state experiencing higher than normal demand for their services as the impacts of COVID-19 continue to have an effect.

Salvation Army Doorways Manager – Tasmania, Stacey Milbourne, said the extra financial support came at the perfect time, especially with the arrival of winter.

"The additional funding from Aurora will provide much-needed support for individuals and families across our Tasmanian communities," Mrs Milbourne said.

"Currently what we are seeing at our Doorways centres and emergency relief centres are community members having to make the hard decision whether to heat their homes, or buy food or pay rent for the week. This funding will make the world of difference for those Tasmanians."

Aurora Chief Operating Officer, Kane Ingham, said the energy retailer was pleased it could fill the shortfall.

"Since the very start of the pandemic, we've been there for our customers," Mr Ingham said.

"We recognise that there are still challenging times ahead for homes and businesses in Tasmania and as a proud Tasmanian owned and operated company, we are committed to doing what we can to help, however long it takes."

Mr Ingham encouraged any Aurora customer who may be struggling to keep on top of their bill and are in need of support to get in touch on 1300 13 2003 or visit auroraenergy.com.au

For further information contact Jordan Abell, Senior Corporate Affairs & Stakeholder Engagement Advisor on 6237 3341

HAVE YOU ANY STORIES OR ARTICLES YOU WANT TO SHARE? PLEASE SEE OUR WEBSITE FOR DETAILS. WWW.GOBCNEWS.WEBLY.COM



Delivering from Hobart to Swansea & everywhere inbetween

Call Andrew Moore

0457 711 108

downandbackdeliveries@yahoo.com.au

GREAT OYSTER BAY COMMUNITY NEWS RATES

SIZE	Price per single issue	
	NPClubs & Personal	Business
1 (6x3cm)	\$6	\$7.50
2 (6x6cm)	\$12	\$15
3 (6x9cm)	\$18	\$22
4 (6x12cm)	\$24	\$30
1/4 page	\$36	\$45
1/3 page	\$48	\$62
1/2 page	\$66	\$86
Full page	\$102	\$112
insert	\$50	

Discounts apply on multiple issues

DETAIL DENTURE CLINIC *Triabunna*

New & old patients welcome

- Implant dentures
- Full dentures
- Partial dentures
- Acrylic based
- Metal based
- Veteran Affairs provider
- Custom mouthguards
- Relines
- Same day repairs
- Health fund rebates



15 Vicary Street, Triabunna

Open every Friday by appointment **Phone 6234 4258**

Roberts and Partners Lawyers

**Wills & Conveyancing
Legal Advice Commercial
Litigation**

**1 Stanton Place,
Cambridge**

(03) 6248 4144

admin@robertsandpartnerslawyers.com.au



Safe and Effective Treatments for all of your Pest Problems

Chris Green & Craig Andrews



Licensed, Insured & Reliable
6243 9865, 0432 210 004
www.insectsrgon.com.au
email: insectsrgon1@gmail.com

DO YOU NEED PHOTOCOPYING

Large print runs at very reasonable prices. B&W or colour, A4/A3 size. Standard or in booklet form. We can also print/scan/email your important documents.

Discounts for SOAC members

**SWANSEA
ONLINE
ACCESS
CENTRE
INC.**



Franklin Street, Swansea, 7190.
Next to the Library
Phone: 0424 425 908
Email: gobcnews@gmail.com

7	3	9	1	5	4	6	8	2
8	1	2	9	6	3	4	7	5
4	5	6	7	2	8	1	9	3
2	6	1	8	3	7	5	4	9
5	8	4	6	9	1	3	2	7
3	9	7	2	4	5	8	6	1
1	4	8	5	7	2	9	3	6
6	7	3	4	1	9	2	5	8
9	2	5	3	8	6	7	1	4

W	A	L	L	E	D	A	I	S	Y	D	U	C	K
S	D	O	N	A	L	D	D	U	C	K	Y	R	N
C	U	B	A	O	T	U	L	P	A	I	E	Y	T
R	O	U	I	G	O	O	F	Y	M	K	E	B	A
O	D	A	G	E	N	I	E	B	A	L	O	O	C
O	E	S	U	O	M	Y	E	K	C	I	M	C	E
G	L	B	O	L	T	I	L	G	W	O	M	C	R
E	T	U	M	D	Y	T	B	A	M	B	I	O	I
M	M	S	D	C	D	D	H	A	N	E	M	O	H
C	C	D	A	U	Y	A	O	U	R	K	A	M	S
D	H	U	L	I	M	Y	L	O	M	I	W	R	E
U	A	I	A	A	M	B	U	E	W	P	E	O	H
C	B	I	P	A	E	K	O	W	O	C	E	L	C
K	E	S	U	O	M	E	I	N	N	I	M	R	A

A	S	S	I	S	T	A	N	T	T	T					
S		O				M		W							
C	A	P			T	A	P	P	I	N	G				
E		O			R	H		C							
N	O	R	M	A	L	I	S	E					W		
D					D	B							E		
S					10	G	R	E	V	I	L	11	L	E	A
					R		M		A			O			V
12	B	R	I	T	A	I	N					13	O	D	E
E					L		R					S			R
X					14	L	A	K	E	P	O	E	T	S	

This weeks PUZZLE PAGE answers
No cheating now!

Timber Joinery

WINDOWS • DOORS • GATES •
STAIRS • MACHINING & MOULDING •
ALL PROFILES



Peter 0447 758 116



Book your flu shot today.
Don't let the flu go viral.

FREE
until 6 July

It hasn't been around lately, but flu is back this winter. Get a free flu vaccine through participating GPs, pharmacies and all state-run community clinics before 6 July. Available at:

- GPs and state-run community clinics for all people aged 6 months and over
- Participating pharmacies for all people aged 10 years and over.

Speak with your GP, health care provider or local pharmacist to book an appointment. *Normal Medicare arrangements apply for GP consultations.

Remember
the Flu!
Book your flu shot today.

For more information on the flu
go to health.tas.gov.au
or call 1800 671 738.



ADVERTISEMENT

Tasmanian
Liberals



Jane Howlett MLC
Liberal Member for **Prosser**
Please contact my office for any assistance.

Shop 1/31 Cole Street, Sorell TAS 7172

(03) 6212 2101 JaneHowlettMLC

jane.howlett@dpac.tas.gov.au

Authorised by Jane Howlett, Shop 1/31 Cole Street, Sorell TAS 7172.

ADVERTISEMENT

Guy Barnett
Liberal Member for Lyons MP

Listening, Caring,
Delivering.

Tasmanian
Liberals

15 High Street, New Norfolk TAS 7140 (03) 67012170

GuyBarnettMP guy.barnett@dpac.tas.gov.au

Authorised by Guy Barnett, 15 High Street, New Norfolk TAS 7140.

Jen
Butler MP

Labor

Your Local Member for Lyons

Bridgewater - 62122150
Cove Hill Shopping Centre

Longford - 63242070
7A Wellington Street

jen.butler@parliament.tas.gov.au



VACANCY INDEPENDENT LIVING UNIT, ESPLANADE WEST, TRIABUNNA

A vacancy exists at the Independent Living Units (previously ElderCare) situated at 1 Esplanade West, Triabunna.

Prospective tenants can now submit expressions of interest, which must be received by the close of business on Friday, 8 July 2022. If you have submitted an application recently it will be considered as part of this process.

To be eligible, applicants should be either single or a couple over the age of 55 and be able to live independently in small unit accommodation. The application also includes income and asset tests.

For further information, or to obtain an application form please visit the Council Office or telephone 6256 4777.

Greg Ingham
GENERAL MANAGER

THE GREAT OYSTER BAY COMMUNITY NEWS ANNUAL GIVING PROGRAM IS OPEN FOR 2022.

The Great Oyster Bay Community News also uses these revenues to distribute small grants to needy organisations from the Glamorgan-Spring Bay municipality. These small grants are strictly for not-for-profit organisations and are designed to assist these organisations in the purchase of goods and/or services that will benefit the Glamorgan-Spring Bay community.

THE GRANTS ARE OPEN TO ALL NON-PROFIT ORGANISATIONS BASED IN THE GLAMORGAN-SPRING BAY MUNICIPALITY.

The grants are normally distributed once a year and applicants are voted for by the SOAC Committee via the application form which is available from the Swansea Online Access Centre or downloaded from the web site: <https://gobcnews.weebly.com/annual-giving-program.html>

**APPLICATIONS CLOSE
MONDAY 01ST AUGUST 2022**

Note conditions apply,
see form for details.

Robert J Gaspari (Secretary)



east coast tasmania

<https://eastcoasttasmania.com/>





FREE-RANGE PORK
 PIG-IN-A-BOX BUTCHERED,
 PACKAGED, DELIVERED
25KG HALF PIG \$330
 CALL 0459 080 201 OR
 VISIT LONGNAMEFARM.COM.AU



EASTCOAST TREE SURGEON
 ALL ASPECTS OF TREE WORK
 32 YEARS OF EXPERIENCE
 COUNCIL APPROVED CONTRACTOR
 LIVING & SERVING THE WHOLE OF
 THE EAST COAST
 BASED IN SWANSEA
CALL: HUGH WILSON 0431 755 300



ACCOUNTING PROFESSIONALS
 ITP will be visiting Swansea
 at Dove Cottage, Swansea
 Cottage, Franklin Street on
 Friday 22nd & Sat 23th July.
 ITP will be visiting Iluka
 Tavern, Coles Bay on
 Sunday 24th July
 Phone 63 449 433
itp ACCOUNTING PROFESSIONALS

- GLASS REPAIRS
- WINDOW, DOOR REPAIRS
- SECURITY DOOR, SCREENS
- SHOWER SCREENS
- FLY SCREENS
- GLASS BALUSTRADES
- SPLASH BACKS & MORE

SERVICING THE EAST COAST
GLAMORGAN GLASS & GLAZING
 NATHAN
 0400516069
 PONTYPOOL
 7190
nathan.ede2@bigpond.com


Tim & Lorraine Vincent
 Earthmoving & Landscaping
SWANSEA BOBCAT
swanseabobcat89@gmail.com
 0427 794 248
 89 Gordon St
 Swansea 7190

FOR HIRE

- Skid steer bobcat—4 ton
- Excavator & Tipper
- Slashing/clearing/ driveways
- House sites/landscaping
- Laser levelling
- Plumbing/electrical/ drainage
- Post holes

FREE QUOTES

Swansea Fishing Charters Tasmania



M: 0427 306 264 | E: jack.kelly.swansea@gmail.com



THE BEND WINE TASTING
Saturday 2nd July
4pm – 6pm
 Come to Tellers, enjoy the fire, be entertained.
 Explore the intricacies of a fine wine
 with Howard Edginton from
 THE BEND VINEYARD.
BOOKINGS ESSENTIAL
PHONE 0439 481 001
 OPEN Thurs, Sat and Sun 3-8pm
 CLOSED Mon - Wed, Fri

WHAT'S ON AT
The Bark Mill
Wednesdays
\$20 POT & PARMY
EVERY WEDNESDAY
 LUNCH 12-2PM
 DINNER 5-8:30PM
TRIVIA 7PM IN THE BAKERY
TEAMS OF 3 - 8 PEOPLE BOOKINGS ESSENTIAL
 96 TASMAN HWY, SWANSEA
 PH: 03 6257 8094 | WWW.BARKMILLTAVERN.COM.AU

TAX RETURNS



East Coast Tax Accounting

SUZANNE WHYTCROSS

0400041710

suzanne@ectax.com.au



SWANSEA PROPERTY MAINTENANCE

- Lawn & edging — ride on & mower
- Gardening & pruning
- Small property slashing — All terrain ride on
- Property clean ups
- Window cleaning
- Flu & wood heater cleaning
- Gutter & roof cleaning
- Pressure washing
- Waste removal
- Mini Excavator work 1.7t
- Retaining walls
- Tree trimming
- Window & door repairs
- Shower screen
- Handy man service for all types of repairs

CALL STUART FOX
0409 435 991

8 Wedge Street, Swansea TAS 7190 ABN 34161234295

JAWS MAINTENANCE & SERVICES

- Home and Property Maintenance
- Landscaping
- Gardening
- Lawn Mowing and Brush Cutting
- Rubbish Removal
- Property Hazard Reduction/clearing

No job too big or too small....



Contact us today
to make your
home JAWSome!!

Joshua Wickham
0438 866 735
ABN: 20 506 110 168
SWANSEA

jawsmands@gmail.com
Find us on Facebook:
[@JAWSMands](https://www.facebook.com/JAWSMands)

Visit this must-see destination for two nights and see two different light shows

BICHENO BEAMS

SWITCHING IT ON
IN THE OFF SEASON

1 July – 31 July 2022

WHAT: Bicheno Beams Laser Light Show
WHEN: Every night at 6:00pm
Check-in from 5:30pm
SHOW LENGTH: 15 minutes
WHERE: Bicheno Lions Park
Burgess Street entrance
Bicheno, East Coast Tasmania
FREE EVENT

Visit bichenobeams.com to find out how to experience this magnificent event

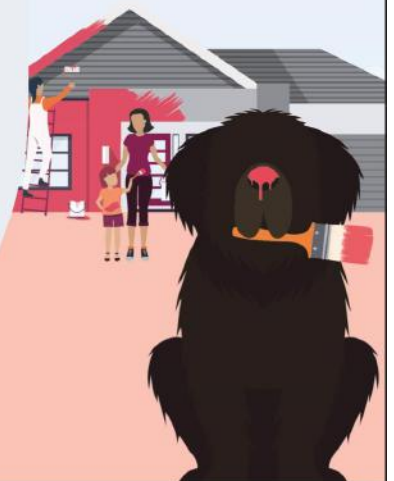
Responsible tourism partnership from the Bundamba Government under the Bundamba Regional Tourism program in relation to the Bicheno (2022) Festival and Recovery Fund

Unlock your home equity

If your home has equity, you have opportunity.

Chat to a home loan specialist today, phone Kristen on 6375 1772
or search Bendigo Bank home loans.

Community Bank · Swansea 6257 8825 · Bicheno 6375 1772 ·
Triabunna 6390 2032



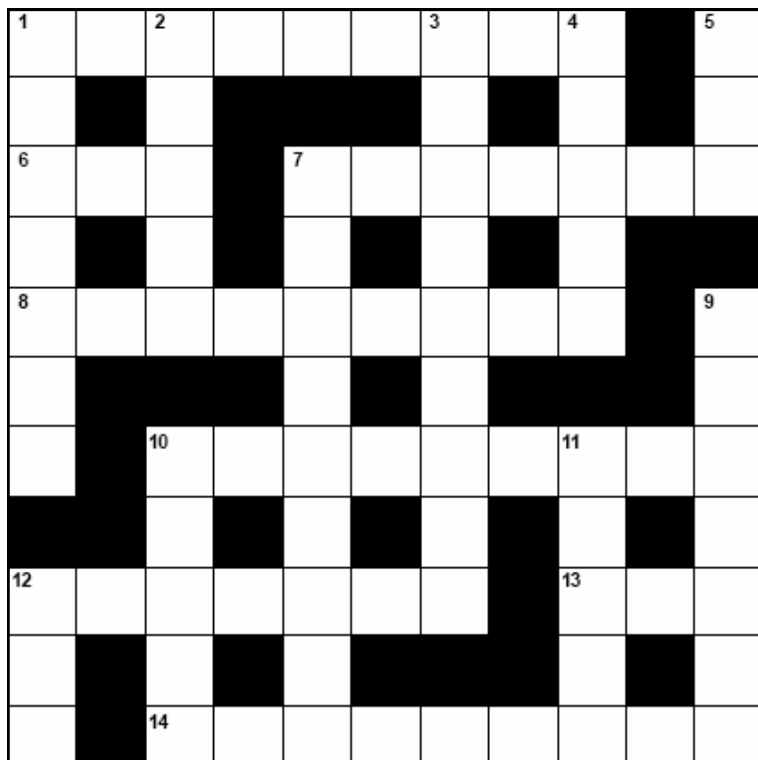
Bendigo Bank

Terms and conditions, fees, charges and lending criteria apply. All information including interest rate is subject to change without notice. Full details available on application. Credit provided by Bendigo and Adelaide Bank Limited ABN 11 068 049 178 Australian Credit Licence 237879. (1676246-1704262) OUT_15944510, 12/04/2022

THE PUZZLE PAGE

THIS WEEK'S CROSSWORD No 24.2022 By Rob Gaspari

ALL ANSWERS ON PAGE 7



Across Clues

- 1) Aide [9]
- 6) Item of headwear [3]
- 7) Knocking lightly [7]
- 8) Make normal [9]
- 10) Australian tree [9]
- 12) England [7]
- 13) Poem [3]
- 14) Wordsworth, Coleridge, and Southey (4.5) [9]

Down Clues

- 1) Climbs [7]
- 2) Stupor [5]
- 3) Frog or toad [9]
- 4) On two occasions [5]
- 5) To clothe [3]
- 7) Brand symbol [9]
- 9) Loom workers [7]
- 10) Grate [5]
- 11) Slack [5]
- 12) Headache powder (Brand name) [3]



WORD SEARCH

THIS WEEKS SUDOKU

		9	1		4	6		
8				6				5
	5		7		8		9	
2		1				5		9
	8						2	
3		7				8		1
	4		5		2		3	
6				1				8
		5	3		6	7		

Disney Characters

W	A	L	L	E	D	A	I	S	Y	D	U	C	K
S	D	O	N	A	L	D	D	U	C	K	Y	R	N
C	U	B	A	O	T	U	L	P	A	I	E	Y	T
R	O	U	I	G	O	O	F	Y	M	K	E	B	A
O	D	A	G	E	N	I	E	B	A	L	O	O	C
O	E	S	U	O	M	Y	E	K	C	I	M	C	E
G	L	B	O	L	T	I	L	G	W	O	M	C	R
E	T	U	M	D	Y	T	B	A	M	B	I	O	I
M	M	S	D	C	D	D	H	A	N	E	M	O	H
C	C	D	A	U	Y	A	O	U	R	K	A	M	S
D	H	U	L	I	M	Y	L	O	M	I	W	R	E
U	A	I	A	A	M	B	U	E	W	P	E	O	H
C	B	I	P	A	E	K	O	W	O	C	E	L	C
K	E	S	U	O	M	E	I	N	N	I	M	R	A

- NEMO
- GOOBY
- CHIP
- DAISY DUCK
- BOLT
- MICKEY MOUSE
- PLUTO
- BALOO
- THUMPER
- DONALD DUCK
- MINNIE MOUSE
- CHESHIRE CAT
- SCROOGE MCDUCK
- WALL-E
- WOODY
- DALE
- DUMBO
- BAMBI
- MOWGLI
- ARIEL
- GENIE
- ABU

Play this puzzle online at : <https://thewordsearch.com/puzzle/1317/>

SPORT & WEATHER



SWANSEA GOLF CLUB RESULTS

LADIES MID-WEEK - STROKE/ECLECTIC

WEDNESDAY 8TH JUNE 2022

9 Holers: Jen Whittaker - 32

Runner-Up: Jane Cotton - 36

18 Holers: Lyn Lyne - 27.5

Runners-Up: Di Sinclair/Val Kemp - 29

Nearest the Pins:

9 Holers: 4th- Dot Morey 7th- Dot Morey

18 Holers: 3rd/12th- Di Sinclair 5th/14th - Alison Smith

Gobblers: Lyn Lyne, Di Sinclair, Sally Siepen x 2

CHICKEN RUNS

WEDNESDAY 8TH JUNE

Winners: Alvin Douglas - 26 Rick Dance - 29 Putts: Rick Dance - 10

FRIDAY 10TH JUNE

Winner: Curt Nicholls - 33 Putts: Rohan Barwick - 14

*******HOLE-IN-ONE ON 7TH**

- ROHAN BARWICK*****

LADIES MIDWEEK - WEDNESDAY 15TH JUNE 2022

ALISON DONALDSON TROPHY - STABLEFORD

9 Holers: Pip Cardno - 20 Pts C/b

Runner-Up: Jen Whittaker - 20 Pts

18 Holers: Di Sinclair - 38 Pts

Runner-Up: Sally Siepen - 35 Pts

Nearest the Pins:

9 Holers: 4th- Jen Whittaker 7th- Pip Cardno

18 Holers: 3rd/12th- Joanna Whelan 8th/17th- Sally Siepen

Gobblers: Pip Cardno, Jen Whittaker Birdie: Alison Smith

CHICKEN RUNS

WEDNESDAY 15TH JUNE

Winners: Colin Walters - 26.5 Barry Skeggs - 29 Derek Ring - 30 C/b

Putts: Barry Skeggs - 12

FRIDAY 17TH JUNE

Winners: Jen Whittaker - 24.5 Pip Cardno - 29.5

Putts: Rick Dance -11 Jason Kerrison -11

CRAFT GROUP SPONSORED DAY – STABLEFORD

SATURDAY 18TH JUNE 2022 - Winner: Gavin Todd - 41 Pts

Runner-Up: Peter Dodge - 37 pts

Nearest the Pins: 4th/13th- Derek Ring (0-17) Max Hall - (18+) 6th/15th- Peter Lea 7th/16th – Chris Weeding

Results supplied by Kathy Dance (sec)

The 5-Day Glamorgan-Spring Bay Weather Forecast from Bureau of Meteorology

Bicheno

Tue. 21 Jun	Wed. 22 Jun	Thu. 23 Jun	Fri. 24 Jun	Sat. 25 Jun
Shower or two.	Partly cloudy.	Possible shower.	Shower or two.	Partly cloudy.
15 °C	16 °C	17 °C	15 °C	14 °C
10 °C	7 °C	8 °C	11 °C	7 °C

Orford/Triabunna

Tue. 21 Jun	Wed. 22 Jun	Thu. 23 Jun	Fri. 24 Jun	Sat. 25 Jun
Shower or two.	Partly cloudy.	Possible shower.	Shower or two.	Partly cloudy.
14 °C	14 °C	15 °C	14 °C	13 °C
9 °C	6 °C	8 °C	9 °C	6 °C

Coles Bay

Tue. 21 Jun	Wed. 22 Jun	Thu. 23 Jun	Fri. 24 Jun	Sat. 25 Jun
Shower or two.	Partly cloudy.	Possible shower.	Shower or two.	Partly cloudy.
14 °C	15 °C	16 °C	15 °C	13 °C
10 °C	8 °C	9 °C	10 °C	7 °C

Swansea

Tue. 21 Jun	Wed. 22 Jun	Thu. 23 Jun	Fri. 24 Jun	Sat. 25 Jun
Shower or two.	Partly cloudy.	Possible shower.	Shower or two.	Partly cloudy.
15 °C	15 °C	16 °C	15 °C	13 °C
9 °C	6 °C	8 °C	9 °C	5 °C