

2024 GREAT OYSTER BAY Community News

FREE

TUESDAY 20TH FEBRUARY 2024

ISSUE 07.2024

TASMAN HIGHWAY CORRIDOR STRATEGY PROJECT INTRODUCTION

The Department of State Growth is developing a corridor strategy for the Tasman Highway between Sorell and Launceston which extends along Tasmania's east coast.

The strategy will identify opportunities for improvement to meet the expected future needs of road users and communities along the corridor. The strategy may include the identification of safety issues, active and public transport opportunities and investment opportunities. Works and upgrades do not form part of this strategy, however the feedback will assist the department to prioritise projects and seek funding.

Due to the length of the corridor from Sorell to Launceston, the project team has split the corridor up into three segments to assist the community in providing feedback on the areas they're interested in. The segments include: (1) South (Sorell to Orford), (2) Central (Orford to St Helens) and (3) North (St Helens to Launceston). Please refer to the map at page 2.

Recent projects and engagement

Recent projects in the area include the Great Eastern Drive upgrades, Diana's Basin to St Helens Point Road upgrades, Dorset Roads Package upgrades and the Sideling upgrades. These projects have all had their own opportunities for community feedback.

This strategy will build on these recent projects as well as previous and ongoing engagement with stakeholders from these projects. The engagement for this corridor strategy invites stakeholders to make further submissions to strengthen ideas for improvement along the corridor.

Public consultation

The project team will be engaging with community, visitors, industry and government along the corridor from late February to early April 2024. We will be in touch again in late February 2024 to provide you with the details of the engagement activities and how you can be involved.

Further information

If you have any questions, please contact Connie Steers, Senior Stakeholder Engagement Consultant or Christa Capel, Stakeholder Engagement Consultant on (03) 6165 0443 or at sorelltolanceston@stategrowth.tas.gov.au.



SUPPORTING ONE OF TASMANIA'S MOST LOVED PAST TIMES.

By Liberal Member for Lyons, Guy Barnett

Recreational fishing in Tasmania is a way of life. Generations of Tasmanians have taken to our waterways to feed their family while experiencing the rugged beauty of Tasmania's coastline.

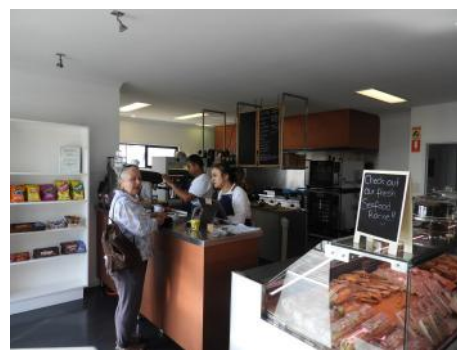
I am an avid angler myself, taking incredible delight in the patient competition and time spent outdoors that only fishing can bring. We all know someone or take part in it ourselves, and as a Government, this is a way of life that we want to preserve for Tasmanians now and into the future.

The Rockliff Liberal Government recently announced the next round of funding for the Better Fishing Grants. This latest round provides grants of up to \$150,000 for facilities to improve recreational marine fishing opportunities in Tasmania.

These grants in the past have been put to various uses and if readers have an idea big or small, inside or outside of the box, please put it forward. We want to know about anything that could potentially make the Tasmanian recreational fishing experience more enjoyable, accessible, environmentally friendly or active.

These grants have already delivered regional weather monitoring equipment and a new fishing pontoon for the Mussleroe community, so nothing is off the table.

These latest grants open 23 February – for more information please visit: <https://fishing.tas.gov.au/get-involved/grants/better-fishing-grants>.



Alimento service area (above) & eatery (below)



ALIMENTO STILL A WORK IN PROGRESS

Alimento a grocery/eatery style store opened recently in Swansea.

The closure of Swansea Corner Store opened a need for new grocery store and Alimento was hoped would fulfil that need.

The premise has various take away items such as premade sandwiches and rolls. The coffee is very good and worth a try along with items from the available sit down menu.

The advertised grocery lines are very limited and in some cases unavailable at the moment.

Local residents are currently using Morris's IGA store for their needs, and this has caused major concerns as congestion both inside and outside the store is occurring.

Morris's continues to operate with new opening hours, increased staff in an effort to satisfy the needs of customers. The hope is that as regular customers adjust to the situation the current shortages and congestion will subside.

As for Alimento local patronage will depend on its ability to provide the services and items it originally advertised.

Robert Gaspari

OPENING TIMES**SWANSEA ONLINE
ACCESS CENTRE Inc.**

swansea.oac@decyp.tas.gov.au

**GREAT OYSTER BAY
COMMUNITY NEWS**

gobcnews@gmail.com

Franklin St. Swansea (in library)

Phone: 0424 425 908

OPEN 10am - 3pm MON - FRI
CLOSED WEEKENDS
& PUBLIC HOLIDAYS**SWANSEA LIBRARY**

Franklin St. Swansea

(at Primary School)

Phone: 6257 8607

OPEN TUESDAY & THURSDAY**9.30 am-12.30pm 1.15pm-4.15pm**

CLOSED ALL OTHER DAYS

+ PUBLIC HOLIDAYS

BICHENO LIBRARY

78 Burgess Street (at Town Hall)

Phone: 6387 5609

OPEN TUES & THURS 10am - 2pm**WED 10am - 4pm SAT 10am - 12noon**

CLOSED

FRIDAY/SUNDAY/MONDAY

+PUBLIC HOLIDAYS

ORFORD LIBRARY

30A Charles Street

Phone: 6123 4039

OPEN**TUESDAY 10.00am-1.00pm 2.00pm-4.30pm****WEDNESDAY 10.00am-2.00pm****FRIDAY 10.00am-1.00pm 2.00pm-6.00pm**

CLOSED ALL OTHER DAYS

+ PUBLIC HOLIDAYS

OPENING TIMES**SPRING BAY ONLINE****ACCESS CENTRE Inc.**

Vicary & Melbourne Street

Triabunna, Tasmania 7190

Phone: 0472 511 136

springbay.oac@decyp.tas.gov.au

OPEN 9:30am - 1.00pm MON - THURS

CLOSED WEEKENDS

& PUBLIC HOLIDAYS

SWANSEA RE-USE SHOPPE

4 Arnol Street

OPEN 10am - 2pm TUES TO THUR**11am - 2pm SATURDAY**

CLOSED MONDAY, FRIDAY & SUNDAY

Enquiries 0461 491 911 during opening hours

SWANSEA COMMUNITY & MEN'S SHED**OPEN TUESDAY - FRIDAY 10am****TO EARLY AFTERNOON**

Contact Colin Stevenson for details

0400 030 746

POP UP BOOK STALL (PUBS)**February: open 10.30am - 3pm daily****March: open 10.30am - 3pm Wed - Sunday****+ public holidays (closed Good Friday)**

Vicary St. Triabunna.

Chris 0458560753; Beth 0407571181;

Judy 62571262 or 0438571262

www.facebook.com/PopUpBookStall; email

popupbookstall@hotmail.com**SWANSEA OP-SHOP**

Franklin St. Swansea

OPEN MON - WED + FRI - SAT 10am - 2pm

CLOSED SUNDAY & THURSDAY

Anglican Parish of East Coast

ptasrh@ths.tas.gov.au

OPENING TIMES**SWANSEA RSL SUB - BRANCH INC.****BAR OPEN**

Mon - Tue 3pm - 7pm

Wed - Thur 3pm - 9pm

Fri 3pm - 10pm. Sat 11am - 10pm.

Sun 12 noon - 6.30pm

BISTRO OPEN

Wed - Sat 5.30pm - 8.00pm

Sun 12 noon - 2.00pm

To make a booking please call

(03) 6257 8188**SWANSEA GENERAL PRACTICE**

May Shaw, Wellington St. Swansea

OPEN MONDAY - FRIDAY**9.00am - 1.00pm 2.00pm - 5.00pm**For an appointment phone **6257 8205****EAST COAST HERITAGE MUSEUM**

22 Franklin Street, Swansea

OPEN 10am - 4pm MON - FRI

CLOSED GOOD FRIDAY &

CHRISTMAS DAY

www.eastcoastheritage.org.au**SWANSEA LPO & NEWSAGENCY**

2/1 Victoria Street

Phone: 03 6117 0000

OPENING HOURS**MON - FRI 8:00am - 5:30pm****Sat - 8:00am - 12:00pm**

When the flag is out, we are open so come on in

BICHENO LPO

1/39 Foster Street

Phone: 03 6389 8014

OPENING HOURS**Mon - Fri 10:00am - 4:00pm****Sat - 9:00am - 12:00pm**

When the flag is out, We are open so come on in

IMPORTANTPLEASE KEEP ALL YOUR COMMUNITY NOTICES UP TO DATE BY CONTACTING US ON PHONE: 0424 425 908 OR EMAIL: gobcnews@gmail.com**GREAT OYSTER BAY COMMUNITY NEWS TEAM**

The current Swansea Online Access Centre volunteers and our coordinator

Advertising, Stories & Copy Deadline: STRICTLY 12 NOON FRIDAY

The Great Oyster Bay Community News is printed on Mondays/Tuesdays.

Please ensure your ads/stories, etc. are in early to meet your advertising deadline times.

Advertisements costing **\$20 or less MUST BE PAID IN CASH** at the Swansea Online Centre prior to publication

Please provide adverts in PDF, JPG or Word format. Articles, letters and photographs of events are most welcome!

Phone: 0424 425 908 Post: PO Box 308 Swansea 7190 Email: gobcnews@gmail.com Website: www.gobcnews.weebly.comFacebook: www.facebook.com/greatoysterbaycommunitynews

Printed at the Swansea Online Access Centre Inc., Swansea, Tasmania

Opening Hours: Monday to Friday 10am-3pm (Unless otherwise noted)

Closed Sat & Sun + Public Holidays

Franklin Street, Swansea (in the Library).

LETTERS to THE GOBCNews TEAM (editor)Please address your letters to the editorial team and please keep it under 200 words, and email to gobcnews@gmail.com. Letters to the editor must comply with our editorial policy, see disclaimer below and will be published if space is available. **Un-authored letters will not be published.****COPYRIGHT ©**

The Great Oyster Bay Community News is subject to copyright and may only be reproduced for personal use. It may not be reproduced in full or in part for redistribution, sale or any other use without permission of The Great Oyster Bay Community News.

THE GREAT OYSTER BAY COMMUNITY NEWS is a weekly newsletter containing articles of interest, community notices and advertising relevant to the Glamorgan Spring Bay Municipality. Advertising revenue is used to finance the printing of 600+ Newsletters, 50 weeks of the year.

The Great Oyster Bay Community News is distributed to all major towns of the municipality weekly, free of charge to our readers.

The GOBCNews team

Disclaimer: The Great Oyster Bay Community News reserves the right to print any material which is designed to benefit or be of interest to the local community. Consequently, all views or opinions expressed in material published are solely those of the writer of that material and do not necessarily reflect the view or opinions of any persons associated with Great Oyster Bay. Community News, the Swansea Online Access Centre or Libraries Tasmania. The Great Oyster Bay Community News also reserves the right to edit or refuse to publish any material, that also may be deemed damaging, misleading or detrimental to our organisation or community or any person. Please refer to our Editorial and Advertising policies which are located on our website: www.gobcnews.weebly.com

OPENING TIMES**MORRIS SUPERMARKET**As of Monday 05th FEB.**NEW OPENING HOURS**7am - 7pm MONDAY - FRIDAY
8am - 7pm Saturday & Sunday**THE BRANCH**7 Maria Street, Swansea
Wine. Tapas. Cocktails. Coffee
OPEN FRI -TUE 1pm until Late
www.thebranchswansea.com.au
Ph 6117 0002**CHURCH NOTICES****EAST COAST ANGLICAN**Please join us for church every Sunday
10am Swansea (10 Noyes St)
4pm Triabunna (1 Franklin St)
Woodsdale (2265 Woodsdale rd)
6257 3321
www.eastcoastanglican.church**ST. ANDREWS UNITING CHURCH
SWANSEA**will be holding services on the 1st & 3rd
Sundays of each month at 10am.
Everyone is invited to attend.
All Welcome**LUNCH WITH MATES**All welcome. Good tucker, good people
A free cooked meal to enjoy with others
EVERY WEDNESDAY, 12PM,
TRIABUNNA RSL
REOPENS 21ST FEBRUARY**CLUBS & GROUPS****THE SWANSEA HOPE CLUB
CUPPA & CHAT GROUP**2nd & 4th Monday of each month from 2pm
@ the Community Hub, 4 Arnol St Swansea
Enquires contact Steve, Linda
0458 959 820**LONELINESS GROUP**LET'S GET TOGETHER & TALK ABOUT IT.
Hi my name is Kath, and I am organising
both a ladies group and a gents group to talk
about loneliness & isolation. If interested
please text leaving your interest so a time &
date can be organized.**KATH 0468 998 546 (TEXT ONLY)***These groups is not a replacement for your
mental health worker or your GP.***SPARKLERS DANCE TROUPE**

Classes on Monday

Classes resume Monday 4th Mar. at Town
Hall. Juniors at 4.30pm. Seniors at 6pm.
Enquires call **Janelle 0437 264 332****SPRING BAY POTTERS**The Spring Bay Potters Group at
The Village in Triabunna,
Wed & Fri 10.00am - 1.00pm
As well as tuition, clay, tools, glazes etc.
are provided for a cost.**CLUBS & GROUPS****GLAMORGAN SPRING BAY
HISTORICAL SOCIETY INC.**Are you interested in local History?
Consider joining the Historical Society.
TUESDAYS 10AM TO 4PM
22 Franklin Street, Swansea
info@glamorganhistory.org.au
Phone: 03 6257 9011**DOLPHIN SANDS COMMUNITY
ASSOC. (DSCA)**Email: dsca.7190@gmail.com
Website: dscommunity.org.au
Mail: PO Box 133, Swansea, 7190**SWANSEA BRANCH CWA**Meets on the 2nd Wednesday of the month
Anglican Church Hall Cnr Noyes &
Wellington St. Swansea
NEW MEMBERS ALWAYS WELCOME!
Contact **Linda 0409359208** for details.**SWANSEA MEN'S PROBUS CLUB**Meeting starts 10am, guest speaker 11am,
usually followed by BBQ
every 2nd Tuesday of the month
at Swansea Golf Club**MAHJONG & SCRABBLE**1.30 pm every Monday
at Swansea Golf Club.
Contact **Lyn Lyne 0438 578 208****GKR KARATE**Karate classes on Thursday at the
Triabunna District School.
Class starts at 12 noon.
For details contact Nathan Jacobs
0482 471 443**SWANSEA MODEL YACHT CLUB INC.**Sailing, weather permitting,
Monday 10.30am until 2.30pm.
All interested parties & spectators welcome.
Sailing on Kelvedon Dam south of Swansea.
Inquiries Cheryl 0419393774**ORFORD DF65 RADIO
SAILING GROUP**The above group meets from time to time in
the Orford area to sail popular DF65 and
other radio-controlled model yachts. If you
are interested in racing or just sailing around
Contact **David 040 751 8171****SWANSEA SPLASHERS**The Splashers meet most days @ 8am/9am
Gordon Street boat ramp for a swim/splash.
New splashers always welcome.
For details contact **0408 971 483****QIGONG**Swansea Golf Club
Monday 10am Enquiries: **0448 649 765****CRANBROOK CRAFT GROUP**Every Wednesday 10.30 am
at Cranbrook Hall. Cranbrook.
Contact **Edith 0409 216 793****CLUBS & GROUPS****THE ORFORD & DISTRICT RIDING
CLUB INC.**The last weekend of every month between
10.00am - 3.00pm
57 Inkerman Street Triabunna
For info. Phone: **042 779 6096**
E-mail: sandmgraham@bigpond.com**SWANSEA TENNIS CLUB**Available for hire.
Contact **Kathy Dance**
0439 732 496.
All new members welcome.**PICKLEBALL**You just want a social, non competitive
game? Sunday times may vary
Swansea School Hall
Contact **Alison 0438 951 281****SWANSEA BOWLS CLUB**Thursday Social Bowls
starts 1.00pm for 1.30 Roll Up.
All welcome. No equipment required.
For more details contact **Mick 0417064571****FREYCINET VOLUNTEER
MARINE RESCUE**Meets 7pm, 3rd Tuesday each Month
VMR Boatshed, 76A Maria Street, Swansea
Visitors and new members welcome
Enquiries: **0400 329 973****SPRING BAY WALKERS**Every Thursday morning,
contact **Peter Hutememier 6257 7506.**
www.triabunnnavillage.com.au/springbay-walkers**MISCELLANEOUS****COMMUNITY TRANSPORT SERVICES
TAS. (CTST)**Door-to-door community transport to
Support eligible clients maintain their inde-
pendence. Ph1800781033 www.ctst.org.au**THE VILLAGE****20 Melbourne Street, Triabunna**
Community Market 3rd Sunday of each
Month 10.00am to 1.00pm.
Large range of stalls and activities. Sell from
your car boot, charge applies. For details:
<http://triabunnnavillage.com.au/>**ADVOCACY SERVICES****SWANSEA RSL SUB-BRANCH Inc.**
Until further notice the contact person for
Advocacy Services will be
Garry Bevan on 0435 861 201.
Available for appointments in Swansea**SWANSEA COMMUNITY ROOM**with kitchen facilities.
Available for hire
Contact **Celia Ralston**
0432 415 516**IMPORTANT**

PLEASE KEEP ALL YOUR COMMUNITY NOTICES UP TO DATE BY CONTACTING US ON

PHONE: **0424 425 908** OR EMAIL: GOBCNEWS@GMAIL.COMOnline in colour every week at www.gobcnews.weebly.com

ADVERTISEMENT

Brian Mitchell MP

Your Federal Member for Lyons



For assistance with all federal matters, please contact me on (03) 6263 3721 or email me at Brian.Mitchell.MP@aph.gov.au

Works Hard. Gets Results!

Authorised by Brian Mitchell MP (ALP, Tas) 28 Green Point Road Bridgewater TAS 7030

COMMUNITY NOTICE



ARE YOU ABLE TO VOLUNTEER?

Swansea Online Access Centre are seeking suitable volunteers to fill shifts at the centre.

Full training will be given to the successful applicants.

The hours worked are suitable for Centrelink Volunteering purposes and count towards mutual obligation requirements.

Please contact Bill Fry, Coordinator, on 0424 425 908 and leave a message or email swansea.oac@decyp.tas.gov.au

COMMUNITY NOTICE

SWANSEA ONLINE ACCESS CENTRE CHANGE TO OPENING HOURS

Until further notice the centre will be closed on Tuesdays, but computer access will still be available on Tuesdays through the library. Sorry for the inconvenience.

Rob Gaspari SOAC Secretary



FOR SALE



LOCAL BUSH HONEY
11 SHAW STREET
SWANSEA

WANTED TO RENT

Small house, cabin or shack
Must be rural & isolated ie no other houses & barking dogs within 500m
Wanted by local handyman with excellent references
0492 209 762

CAR, BIKE & TRUCK SHOW

Easter Saturday 30th March 2024
Non-Food Market Stall-holders Needed
Please contact Jo 0419 949 371

CAR, BIKE & TRUCK SHOW

Easter Saturday 30th March 2024
We require volunteers to help set up at 7 am and pull down after the event's completion at 2pm.
If you can help, please contact Jo 0419 949 371

HAVE YOUR SAY

On The Final Report Of the "Future of Local Govt. Review East Coast & South-East Coast"

<http://engage.futurelocal.tas.gov.au>

Make a submission for the report & electronic Submission.

or

Mail to
Local Government Reform
GPO Box 123
Hobart Tas 7001.

Email lg.consultation@dpac.tas.gov.au

Submissions close on 29th February 2024

Clr Kenneth Gregson

ARNOL PROJECTS

CONTAINER CABINS -
OUR DESIGN OR YOURS



Dale Arnol - 0417 332 988

arnolprojects@bigpond.com

Phone/fax: 6257 8288

41 Maria Street, Swansea.

- Mobile welding
- Aluminium-stainless steel
- Structural & general engineering
- Stainless wire handrails
- Building decks & sheds
- Trailer, machinery repairs
- Wood heater repairs
- Steel sold, cut to length

Qualified trade persons
NO JOB TOO BIG OR SMALL
ABN 74 648 177 056

Safeguarding Children and Young People Mandatory Training

Important information for anyone wishing to volunteer in our school. Please email your completed certificate to info@ecap.tas.gov.au along with your working with vulnerable people card. Please see the link below for WWWV. Apply for registration to work with vulnerable people: www.volunteering.tas.gov.au

YOUR SAFEGUARDING TRAINING IS READY!

If you are a:
- Director/manager,
- Volunteer, or
- Service provider
you must complete your training before re-starting work with children or young people this year.

Log on to www.volunteering.tas.gov.au to find out more about the training. Make sure you are fully up to date to prevent this from stopping. It is essential for working with vulnerable people.

START YOUR TRAINING HERE →



COLOUR ISSUES FOR 2024

Issue 01 January 09

Issue 13 April 02

Issue 26 July 02

Issue 39 October 01

Issue 50 December 17

COPY DEADLINE for ADVERTISING, STORIES, etc. STRICTLY 12 NOON FRIDAYS

except by special arrangement

Pugwash Pet Spa



All Pets Welcome
 Located at Swansea Holiday Park, 2 Bridge St, Swansea

Hours : 9:00AM—5:00PM Daily
Collect key and Tokens from office:
Tokens ONLY—Minimum Purchase \$10.00

ROBERTS INSURANCE PROVIDERS




Contact us today for a quote!
 Household - Farm & Rural - Business - Public Liability
 workers Compensation & More
Cambridge & Swansea
 P: 0409 877 244
 admin@robertsinsurance.com.au
 www.robertsinsuranceproviders.com.au

Servicing Swansea 2nd & 4th Friday each month 11-2.00pm

No appointment required!

Roberts Insurance Providers Pty Ltd is a Corporate Authorised Representative of Resilium Insurance Broking Pty Ltd ABN 9216997573 AFSL No. 460382



Your Voice Matters: Glamorgan Spring Bay Public Toilet Strategy Survey Now Open!


Exciting news! Glamorgan Spring Bay is taking steps to enhance our public toilet facilities, and we need your input. Our Public Toilet Strategy Survey is now live, and we invite you to be a part of this transformative process.

Why Your Participation is Crucial:
 Public toilets are integral to our community and tourism experience, and your insights will shape the future design, maintenance, and functionality of these facilities. The survey aims to address current and future demands, ensuring our public spaces meet community expectations.

How to Participate:
 Scan the QR code visit the Glamorgan Spring Bay Council website to share your thoughts. Hard copies are available upon request.

Your contribution will make a significant impact on the vibrancy and accessibility of our community spaces. Let's work together to create facilities that truly reflect the needs and preferences of our diverse community.

This survey will close on 17 March 2024.
 Thank you for being a part of this exciting journey!



Greg Ingham
GENERAL MANAGER

SWANSEA CHAMBER OF COMMERCE & TOURISM
 IN CONJUNCTION WITH SWANSEA LOCAL EVENTS COMITY
 PRESENTS

SWANSEA CAR, BIKE & TRUCK SHOW

Free Entry



EASTER SATURDAY 30TH MARCH
 10:00 AM - 2:00 PM
 SWANSEA FOOTBALL GROUND
 ENTRY VIA WELLINGTON STREET

Family Fun Day

FOOD, MARKETS, LIVE ENTERTAINMENT, KIDS ENTERTAINMENT, RAFFLES, EASTER BUNNY & HEAPS MORE

ALL ENQUIRES TO CHAMBEROCSWANSEA@GMAIL.COM OR JO.04.19.949.371

The Bark Mill

Mouth watering cakes, delicious pies, flavoursome coffees and local products you can't go wrong at our cafe



Open daily 6am- 4pm

HAVE YOU ANY STORIES OR ARTICLES YOU WANT TO SHARE?
PLEASE SEE OUR WEBSITE FOR DETAILS. WWW.GOBCNEWS.WEBLY.COM

Now open in Sorell!



Island Dental



Dr Girish Sasidharan Dr Giselle Parker Dr Sam Yeoh Dr Joey Wong

Shop 6 / 35-37
Gordon St
Sorell



193- 195
Elizabeth St
Hobart

Contact us!

P 6231 2356
E info@islanddentalhobart.com.au

Book online at islanddentalhobart.com.au
or scan this QR code:



**SWANSEA
PROPERTY
MAINTENANCE**

- Lawn & edging — ride on & mower
- Gardening & pruning
- Small property slashing — All terrain ride on
- Property clean ups
- Window cleaning
- Flu & wood heater cleaning
- Gutter & roof cleaning
- Pressure washing
- Waste removal
- Mini Excavator work 1.7t
- Retaining walls
- Tree trimming
- Window & door repairs
- Shower screen
- Handy man service for all types of repairs

**CALL STUART FOX
0409 435 991**

8 Wedge Street, Swansea TAS 7190 ABN 34161234295

FREE RANGE PORK

Roasts Chops Ribs Belly Mince
Bacon Ham Sausages Chorizo & More

Call Phil 0459 080 201 or
Order Online

LONGNAMEFARM.COM.AU

**ALL HOME
RENOVATIONS,
REPAIRS &
MAINTENANCE**

contact Wayne on
0492 209 762

**The Massage
& Healing Clinic**

Little Swanport

*Rehabilitation • Relaxation • Remedial
Sports • Musculoskeletal Therapy Journey
Practitioner Trained*

John Geeves ATMS Acred. Health rebates avail.

0428 831 359

www.remedialmassagehobart.com

Tim & Lorraine Vincent
Earthmoving & Landscaping

SWANSEA BOBCAT

swanseabobcat89@gmail.com
0427 794 248

89 Gordon St
Swansea 7190

FOR HIRE

- Skid steer bobcat—4 ton
- Excavator & Tipper
- Slashing/clearing/ driveways
- House sites/landscaping
- Laser levelling
- Plumbing/electrical/ drainage
- Post holes

FREE QUOTES

Roberts
real estate

ROBERTS REAL ESTATE

EAST COAST

Wherever you are,
whatever your
property needs,

**Roberts Real Estate
East Coast**

have got you covered.
We're here to help!

PROPERTY MANAGEMENT • PROPERTY SALES



Anastasia Hallam
PROPERTY MANAGEMENT
0447 137 751

Thelma Stephens
ADMINISTRATION
03 6375 1495

Paul Whytcross
PROPERTY SALES CONSULTANT
0428 637 516

Bianca Melling
PROPERTY SALES CONSULTANT
0439 327 270

Roberts Real Estate East Coast
41A Foster Street, Bicheno | 03 6375 1495
robertsre.com.au

THE BEST JOURNEY
always takes us HOME

Roberts
real estate

BRYAN GREEN
 LABOR FOR PROSSER
 Hard working. Experienced. Local.
 0486 016 182
 bryan.green@taslabor.org.au
 Authorised by Rebecca White MP - ALP Tasmania | 30 Oct 2017



SENATOR WENDY ASKEW
 LIBERAL SENATOR FOR TASMANIA



46 Cameron Street, Launceston TAS 7250
 63318501
 senator.askew@aph.gov.au
 SenatorAskew

Authorised by Senator W. Askew, Liberal Party of Australia, 46 Cameron St, Launceston TAS 7250.

Jen Butler MP
 Your hardworking Member for Lyons

jen.butler@parliament.tas.gov.au

7A Wellington Street, Longford
 PO Box 59, Longford TAS 7301
 Ph: 03 6324 2070

Shop 9 Cove Hill Fair, Bridgewater
 PO Box 51, Bridgewater TAS 7030
 Ph: 03 6212 2150



Labor Tasmanian
 Authorised by Jen Butler - 7A Wellington Street, Longford 7301

Guy Barnett
 Liberal Member for Lyons MP
 Listening, Caring, Delivering.



15 High Street, New Norfolk TAS 7140 (03) 6701 2170
 GuyBarnettMP guybarnett@dpac.tas.gov.au
 Authorised by Guy Barnett, 15 High Street, New Norfolk TAS 7140

WHAT NOTICES ARE FREE IN THE GOBCNEWS

- ITEMS FOR THE COMMUNITY NOTICES/CLUBS & GROUPS/ CHURCH NOTICES:** Non - profit organisations & their events, opening times, information, etc. usually ongoing.
- GIVE-A-WAYS:** items that are to be freely given away
- DEATH NOTICES/IN MEMORANDUM**
- THANK YOU/ACKNOWLEDGEMENTS**
- AGM:** Annual General Meetings
- LOST & FOUND:** items lost & items found
- LOCAL SPORTS/RAFFLES:** results etc.
- ARTICLES/GENERAL INFORMATION:**
 - At the discretion of the GOBCNews team
 - The space availability
 - It's relevance to the community
 - It passes our disclaimer policy.

FREE ADVERT POLICY IS SIZE 1 OR 2 FOR 1 TO 2 WEEKS ONLY.
LARGER SIZES AT THE DISCRETION OF THE GOBCNEWS DESKTOP PUBLISHER & SPACE AVAILABILITY .

FOR MORE INFORMATION CONTACT OR LEAVE A MESSAGE FOR THE GOBCNEWS TEAM.
Email: gobicnews@gmail.com
Phone: 0424 425 908

GREAT OYSTER BAY COMMUNITY NEWS RATES

SIZE	Price per single issue	
	NPClubs & Personal	Business
1 (6x3cm)	\$6	\$7.50
2 (6x6cm)	\$12	\$15
3 (6x9cm)	\$18	\$22
4 (6x12cm)	\$24	\$30
1/4 page	\$36	\$45
1/3 page	\$48	\$62
1/2 page	\$66	\$86
Full page	\$102	\$112

Discounts apply on multiple issues

Insects-R-Gon
PEST CONTROL


Safe and Effective Treatments for all of your Pest Problems

Chris Green & Craig Andrews



Licensed, Insured & Reliable
6243 9865, 0432 210 004
 www.insectsrگون.com.au
 email: insectsrگون1@gmail.com

DOWN AND BACK Deliveries




Delivering from Hobart to Swansea & everywhere inbetween

Call Andrew Moore
0457 711 108
 downandbackdeliveries@yahoo.com.au

DO YOU NEED PHOTOCOPYING

Large print runs at very reasonable prices. B&W or colour, A4/A3 size. Standard or in booklet form. We can also print/scan/email your important documents. Discounts for SOAC members

SWANSEA ONLINE ACCESS CENTRE INC.



Franklin Street, Swansea, 7190.
 Next to the Library
 Phone: 0424 425 908
 Email: gobicnews@gmail.com

PUZZLED PAGE

S	P	A	G	H	E	T	T	I	E	
P	A	T	E		T	O	I	L	E	D
E	G	A	L		A	R	R	I	D	E
C	I	G	A	R		T	A	U	N	T
K	N	O	T		G	E	M	M	A	E
G	O	C	U	L	I					R
D	Q		I	L	L	S	A	G		
E	M	U		A	L	I	U	N	D	E
B	O	R	Z	O		I				O
U	T	A	H		S	C	U	L	P	T
G	O	N	O	P	H		R			T

ASTCOAST TREE SURGEON

• ALL ASPECTS OF TREE WORK
 • COUNCIL APPROVED

CALL: HUGH WILSON 0431 755 300

This weeks **PUZZLED PAGE** answers
NO CHEATING NOW!



Coastal Solar

AND ELECTRICAL TAS

Living locally and
servicing the East Coast
for more than a decade.

Reducing your everyday
electrical costs.

*“An investment
in knowledge
always pays the
best interest”*

— Benjamin Franklin

SERVICES OFFERED:

- Residential & Commercial
- New Builds, Renovations & Rewires
- Expert in Solar Installations & Repairs
- Off Grid Solar-Batteries
- Accredited Designer & Installer of Grid Connect PV Systems with Batteries up to 100kW
- Switchboard Upgrades
- Installations of Air Conditioners up to 18kW, Radiant Heaters, Fans
- Installation of Heat Pump Hot Water Systems
- Data & Cabling Systems
- TV Antennae Installs & Repairs
- Safety Inspections

Call Andrew 0458 728 893

www.coastalsolartas.com.au

Lic: 1300920



Lic: A7535633



Lic: L143892

THE PUZZLED PAGE

THIS WEEK'S CROSSWORD® No 07.24 By Rob Gaspari

ALL ANSWERS ON PAGE 7



1	2	3	4		5	6	7	8		
9					10				11	12
13					14					
15						16				
17						18				
			19	20						
21		22		23					24	
25	26			27				28		
29			30					31		
32				33		34				
35									36	

ACROSS

- 1. A long, thin, solid, cylindrical pasta (9)
- 9. A rich, savoury paste made from finely minced or mashed ingredients, typically seasoned meat or fish (4)
- 10. Worked extremely hard or incessantly (6)
- 13. Equal; impartial (4)
- 14. To smile or laugh at (6)
- 15. A cylinder of tobacco rolled in tobacco leaves for smoking (5)
- 16. A remark made in order to anger, wound, or provoke someone (5)
- 17. A fastening made by looping a piece of string, rope, or something similar on itself and tightening it (4)
- 18. A small asexual reproductive structure in liverworts, mosses, etc, that becomes detached from the parent and develops into a new individual (6)
- 19. Circular or oval windows; circular openings at the top of a dome (5)
- 23. Woes; misfortunes; troubles (4)
- 24. Element Silver (2)
- 25. Flightless bird (3)
- 27. Not part of or derivable from the document or instrument itself (in law) (7)
- 29. A large Russian wolfhound of a breed with a narrow head and silky, typically white, coat (6)
- 31. Is an atom or molecule with a net electrical charge (3)
- 32. A state in the western US; capital, Salt Lake City (4)
- 33. Create by shaping stone or wood or any other hard material (6)
- 35. A pickpocket or thief (6)
- 36. Element Tennessee (2)

DOWN

- 1. a type of Italian cured meat, a culinary gem from the South Tyrol region (4)
- 2. calling out the name of a person (especially by a loudspeaker system) (6)
- 3. A Japanese; shrine, mountain, district, WW2 war ship. (5)
- 4. Italian ice cream (6)
- 5. the seventh letter of the Greek alphabet (3)
- 6. a Italian pasta, small and ring-shaped, traditionally stuffed with a mix of meats or cheese. (8)
- 7. an Italian dessert consisting of layers of sponge cake soaked in coffee and brandy or liqueur with powdered chocolate and mascarpone cheese. (8)
- 8. the large broad bone forming the upper part of each half of the pelvis. (5)
- 11. Barry Humphries alter ego (5)
- 12. Surface-active chemicals widely used in industry and laundering (10)
- 18. (7)
- 20. a greeting at meeting or parting (5)
- 21. identify and remove errors from (computer hardware or software) (4)
- 22. Muslim holy book. (5)
- 24. Choose to take up, follow, or use (5)
- 26. a piece of fast-moving instrumental music consisting mainly of notes of equal length (4)
- 28. nothing, especially as the score in certain games; zero (3)
- 30. a Tibetan breed of cattle, developed by crossing the yak with common cattle (3)
- 34. an ancient city of Sumer located on a former channel of the Euphrates River (2)

The 6-Day Glamorgan-Spring Bay Weather Forecast

from Bureau of Meteorology

Bicheno

Tue. 20 Feb	Wed. 21 Feb	Thu. 22 Feb	Fri. 23 Feb	Sat. 24 Feb	Sun. 25 Feb
Late shower or two.	Showers.	Partly cloudy.	Partly cloudy.	Partly cloudy.	Partly cloudy.
22 °C	24 °C	29 °C	23 °C	21 °C	22 °C
15 °C	17 °C	18 °C	15 °C	12 °C	12 °C

Orford/Triabunna

Tue. 20 Feb	Wed. 21 Feb	Thu. 22 Feb	Fri. 23 Feb	Sat. 24 Feb	Sun. 25 Feb
Cloudy.	Shower or two.	Possible shower.	Partly cloudy.	Partly cloudy.	Partly cloudy.
23 °C	24 °C	32 °C	22 °C	21 °C	23 °C
14 °C	16 °C	19 °C	14 °C	12 °C	11 °C

Coles Bay

Tue. 20 Feb	Wed. 21 Feb	Thu. 22 Feb	Fri. 23 Feb	Sat. 24 Feb	Sun. 25 Feb
Late shower or two.	Showers.	Partly cloudy.	Partly cloudy.	Partly cloudy.	Partly cloudy.
23 °C	26 °C	30 °C	25 °C	22 °C	23 °C
15 °C	17 °C	18 °C	15 °C	12 °C	12 °C

Swansea

Tue. 20 Feb	Wed. 21 Feb	Thu. 22 Feb	Fri. 23 Feb	Sat. 24 Feb	Sun. 25 Feb
Possible late shower.	Showers.	Partly cloudy.	Partly cloudy.	Partly cloudy.	Partly cloudy.
23 °C	26 °C	31 °C	24 °C	22 °C	24 °C
13 °C	15 °C	17 °C	13 °C	11 °C	10 °C

LOCAL SPORTS



SWANSEA GOLF CLUB

RESULTS

RESULTS 17TH FEBRUARY 2024 TODAY'S EVENT - STABLEFORD

Overall Winner: Darryn Down 41
Winner Div 1: Tim Bond 39
Runner Up: Jerome Plunket 38 .
Winner Div 2: Steve Kenny 37
Runner Up: Angela Barden 36
Nearest the Pin: 8/17th Steve Kenny 9/18th Chris Whelan
Super Pin: 4/13th Rob Dureau, 7/16th Chris Whelan

NEXT WEEK 4BBB

WEDNESDAY 14th FEBRUARY 2024 LADY'S MID-WEEK STABLEFORD

9-Holers: Dianne Sinclair 20, Phillippa Cardno 15.
Nearest the Pin: 6th Jane Cotton, 4th Pip Cardno.
18-Holers: Patricia Hardcastle 33, Jan Darke 32.
Nearest the Pin: 5th Pat Hardcastle,

CHICKEN RUNS

WEDNESDAY 14th FEBRUARY

Winners: Keith Breheny 26, Colin Walker 28, Steve Kenny 30.
Putts: Alvin Douglas 12.

FRIDAY 16th FEBRUARY.

Winners: Mark Curtin 25.5, Sandy Shaw 25.5, Pete Lingard 27,
 Greg West 28.
Putts: Greg West 12



Results supplied by Paul Nunn



SWANSEA BOWLS CLUB

PENNANT RESULTS

The 14th game of the 2023/24 East Coast Pennant season was played on Sat, 17th February, with an away game against Scamander. In a closely fought game, winning 2 of the 4 rinks, Swansea came away with a slender win and inflicted Scamander's first loss of the season.

Round 14 – Sat, 17th Feb v Scamander

Swansea defeated Scamander: 92-88
Points: Swansea – 10 : Scamander – 4

Next game is against St Marys, at Swansea, on Sat, 24th February.

Barry Hill	lost	Sam Child	20-29
Bill Hodgetts	def	Tony Faulkner	26-15
Michael Dalla-Vecchia	lost	Chris Davern	17-25
Judi Holmes	def	Grant McCormack	29-19

Ladder:

Team	Played	Won	Lost	Drawn	Points
Scamander	14	12	1	1	161
Swansea	14	7	6	1	97
Bicheno	14	5	8	1	84
St Marys	14	2	11	1	50



SWANSEA CRICKET CLUB

RESULTS

Orford defeated Runnymede
Levendale defeated Dodges Ferry

Next week Preliminary Final
 Dodges Ferry v Orford

Thanks to all our sponsors, supporters, volunteers and players for another great season.

Special thanks to our trophy donors

Cowen Construction

HPT Cusick &

G & I Williams

We held our Trophy Presentation Night on Saturday and we would like to thank everyone for making it a wonderful evening.

Congratulations to all our award winners and we look forward to next season.



From back: Todd Bryan (Bowling Ave) Trent Gray (T20 Batting) Rhys Snell (Batting Ave & Cricketer of the Year) Issac Melling (Best U/21) Thomas Bishop (T20 Bowling)
 Front: Jesse Bruce (Best Clubman) Charlie Crisp (Most Dedicated) Liam Quinn (Captains Award)